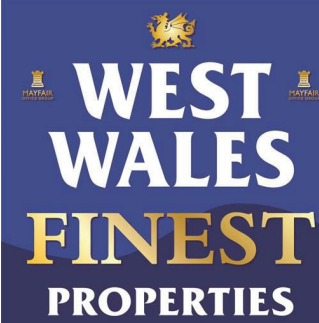




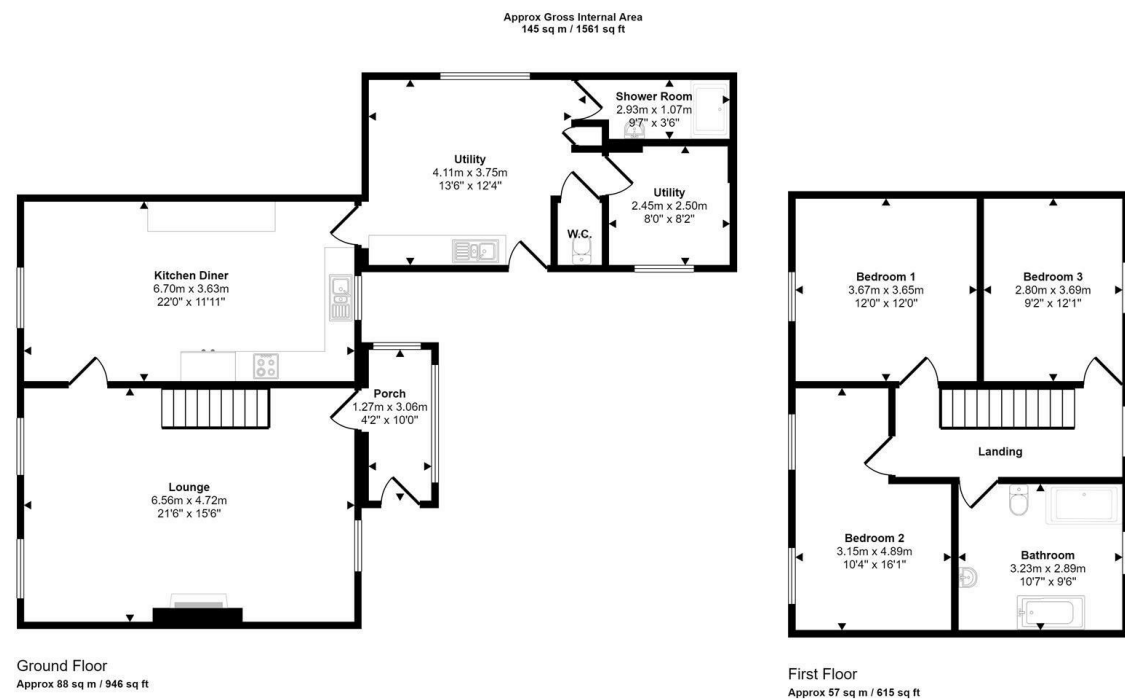
0345 094 3006

finest@westwalesproperties.co.uk

westwalesfinestproperties.co.uk



THE AGENT WITH THE
LONDON CONNECTION



Morfa Amroth, Narberth, Pembrokeshire, SA67 8NF

- Detached House
- Three Double Bedrooms
- Off Road Parking
- Front And Rear Courtyard Gardens
- Successful Holiday Let
- Seafront Location With Amazing Views
- Very Well Presented
- Located In The Centre Of Amroth Village
- No Onward Chain
- EPC Rating: TBC

www.mayfairoffice.co.uk tel: 020 7467 5330

COMPUTER-LINKED
OFFICES THROUGHOUT
WEST WALES



AND ASSOCIATED
MAYFAIR OFFICE IN
LONDON



Offers In The Region Of £590,000

Nat West Chambers, Tudor Square, Tenby, Pembrokeshire, SA70 7AJ

Email: tenby@westwalesproperties.co.uk
Telephone: 01834 845584



We Say...

Welcome to Morfa, a beautifully presented detached home situated just across the road from the golden sands of Amroth Beach, at the start of the breathtaking 186-mile Pembrokeshire Coastal Path.

This charming property offers the ideal combination of modern comfort and coastal charm. Currently operating as a successful holiday let, it also presents a wonderful opportunity as a full-time family residence or a relaxing second home by the sea.

Inside, you'll find a welcoming and comfortable living room with sea views, a separate dining room perfect for family meals or entertaining, a well-appointed kitchen, a convenient utility room which could be utilised as a games/hobby room, a store room and a shower room. Upstairs are three generous double bedrooms and a stylish family bathroom.

The home benefits from oil fired central heating and double glazing throughout. Outside, there's a shared driveway providing off-road parking and courtyard gardens to the front and rear.

Set in the heart of the charming seaside village of Amroth, Morfa is within walking distance of cafés, pubs, and local amenities, with miles of scenic coastal walks right on your doorstep.

This is a rare opportunity to own a slice of Pembrokeshire paradise—ideal for holiday letting, a seaside getaway, or as your forever home.

Location

Wisemans Bridge and Amroth are popular destinations for holidaymakers, with many seasonal shops, beaches, cafe's and public houses on offer, and only a short walk away. The Amroth/Wisemans Bridge area lies on the South Pembrokeshire Coastline and marks the beginning and end of the stunning 186 mile Coast Path Walk around the entire county. There are many popular attractions nearby, including Colby Woodland Gardens and Folly Farm Adventure Park and Zoo.



DIRECTIONS

From our Tenby Office, head out of Tenby towards Pentlepoir, then at the roundabout take the third exit onto the A477, then turn right towards Summerhill. From Summerhill take the left-hand turn down the hill towards Amroth. As you come along the beach front, you will find Morfa on your left hand side, after Smugglers restaurant. What3Words: ///pilots.canoe.create

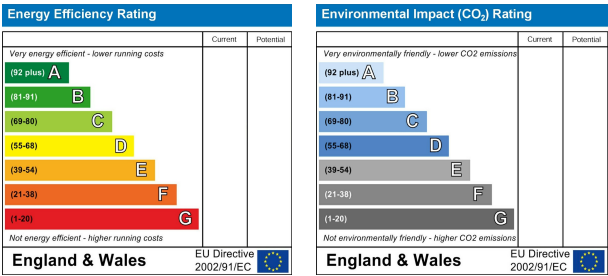
GENERAL INFORMATION

VIEWING: By appointment only via the Agents.
TENURE: Freehold
SERVICES: We have not checked or tested any of the services or appliances at the property.
Property has Mains Electric, Mains Water, Mains drainage
HEATING: Oil
TAX: Band N/A

ADD/ESL/04/25/DRAFT

We would respectfully ask you to call our office before you view this property internally or externally

FACEBOOK & TWITTER
Be sure to follow us on Twitter: @ WWProps
<https://www.facebook.com/westwalesproperties/>



AERIAL VIEW

