



The Dale, Plot 19 Summerhill, New Road, Freystrop, Haverfordwest, Pembrokeshire, SA62 4LQ

- Executive Development
- Two En-Suite Bedrooms
- 5 Bedroom Detached House
- Open Plan Kitchen/Dining/Living Space
- Four Bathrooms
- Driveway and Integral Garage
- Garden to the Rear
- Air Source Heat Pump
- Underfloor Heating
- Reputable Developer

WE WOULD LIKE TO POINT OUT THAT OUR PHOTOGRAPHS ARE TAKEN WITH A DIGITAL CAMERA WITH A WIDE ANGLE LENS. These particulars have been prepared in all good faith to give a fair overall view of the property. If there is any point which is of specific importance to you, please check with us first, particularly if travelling some distance to view the property. We would like to point out that the following items are excluded from the sale of the property: Fitted carpets, curtains and blinds, curtain rods and poles, light fittings, sheds, greenhouses - unless specifically specified in the sales particulars. Nothing in these particulars shall be deemed to be a statement that the property is in good structural condition or otherwise. Services, appliances and equipment referred to in the sales details have not been tested, and no warranty can therefore be given. Purchasers should satisfy themselves on such matters prior to purchase. Any areas, measurements or distances are given as a guide only and are not precise. Room sizes should not be relied upon for carpets and furnishings.

SERVICED PLOTS

AVAILABLE FOR SALE

www.mayfairoffice.co.uk tel: 020 7467 5330

COMPUTER-LINKED
OFFICES THROUGHOUT
WEST WALES



AND ASSOCIATED
MAYFAIR OFFICE IN
LONDON

Offers In Excess Of £575,000

Property House, 12 Victoria Place, Haverfordwest, Pembrokeshire, SA61 2LP

Email: finest@westwalesproperties.co.uk

Telephone: 0345 094 3006



MAYFAIR
OFFICE GROUP

We Say...

"The Dale"- Plot 19 - An opportunity to purchase a 5 bedroom New Build Detached House set on an exclusive development, in the sought after semi-rural area of Freystrop, just 4.5 miles away from Pembrokeshire's County town of Haverfordwest.

Currently under construction, this property will briefly comprise; Entrance hall leading to the main lounge, open plan kitchen/dining living area with french doors leading to the garden and patio, downstairs shower room, and a utility room with door leading through to an integral garage.

On the first floor is a master suite with an en-suite bathroom, another bedroom with an en-suite shower room, and a further two bedrooms. There is also a family bathroom with separate shower and bath.

Externally the property will offer a driveway providing off road parking, garden to the rear which will be mostly laid to lawn with a patio seating area. This property further benefits from underfloor heating throughout the ground floor and an air source heating system. We are informed that the plots will be serviced with mains electric/water and drainage.

The completed property will have the benefit of a Professional Consultants Certificate. These properties are a must view to appreciate.

SPECIFICATION MAY CHANGE FROM ARTISTS IMPRESSION, PLEASE CHECK. IMAGES FOR ILLUSTRATION PURPOSES ONLY.

The estuary village of Hook on the Western Cleddau, has local amenities including shop/post office, primary school and sports club, and gives access to the beautiful scenery of the Cleddau Estuary. The county town of Haverfordwest is approximately 5 miles to the north and enjoys a wide variety of amenities including secondary schools, shops, supermarkets, a college of further education, swimming pool, library, restaurants etc.

Location

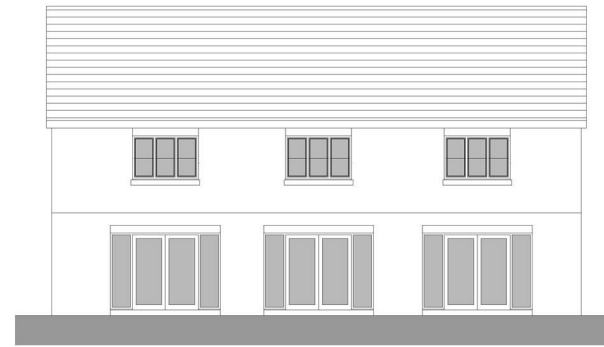
The estuary village of Hook on the Western Cleddau, has local amenities including shop/post office, primary school and sports club, and gives access to the beautiful scenery of the Cleddau Estuary. The county town of Haverfordwest is approximately 5 miles to the north and enjoys a wide variety of amenities including secondary schools, shops, supermarkets, a college of further education, swimming pool, library, restaurants etc.



Proposed South West Elevation



Proposed South East Elevation



Proposed South West Elevation



Proposed North West Elevation

Finishing Schedule as Proposed	
Ridge	Blue grey interlocking ridge tiles
Roof Covering	Composite slate
Fascias/Bargeboards	Grey Upvc
Rainwater Goods	Black Upvc
Walls	Smooth rendered
Plinth	Facing brick
Windows/Doors	Grey Upvc/GRP
Cills	Concrete painted
Heads	Facing brick

0 1 2 3 4 1:100 A3

Drawing Proposed Elevations (House Type 2B)	
Client BDS Contracts Ltd	
Project Title Proposed 24No Dwellings at Land off New Road, Freystrop, Haverfordwest.	
Drawing Number 008	Revision Scale 1:100 Date April 2022



DIRECTIONS

From our office in Haverfordwest proceed along the Freemans Way bypass to Merlins Bridge (McDonald's roundabout). Take the first exit to Hook, Llangwm, Burton, and follow the road to Freystrop. Turn left onto New Road, and you will find the development on the right hand side.
What3Words reference: headline.reissued.jumbled

GENERAL INFORMATION

VIEWING: By appointment only via the Agents.
TENURE: We are advised Freehold.
SERVICES: We have not checked or tested any of the services or appliances at the property.
TAX: Band N/A

We would respectfully ask you to call our office before you view this property internally or externally

MD/MD/02.23/OKMD

FACEBOOK & TWITTER
Be sure to follow us on Twitter: @ WWPProps
<https://www.facebook.com/westwalesproperties/>

AERIAL VIEW

