

**LONDON
VICTORIA
GROUPS** 

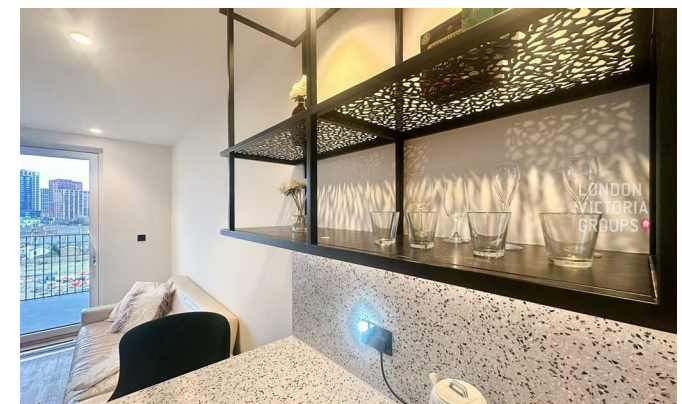
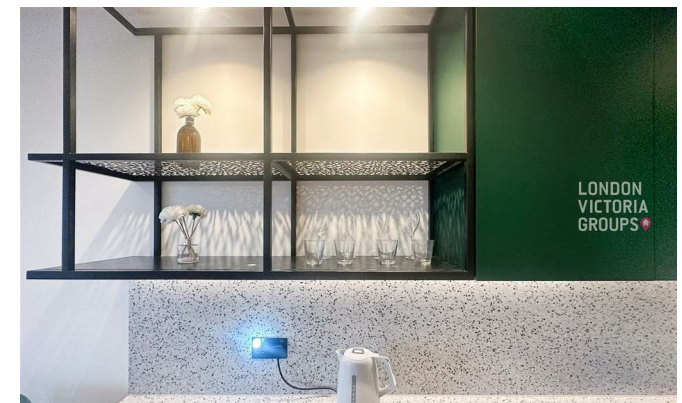


1 Hawser Lane

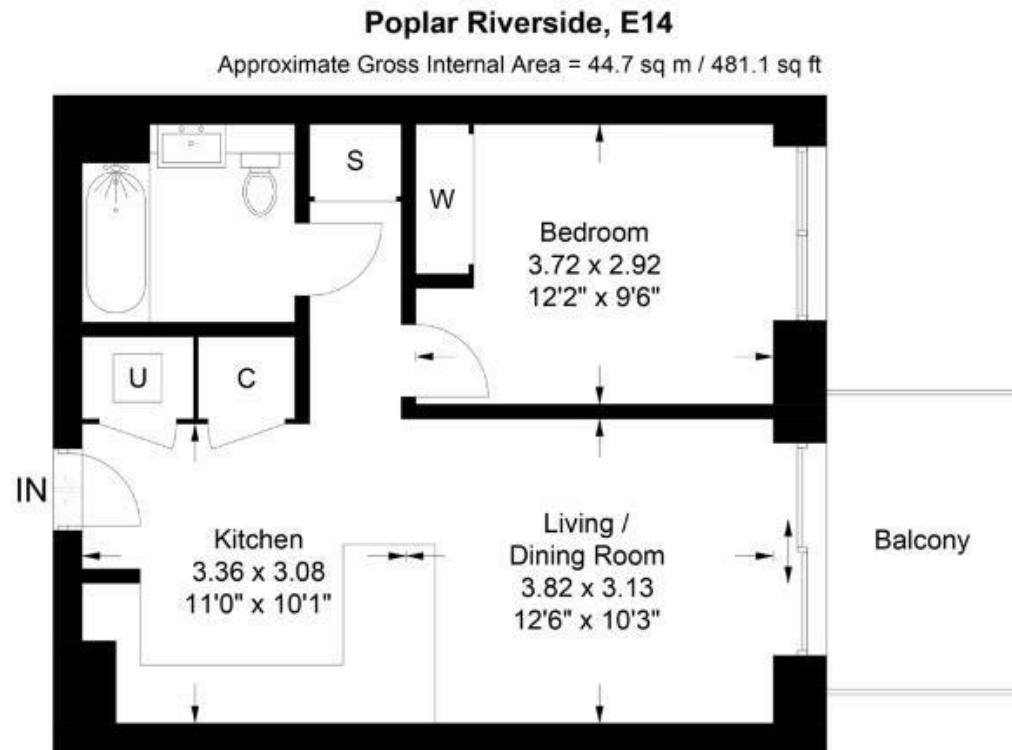
, London E14 0YA

- 24 Hours Concierge
 - River Views
- Landscaped Gardens
 - CTB-D
- Poplar Riverside
 - Gym
 - EPC-B

£2,210 Per Month



Local Authority **Tower Hamlets**
Council Tax Band **D**
EPC Rating **B**



London Office Office
Spaces Victoria, 25 Wilton Road, Pimlico,
London, SW1V 1LW

Contact
0207 515 8885
XL@londonvictoriagroups.co.uk
www.londonvictoriagroups.co.uk

Agents Note: Whilst every care has been taken to prepare these particulars, they are for guidance purposes only. All measurements are approximate and for general guidance purposes only and whilst every care has been taken to ensure accuracy, they should not be relied upon and potential buyers/tenants are advised to recheck the measurements.

