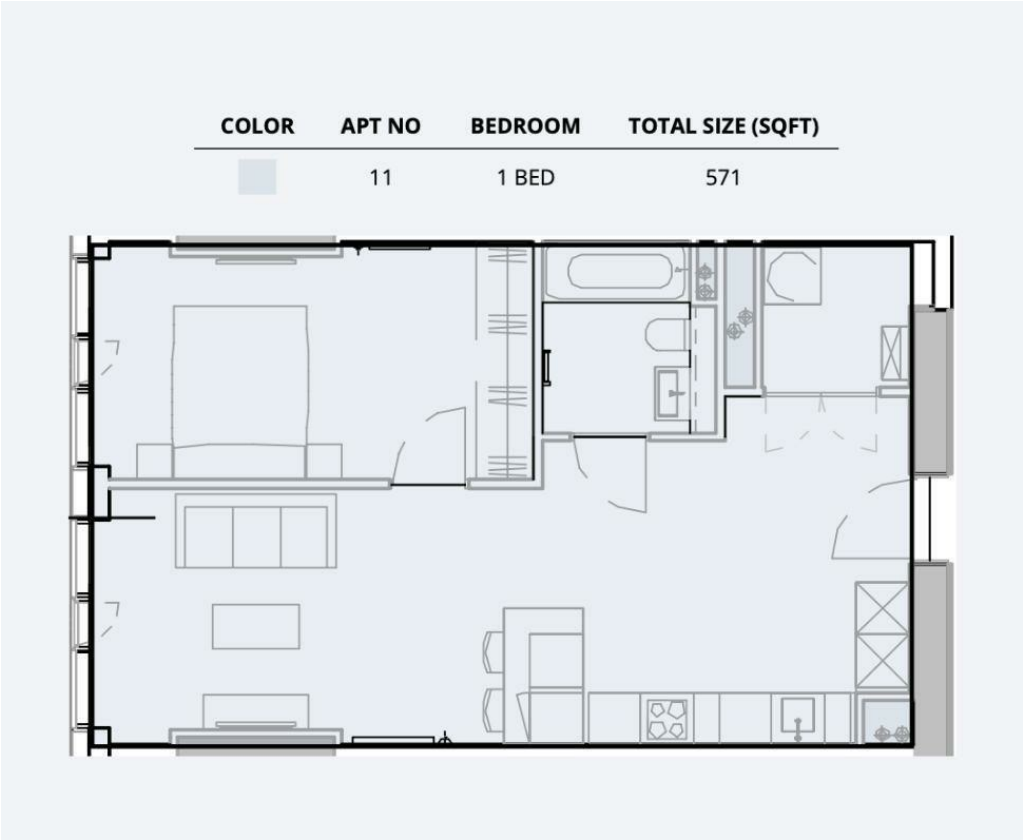


80 Port Street , Manchester M1 2EG

- 24 Hour concierge team
- Expansive gym & yoga studios
- Bookable dining & event spaces
 - Day-to-night lounges
- Green space & terraces
- Indoor swimming pool
- Semi-covered roof terrace
- Social & quiet co-work spaces
- Parcel collection services
- Secure bike storage

£1,650 Per Month

Local Authority
Council Tax Band **New Build**
EPC Rating **B**



London Office Office
Spaces Victoria, 25 Wilton Road, Pimlico,
London, SW1V 1LW

Contact
020 3084 3094
XL@londonvictoriagroups.co.uk
www.londonvictoriagroups.co.uk

Agents Note: Whilst every care has been taken to prepare these particulars, they are for guidance purposes only. All measurements are approximate and for general guidance purposes only and whilst every care has been taken to ensure accuracy, they should not be relied upon and potential buyers/tenants are advised to recheck the measurements.

