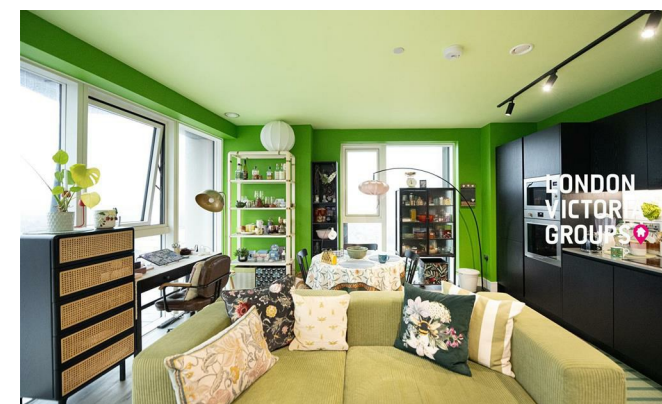


**LONDON
VICTORIA
GROUPS** 



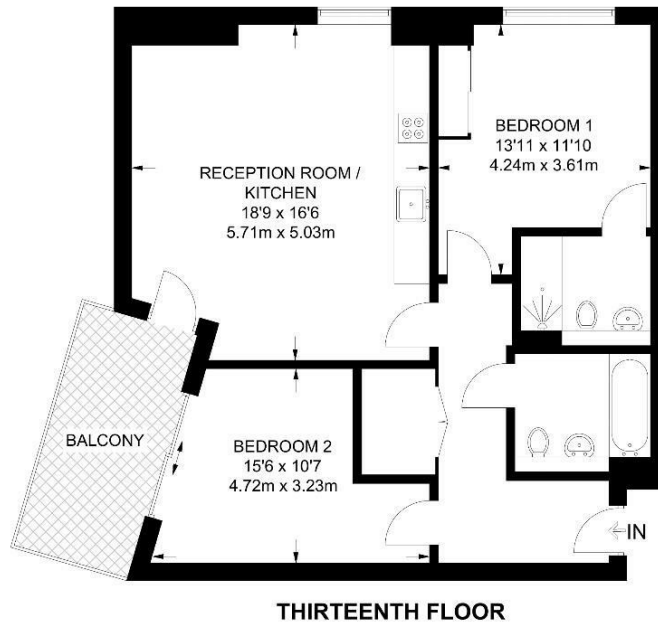
Icon Tower, 8 Portal Way

North Acton, London W3 6DS

- Gym
- Dog Park
- 24-Hour Concierge
- CTB-E
- Roof Garden
- Bicycle Storage
- Close to North Acton Station/Acton Main Line Station
- EPC-B

£2,800 Per Month

Local Authority **Ealing**
Council Tax Band **E**
EPC Rating **B**



APPROXIMATE GROSS INTERNAL AREA
819 SQ FT / 76.1 SQ M

London Office Office
Spaces Victoria, 25 Wilton Road, Pimlico,
London, SW1V 1LW

Contact
020 3084 3094
XL@londonvictoriagroups.co.uk
www.londonvictoriagroups.co.uk

Agents Note: Whilst every care has been taken to prepare these particulars, they are for guidance purposes only. All measurements are approximate and for general guidance purposes only and whilst every care has been taken to ensure accuracy, they should not be relied upon and potential buyers/tenants are advised to recheck the measurements.

