

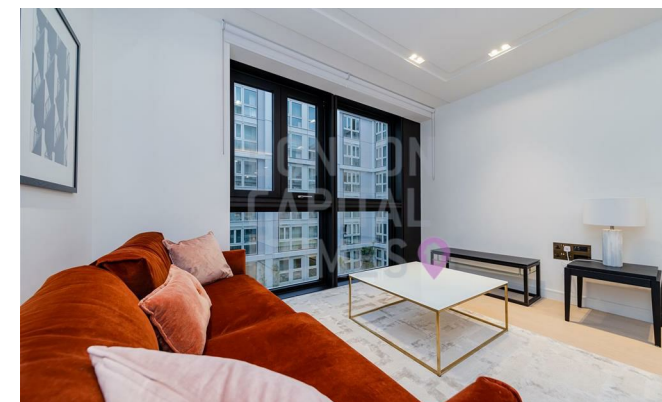


Lincoln Square, 18 Portugal Street

, London WC2A 2AT

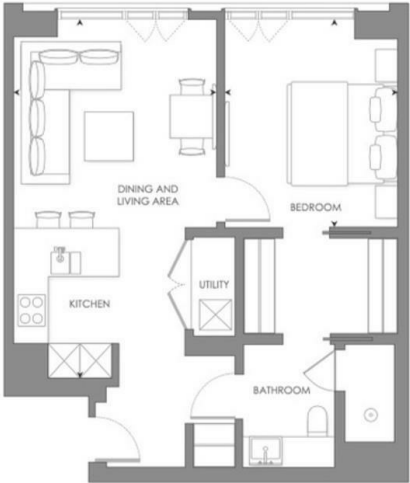
- Close to Holborn station
 - Walk-in wardrobe
 - 24-hour concierge
 - Private cinema
 - EPC-B
- Underfloor heating throughout
 - Floor-to-ceiling windows
 - Gym & 25m Swimming pool
 - CTB-F

£1,400,000 Leasehold



Local Authority **Westminster**
Council Tax Band **F**
EPC Rating **B**

INTERNAL AREA	57 sq m	612 sq ft	- Tranquil garden views
LIVING ROOM/DINING/KITCHEN	3.8 x 6.7 m	3' 6" x 21' 11" ft	- Master bedroom suite with en-suite and walk-in wardrobe
BEDROOM 1	3.27 x 3.88 m	10' 9" x 12' 9" ft	- Social breakfast bar



London Office Office
Spaces Victoria, 25 Wilton Road, Pimlico,
London, SW1V 1LW

Contact
020 3084 3094
XL@londonvictoriagroups.co.uk
www.londonvictoriagroups.co.uk

Agents Note: Whilst every care has been taken to prepare these particulars, they are for guidance purposes only. All measurements are approximate and for general guidance purposes only and whilst every care has been taken to ensure accuracy, they should not be relied upon and potential buyers/tenants are advised to recheck the measurements.

