



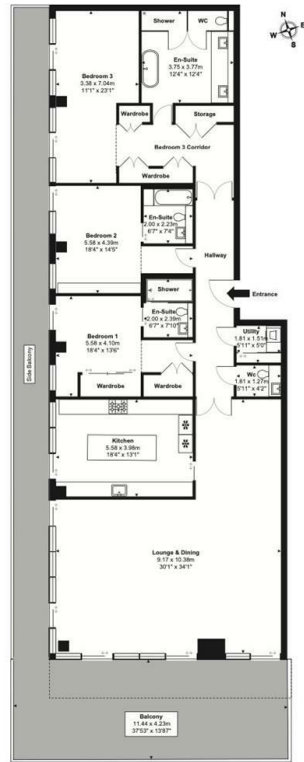
The Heron, 5 Moor Lane

, LONDON EC2Y 9BB

- Approx. 214 Sq M
- Residents' restaurant & cocktail bar
- Residents Lounge & Cinema
- Walking Distance to Moorgate/Liverpool Street Station
- CTB-H
- Ultra-Luxurious 3 bedrooms 4 bathrooms
- On site swimming pool & Spa
- 24 Hours Concierge
- EPC-B

£14,299 PCM

Local Authority **City Of London**
Council Tax Band **H**
EPC Rating **B**



33rd Floor
Total Internal Area: 216.2 m² ... 2327 ft²
Total External Area: 89.42 m² ... 963 ft²
Total Footprint Area: 305.62 m² ... 3290 ft²

London Office Office
Spaces Victoria, 25 Wilton Road, Pimlico,
London, SW1V 1LW

Contact
020 3084 3094
XL@londonvictoriagroups.co.uk
www.londonvictoriagroups.co.uk

Agents Note: Whilst every care has been taken to prepare these particulars, they are for guidance purposes only. All measurements are approximate and for general guidance purposes only and whilst every care has been taken to ensure accuracy, they should not be relied upon and potential buyers/tenants are advised to recheck the measurements.

