

## Wilshire House

2 Prospect Way, LONDON SW11 8DP

- 4 Bedroom 5 Bathroom Apartment
- Comfort cooling
- Residents' gym and wellness suite
- Private cinema and social lounges
- EPC-B
- Open-plan living and dining area
- 24-hour concierge service
- Indoor swimming pool, sauna, and spa facilities
- Access to Battersea Power Station and Battersea Park stations
- CTB-H

**£15,000 Per Month**



Local Authority **Wandsworth**  
Council Tax Band **H**  
EPC Rating

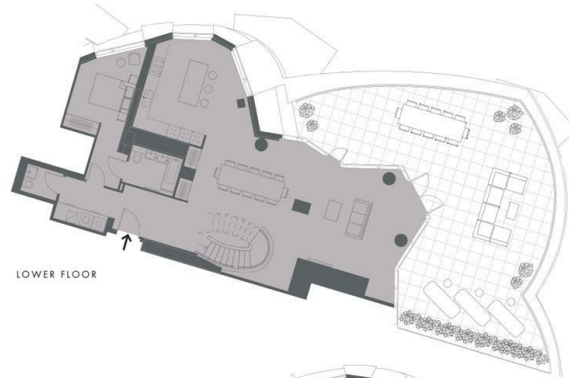
**BATTERSEA  
PROSPECT PLACE**  
PROSPECT PLACE 1

PP1, 13, 01

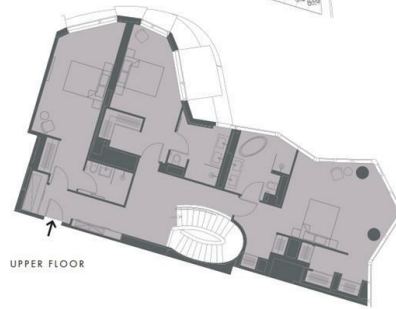
PENTHOUSE  
4 BED, 5 BATH  
2,889sq ft / 268.4sq m

TERRACE  
1,128sq ft / 104.8sq m

TOTAL AREA  
4,017sq ft / 373.2sq m



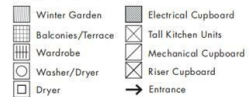
LOWER FLOOR



UPPER FLOOR

SCALE

0m 1m 2m 3m 4m 5m 6m



**London Office Office**

Spaces Victoria, 25 Wilton Road, Pimlico,  
London, SW1V 1LW

**Contact**

020 3084 3094  
XL@londonvictoriagroups.co.uk  
www.londonvictoriagroups.co.uk

Agents Note: Whilst every care has been taken to prepare these particulars, they are for guidance purposes only. All measurements are approximate and for general guidance purposes only and whilst every care has been taken to ensure accuracy, they should not be relied upon and potential buyers/tenants are advised to recheck the measurements.