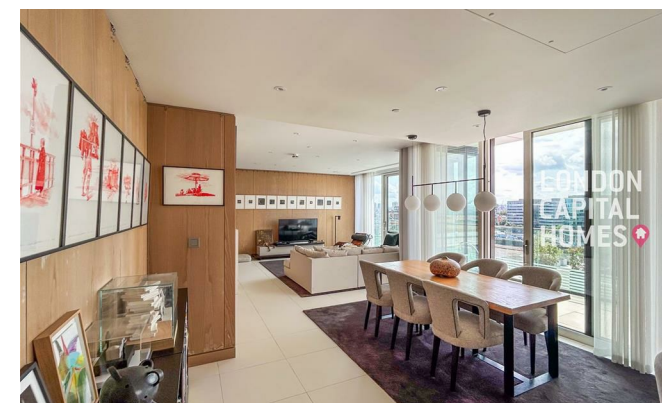


**LONDON
VICTORIA
GROUPS**



1 Water Lane

, London EC3R 6AP

- 2 Bedrooms 3 Bathrooms Apartment
- Open-Plan Living and Dining Area
 - 24-Hour Concierge Service
- Excellent Transport Links to The City and Beyond
 - CTB-G
- Combined 9th/10th Floor Duplex Layout
- Stunning River and City Views
- State-of-the-Art Gym
- EPC-B

£9,500 PCM

Local Authority **City of London**
Council Tax Band **G**
EPC Rating **B**



London Office Office
Spaces Victoria, 25 Wilton Road, Pimlico,
London, SW1V 1LW

Contact
020 3084 3094
XL@londonvictoriagroups.co.uk
www.londonvictoriagroups.co.uk

Agents Note: Whilst every care has been taken to prepare these particulars, they are for guidance purposes only. All measurements are approximate and for general guidance purposes only and whilst every care has been taken to ensure accuracy, they should not be relied upon and potential buyers/tenants are advised to recheck the measurements.

