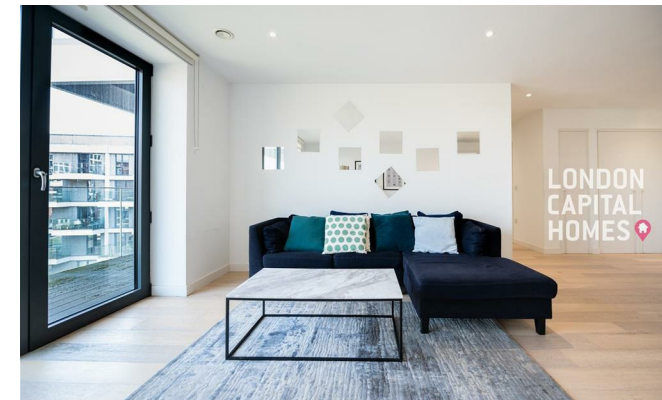


**LONDON
VICTORIA
GROUPS** 



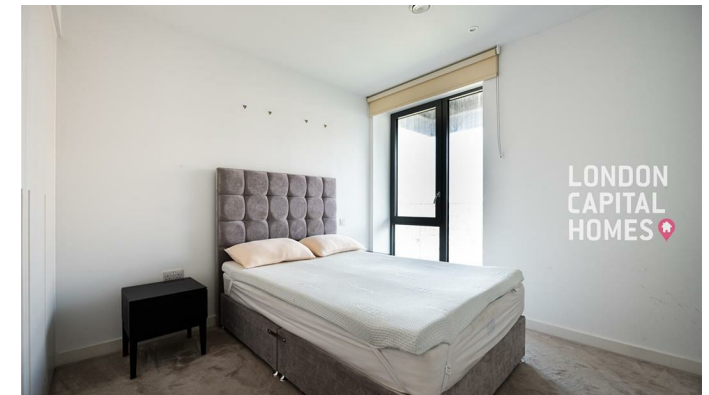
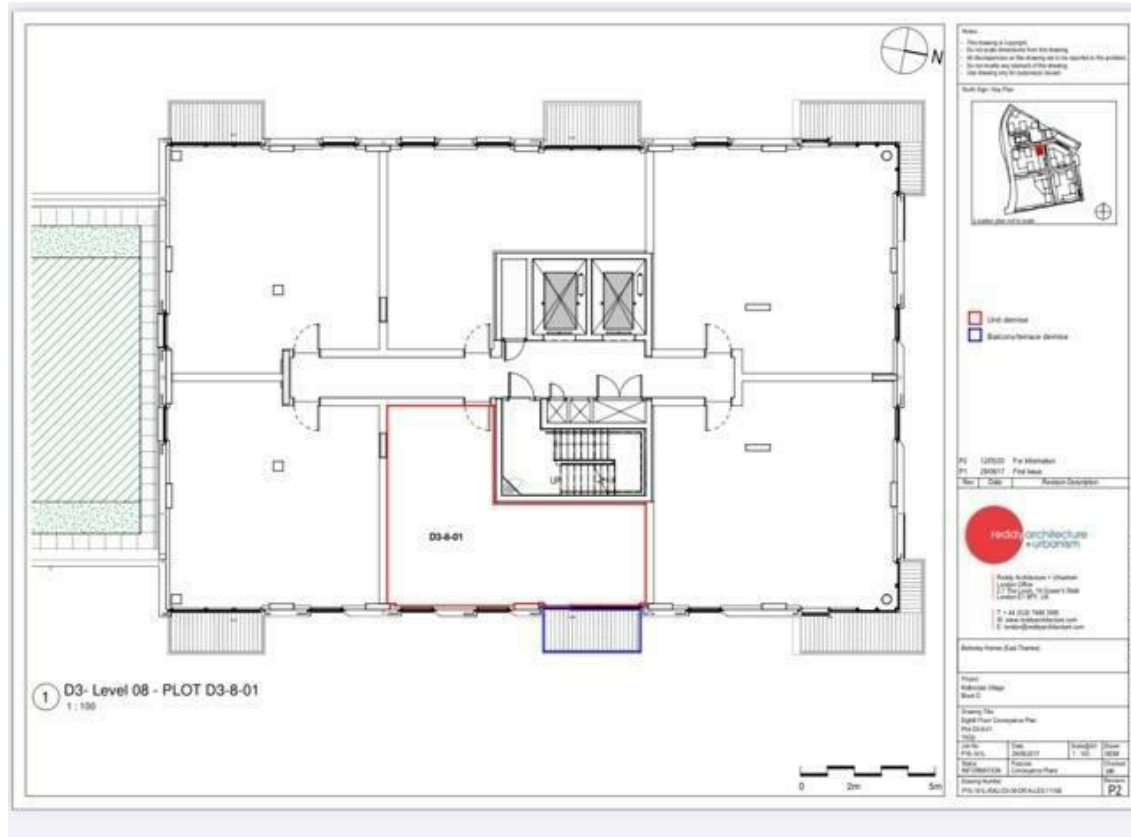
1 Bonnet Street

, London E16 2SY

- TWO-BEDROOM APARTMENT
 - Private Balcony
 - 24-Hour Concierge
- Close to Thames Clipper & DLR links (Pontoon Dock / Royal Wharf)
 - CTB-E
- Open-Plan Living and Dining Area
 - Underfloor Heating
- Gym, indoor pool, sauna & steam room
 - EPC-B

£550,000 Leasehold

Local Authority **Newham**
Council Tax Band **E**
EPC Rating **B**



London Office Office
Spaces Victoria, 25 Wilton Road, Pimlico,
London, SW1V 1LW

Contact
020 3084 3094
XL@londonvictoriagroups.co.uk
www.londonvictoriagroups.co.uk

Agents Note: Whilst every care has been taken to prepare these particulars, they are for guidance purposes only. All measurements are approximate and for general guidance purposes only and whilst every care has been taken to ensure accuracy, they should not be relied upon and potential buyers/tenants are advised to recheck the measurements.