

LONDON
VICTORIA
GROUPS



LONDON
CAPITAL
HOMES

1 Park Drive

, London E14 9BB

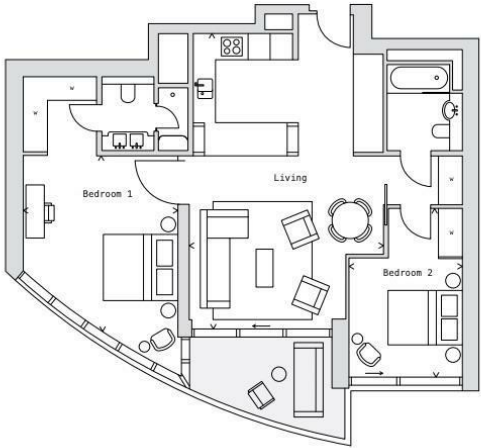
- Excellent transport links: Jubilee Line, Elizabeth Line & DLR
- Residents' lounge
- Private cinema
- Swimming Pool
- EPC-B
- Including one Parking Space + one Storage
- SPA
- State-of-the-art gym
- 24-hour concierge
- CTB-F

£1,575,000 Leasehold



Local Authority **Tower Hamlets**
Council Tax Band **F**
EPC Rating **B**

| BAY | LOCATION | DATA | IMPERIAL | METRIC |
|---------|--------------|-----------|-------------------|---------------|
| TYPE 21 | Floorplate K | Apartment | 1017 sq ft | 94.5 sq m |
| 2 BED | Page 79 | Terrace | 94 sq ft | 8.7 sq m |
| | | Living | 26' 03" x 17' 03" | 7.99 x 5.26 m |
| | | Bedroom 1 | 15' 07" x 13' 09" | 4.79 x 4.19 m |
| | | Bedroom 2 | 15' 10" x 10' 02" | 4.83 x 3.10 m |



London Office Office
Spaces Victoria, 25 Wilton Road, Pimlico,
London, SW1V 1LW

Contact
020 3084 3094
XL@londonvictoriagroups.co.uk
www.londonvictoriagroups.co.uk

Agents Note: Whilst every care has been taken to prepare these particulars, they are for guidance purposes only. All measurements are approximate and for general guidance purposes only and whilst every care has been taken to ensure accuracy, they should not be relied upon and potential buyers/tenants are advised to recheck the measurements.

