

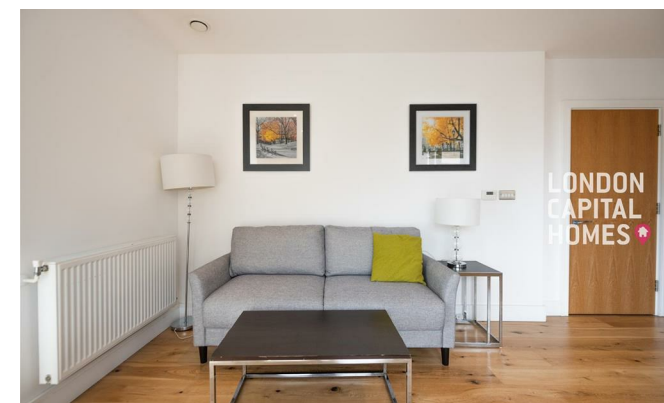
**LONDON
VICTORIA
GROUPS**



5 Nelson Street , LONDON E16 1XG

- Canning Town Station
- Close To Park
- EPC-B
- Convenient Living
- A Thriving Riverside Residential Area
- CTB-C

£2,500 PCM



Local Authority **Newham**
Council Tax Band **C**
EPC Rating **B**



London Office Office

Spaces Victoria, 25 Wilton Road, Pimlico,
London, SW1V 1LW

Contact

020 3084 3094
XL@londonvictoriagroups.co.uk
www.londonvictoriagroups.co.uk

Agents Note: Whilst every care has been taken to prepare these particulars, they are for guidance purposes only. All measurements are approximate and for general guidance purposes only and whilst every care has been taken to ensure accuracy, they should not be relied upon and potential buyers/tenants are advised to recheck the measurements.