



Juniper Garden, 9 Gasholder Place

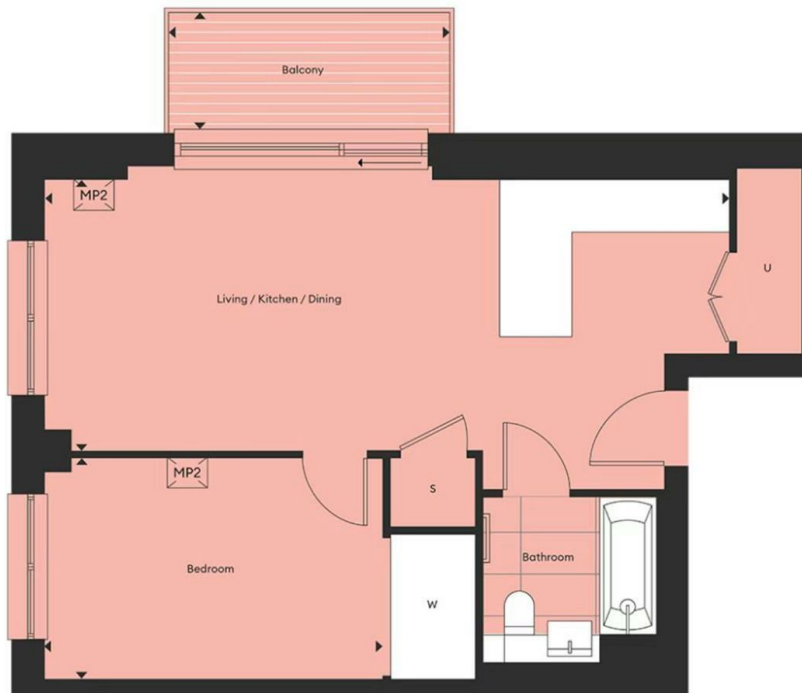
, London SE11 5AU

- 1 Bedroom | 1 Bathroom
- Private Balcony
- Built-In Storage | Quality Fixtures
- Gym
- Open-Plan Layout with Modern Kitchen
- Floor-to-Ceiling Windows
- Secure Entry & Lift Access
- Concierge

£2,800 Per Month



Local Authority
Council Tax Band
EPC Rating **B**



London Office Office
Spaces Victoria, 25 Wilton Road, Pimlico,
London, SW1V 1LW

Contact
0207 515 8885
XL@londonvictoriagroups.co.uk
www.londonvictoriagroups.co.uk

Agents Note: Whilst every care has been taken to prepare these particulars, they are for guidance purposes only. All measurements are approximate and for general guidance purposes only and whilst every care has been taken to ensure accuracy, they should not be relied upon and potential buyers/tenants are advised to recheck the measurements.

