

**LONDON  
VICTORIA  
GROUPS** 



## **Waterside Heights 16 Booth Road**

, LONDON E16 2GP

- Pontoon Dock DLR
  - Gym
- Riverside Development
  - CTB-D
- Thames Barrier Park
  - 24-Hour Concierge
  - EPC-B

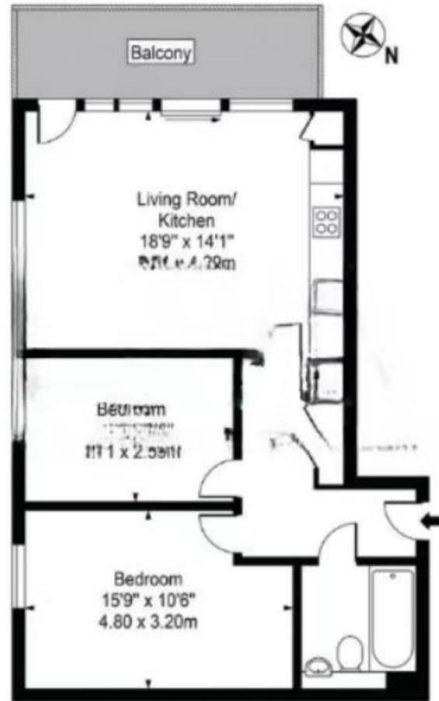
**£2,400 PCM**



Local Authority **Newham**  
Council Tax Band **D**  
EPC Rating **B**

### Waterside Heights

Approx. Gross Internal Area 687 Sq Ft - 63.82 Sq M



**London Office Office**  
Spaces Victoria, 25 Wilton Road, Pimlico,  
London, SW1V 1LW

**Contact**  
0207 515 8885  
[XL@londonvictoriagroups.co.uk](mailto:XL@londonvictoriagroups.co.uk)  
[www.londonvictoriagroups.co.uk](http://www.londonvictoriagroups.co.uk)

Agents Note: Whilst every care has been taken to prepare these particulars, they are for guidance purposes only. All measurements are approximate and for general guidance purposes only and whilst every care has been taken to ensure accuracy, they should not be relied upon and potential buyers/tenants are advised to recheck the measurements.

