

**LONDON
VICTORIA
GROUPS** 



Oldbury Place, Marylebone High Street

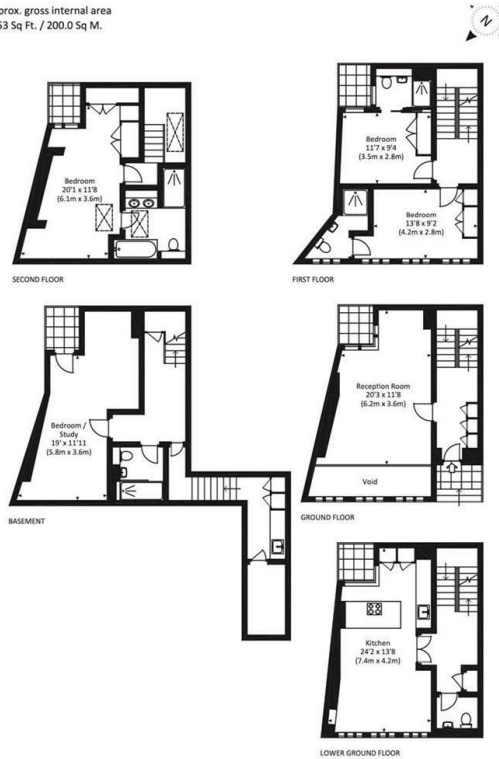
, London W1U 5PS

- Approx. 239 square metres
- Close to Marylebone and Regent's Park
- Luxury 4 bedroom 5 bathroom house
- Terraced House
- Amazing Location
- CTB-H
- EPC-B

£10,200 PCM

Local Authority **Westminster**
Council Tax Band **H**
EPC Rating **B**

Approx. gross internal area
2153 Sq Ft. / 200.0 Sq M.



All measurements have been made in accordance with RICS Code of Measuring Practice which are approximate only and for illustrative purposes. For the avoidance of doubt, drawing zones/Design shall not be held for any reliance on these measurements. © 2017 www.londonvictoriagroups.co.uk 020 7533 1933

London Office Office
Spaces Victoria, 25 Wilton Road, Pimlico,
London, SW1V 1LW

Contact
0207 515 8885
XL@londonvictoriagroups.co.uk
www.londonvictoriagroups.co.uk

Agents Note: Whilst every care has been taken to prepare these particulars, they are for guidance purposes only. All measurements are approximate and for general guidance purposes only and whilst every care has been taken to ensure accuracy, they should not be relied upon and potential buyers/tenants are advised to recheck the measurements.

