



8 Cutter Lane

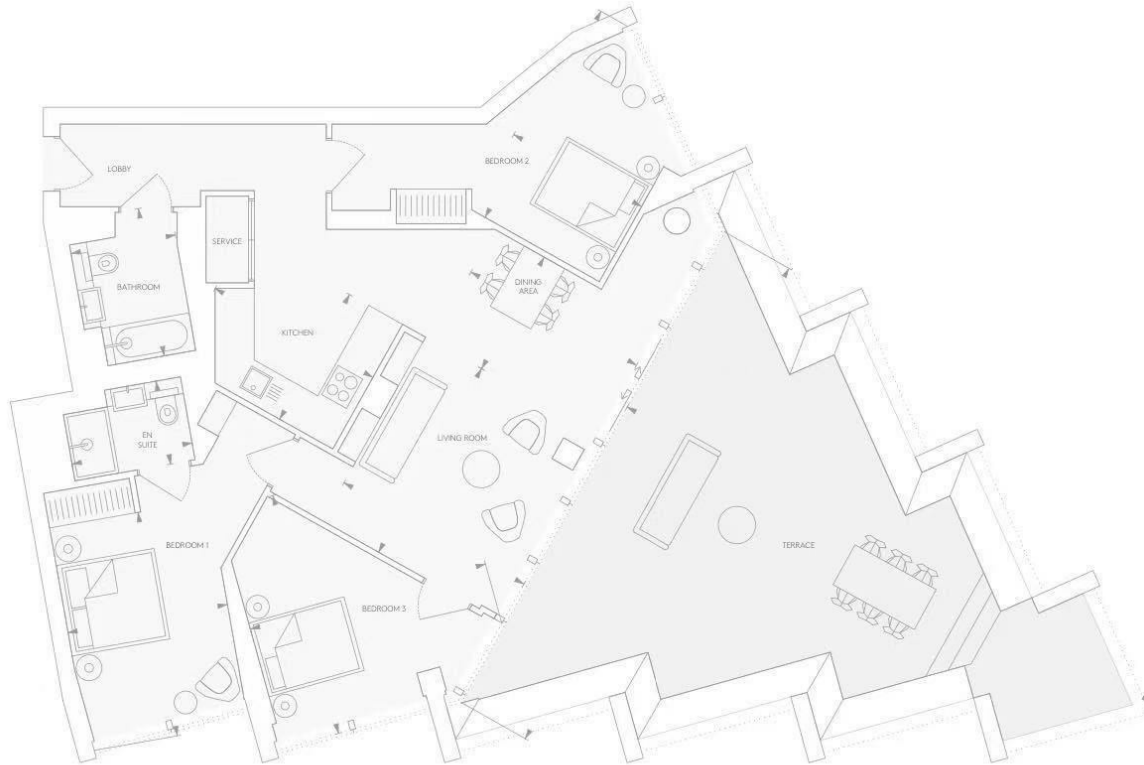
, London SE10 0YX

- Total: 103m2
- Floor-to-ceiling windows & private balcony with panoramic river views
- Luxury spa & gym
- 20?m swimming pool, gym
- EPC-B
- Brand New Three Bedroom Apartment
- 24-hour concierge service
- Cinema room, co-working lounge
- 2-3?min walk to North Greenwich Station
- CTB-G

£4,766 PCM



Local Authority **Greenwich**
Council Tax Band **G**
EPC Rating **B**



London Office Office
Spaces Victoria, 25 Wilton Road, Pimlico,
London, SW1V 1LW

Contact
0207 515 8885
XL@londonvictoriagroups.co.uk
www.londonvictoriagroups.co.uk

Agents Note: Whilst every care has been taken to prepare these particulars, they are for guidance purposes only. All measurements are approximate and for general guidance purposes only and whilst every care has been taken to ensure accuracy, they should not be relied upon and potential buyers/tenants are advised to recheck the measurements.

