

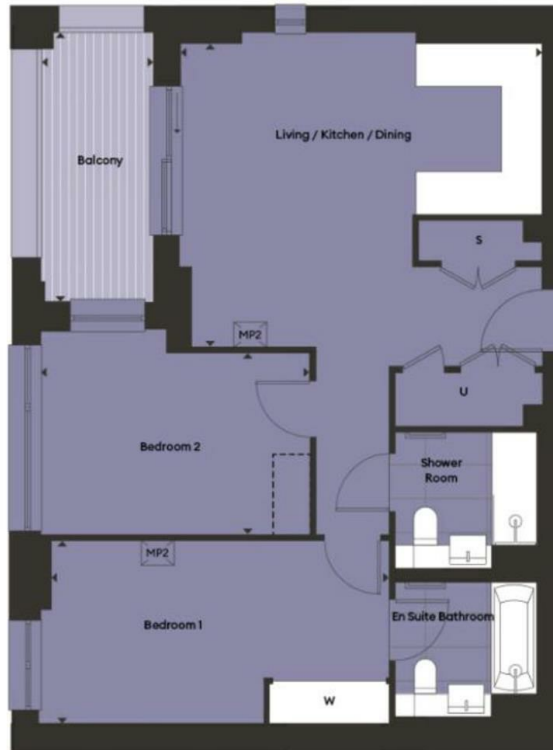
**LONDON
VICTORIA
GROUPS** 



Juniper Gardens, Oval Village, 283 Kennington Ln
 , London SE11 5QY

£3,750 Per Month

Local Authority **Lambeth**
Council Tax Band **New Build**
EPC Rating



London Office Office
Spaces Victoria, 25 Wilton Road, Pimlico,
London, SW1V 1LW

Contact
0207 515 8885
XL@londonvictoriagroups.co.uk
www.londonvictoriagroups.co.uk

Agents Note: Whilst every care has been taken to prepare these particulars, they are for guidance purposes only. All measurements are approximate and for general guidance purposes only and whilst every care has been taken to ensure accuracy, they should not be relied upon and potential buyers/tenants are advised to recheck the measurements.

