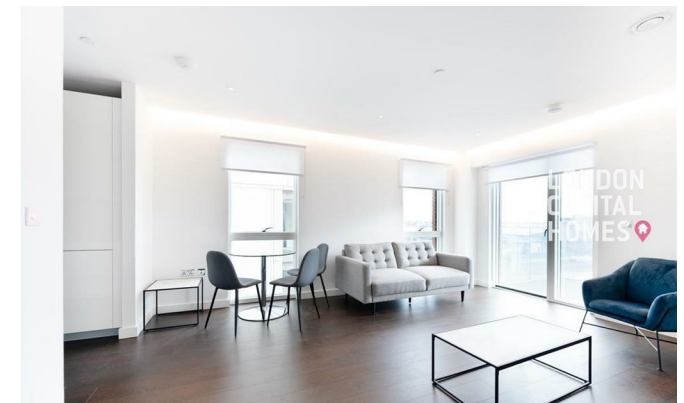


**LONDON
VICTORIA
GROUPS**



Senate Building, 3 Lanchester Way
LONDON SW11 7DD

£2,650 PCM



Local Authority **Lambeth**
Council Tax Band **E**
EPC Rating



APARTMENT LG23

Kitchen	2.640m x 2.000m	8'8" x 6'7"
Living/Dining	5.115m x 4.160m	16'9" x 13'8"
Bedroom	3.915m x 3.030m	12'10" x 9'11"
Total	52.4 sq m	564 sq ft

London Office Office
Spaces Victoria, 25 Wilton Road, Pimlico,
London, SW1V 1LW

Contact
0207 515 8885
XL@londonvictoriagroups.co.uk
www.londonvictoriagroups.co.uk

Agents Note: Whilst every care has been taken to prepare these particulars, they are for guidance purposes only. All measurements are approximate and for general guidance purposes only and whilst every care has been taken to ensure accuracy, they should not be relied upon and potential buyers/tenants are advised to recheck the measurements.

