

**LONDON
VICTORIA
GROUPS** 



**LONDON
CAPITAL
HOMES** 



**LONDON
CAPITAL
HOMES** 



**LONDON
CAPITAL
HOMES** 

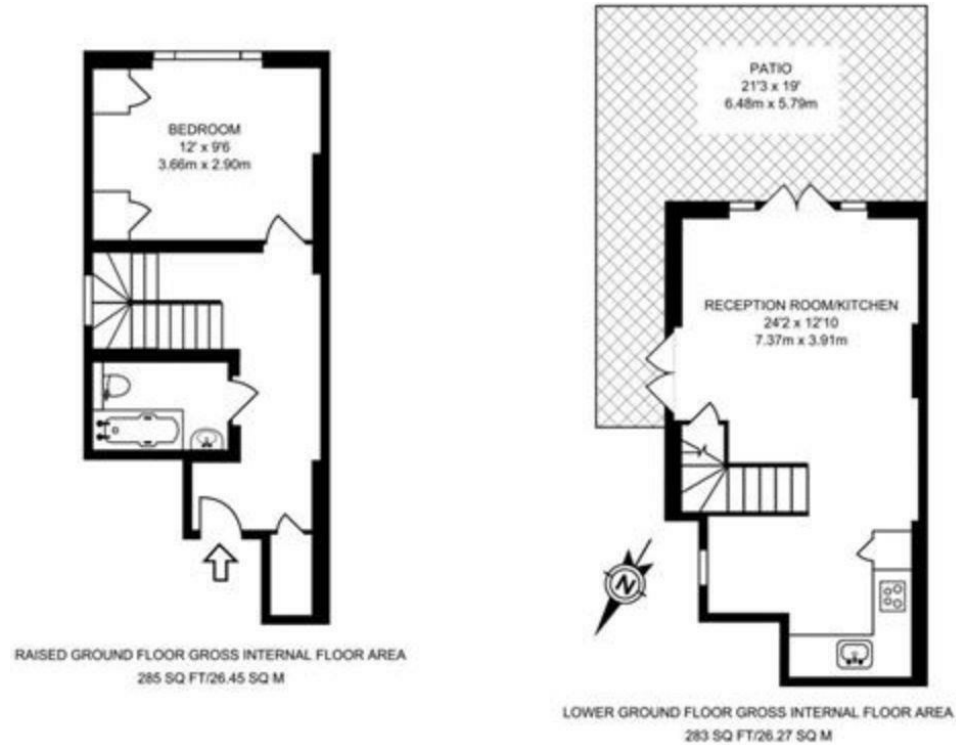
21 Collingham Place
, London SW5 0QF

£2,383 PCM



**LONDON
CAPITAL
HOMES** 

Local Authority **Kensington and Chelsea**
Council Tax Band **D**
EPC Rating



This plan has been drawn for illustrative and identification purposes only.

London Office Office
Spaces Victoria, 25 Wilton Road, Pimlico,
London, SW1V 1LW

Contact
0207 515 8885
XL@londonvictoriagroups.co.uk
www.londonvictoriagroups.co.uk

Agents Note: Whilst every care has been taken to prepare these particulars, they are for guidance purposes only. All measurements are approximate and for general guidance purposes only and whilst every care has been taken to ensure accuracy, they should not be relied upon and potential buyers/tenants are advised to recheck the measurements.

