



BYWATER HERRING

SALES & LETTINGS

- A TRADITION OF TRUST -



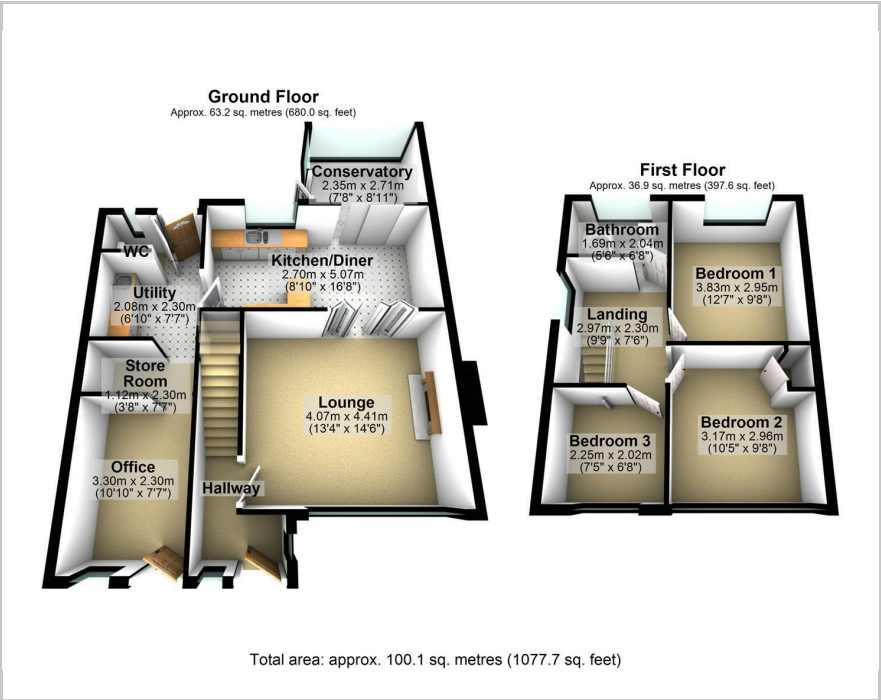
Bradshaw Way, Irchester

Offers Over £299,950





Floor Plan

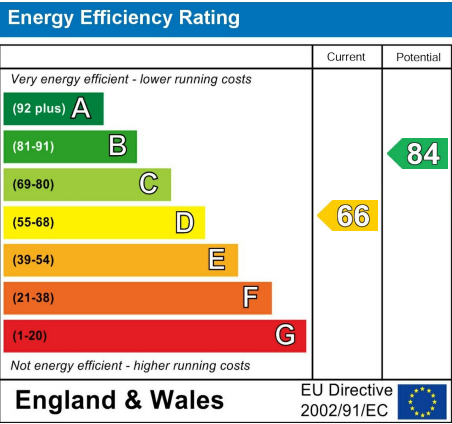


Area Map



Accommodation

- A chain free and freshly decorated semi – move in now and make it your own
- Smart garage conversion gives you a home office with its own front entrance, utility, store room and w/c
- Kitchen-diner is perfect for family catch-ups or midweek homework marathons
- Conservatory gives you extra space to relax, eat or keep an eye on the kids
- Spacious lounge connects to the kitchen via French doors for an easy, flowing layout
- Two double bedrooms and a single upstairs
- Stylish and modern family bathroom
- Parking for two cars on the low maintenance drive
- Located on a quiet family-friendly street just 10 mins' walk to the village centre
- A short stroll to Irchester Country Park – ideal for weekend walks and woodland adventures



These particulars, whilst believed to be accurate are set out as a general outline only for guidance and do not constitute any part of an offer or contract. Intending purchasers should not rely on them as statements of representation of fact, but must satisfy themselves by inspection or otherwise as to their accuracy. No person in this firm's employment has the authority to make or give any representation or warranty in respect of the property.