



BYWATER HERRING

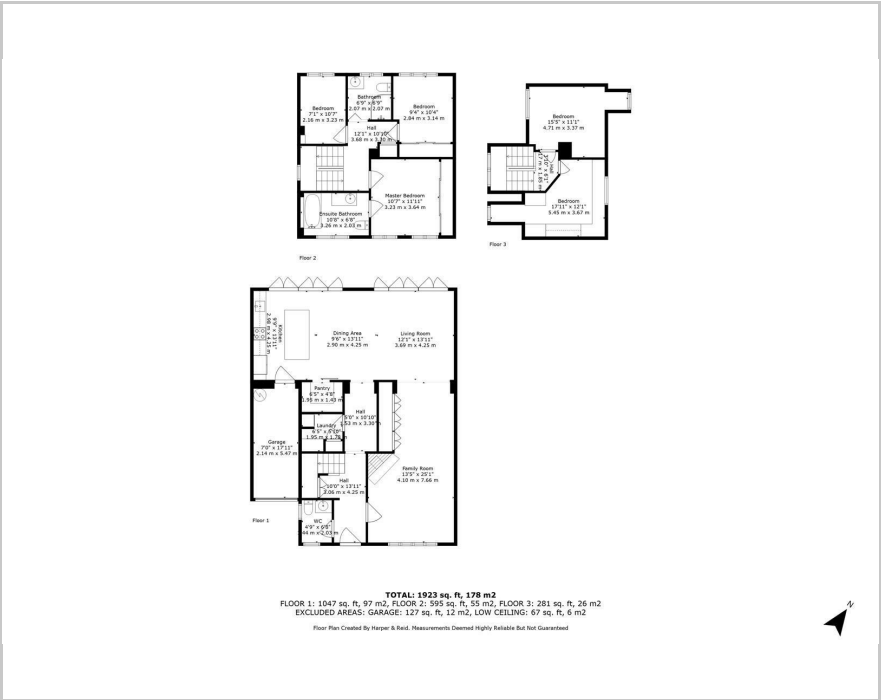
SALES & LETTINGS

- A TRADITION OF TRUST -

Back Lane, Little Addington
Offers In The Region Of £619,500



Floor Plan

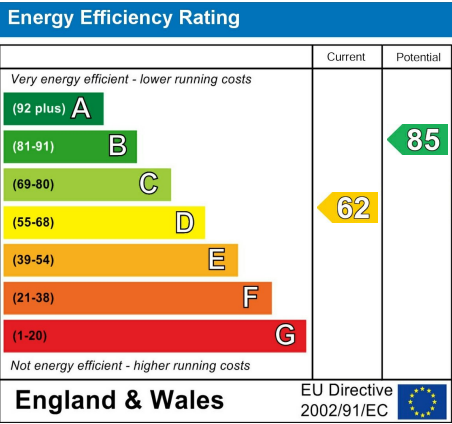


Area Map



Accommodation

- Fabulous Five Bedroom Family Home
- Stylish Open-Plan Kitchen And Dining Room
- Bi-Fold Doors Leading To Large Enclosed Garden Overlooking Open Fields
- Spacious Lounge With A Log Burner And Plenty Of Natural Light
- Lovingly Cared For And Ready To Move Into
- Main Bedroom With A Stylish En-Suite And Freestanding Slipper Bath
- Set In A Peaceful Village With Great Walks And Countryside On Your Doorstep
- Gated Driveway With Charge Point For Electric Car
- London In An Hour But Close To The Countryside
- Air Source Heat Pump And Utility Room Make For Practical, Energy-Efficient Living



These particulars, whilst believed to be accurate are set out as a general outline only for guidance and do not constitute any part of an offer or contract. Intending purchasers should not rely on them as statements of representation of fact, but must satisfy themselves by inspection or otherwise as to their accuracy. No person in this firms employment has the authority to make or give any representation or warranty in respect of the property.