



BYWATER HERRING

SALES & LETTINGS

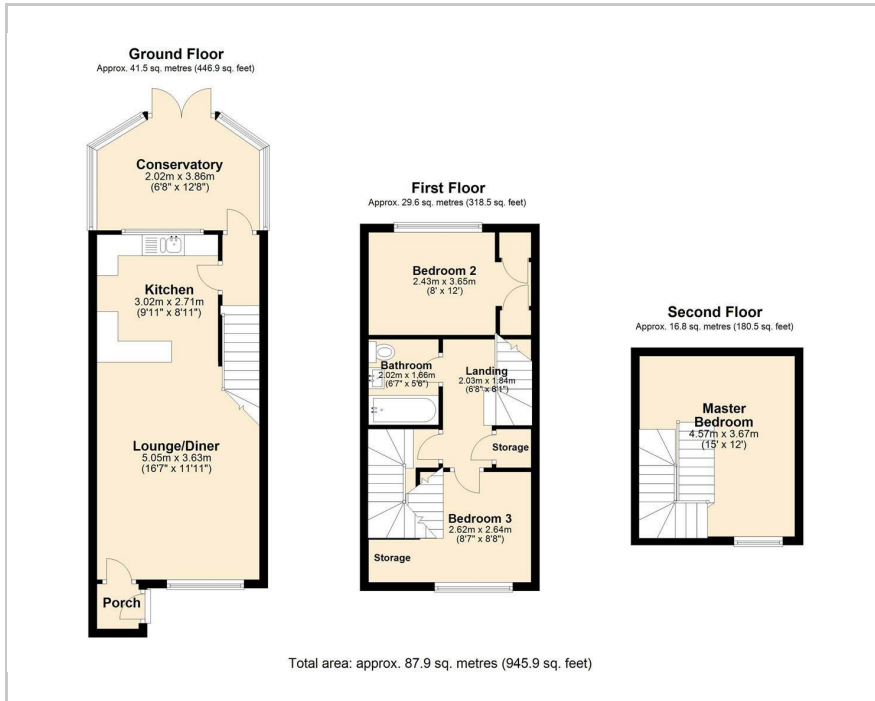
- A TRADITION OF TRUST -



Warren Close, Irchester
Offers Over £220,000



Floor Plan



Accommodation

- Affordable Family Home
- Immaculate Condition Throughout
- Open Plan Living
- Modern Kitchen And Bathroom
- Lovingly Cared For And Ready To Move Into
- Low Maintenance Garden
- Off Street Parking
- Council Tax A
- Good Local Schools
- London In An Hour But Close To The Countryside



Area Map



Energy Efficiency Rating		Current	Potential
Very energy efficient - lower running costs			
(92 plus)	A		88
(81-91)	B		
(69-80)	C		
(55-68)	D		
(39-54)	E	50	
(21-38)	F		
(1-20)	G		
Not energy efficient - higher running costs			
England & Wales		EU Directive 2002/91/EC	



These particulars, whilst believed to be accurate are set out as a general outline only for guidance and do not constitute any part of an offer or contract. Intending purchasers should not rely on them as statements of representation of fact, but must satisfy themselves by inspection or otherwise as to their accuracy. No person in this firm's employment has the authority to make or give any representation or warranty in respect of the property.