



**FELIKS AUGUSTINE**

PROPERTY SALES AND LETTINGS



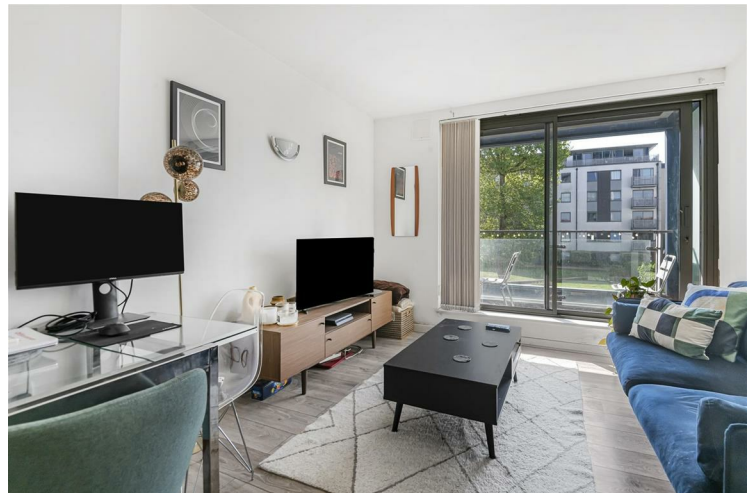
## 38 Blackheath Road London

**£1,695 Per**

Perfectly situated in the cohesive Deals Gateway development, this excellent flat offers a perfect blend of modern living and convenience. At 43 square meters the property features a well-appointed reception room, a comfortable bedroom and a stylish bathroom, making it an ideal choice for individuals or couples seeking a cosy yet functional space.

Constructed in 2007, this home is situated just a short six-minute stroll from the vibrant Greenwich Town Centre, where you can enjoy a variety of shops, restaurants, and cultural attractions. For those who commute, the property is conveniently located just two minutes from the Docklands Light Railway (DLR), providing easy access to key destinations such as Bank, Canary Wharf, Tower Gateway, Stratford and Lewisham.

The location is not only practical but also peaceful, offering a quiet retreat from the hustle and bustle of city life. Residents will benefit from an excellent long-standing landlord, ensuring a smooth and pleasant renting experience. Additionally, the property boasts a range of impressive amenities, including a 24-hour concierge service, a gym, a fitness pool, and an on-site restaurant. For your daily











Energy Efficiency Rating		
	Current	Potential
Very energy efficient - lower running costs		
(92 plus) A		
(81-91) B	83	85
(69-80) C		
(55-68) D		
(39-54) E		
(21-38) F		
(1-20) G		
Not energy efficient - higher running costs		
England & Wales	EU Directive 2002/91/EC	

Agents Note: Whilst every care has been taken to prepare these particulars, they are for guidance purposes only. All measurements are approximate and are for general guidance purposes only and whilst every care has been taken to ensure their accuracy, they should not be relied upon and potential buyers/tenants are advised to recheck the measurements

London Bridge  
52 Weston Street  
London  
SE1 3QJ

lettings@feliksaugustine.com  
<http://www.feliksaugustine.com/>

