



23 Celeste House 4 Beresford Avenue, Wembley, Middlesex, HA0 1PX  
**£1,650 Per Month**





23 Celeste House 4 Beresford Avenue, Wembley, Middlesex, HA0 1PX

**£1,650 Per Month**

Grand Union is a vibrant new Canalside neighbourhood by St George. Located in Alperton, close to Wembley with great connections into the City and West End.

Enjoy a waterside piazza with cafes, restaurants, bars and a community centre at its heart. With 14 acres of high-quality open space including landscaped gardens, riverside meadows, waterside pathways, Grand Union will be a unique waterside destination to live, work and relax.



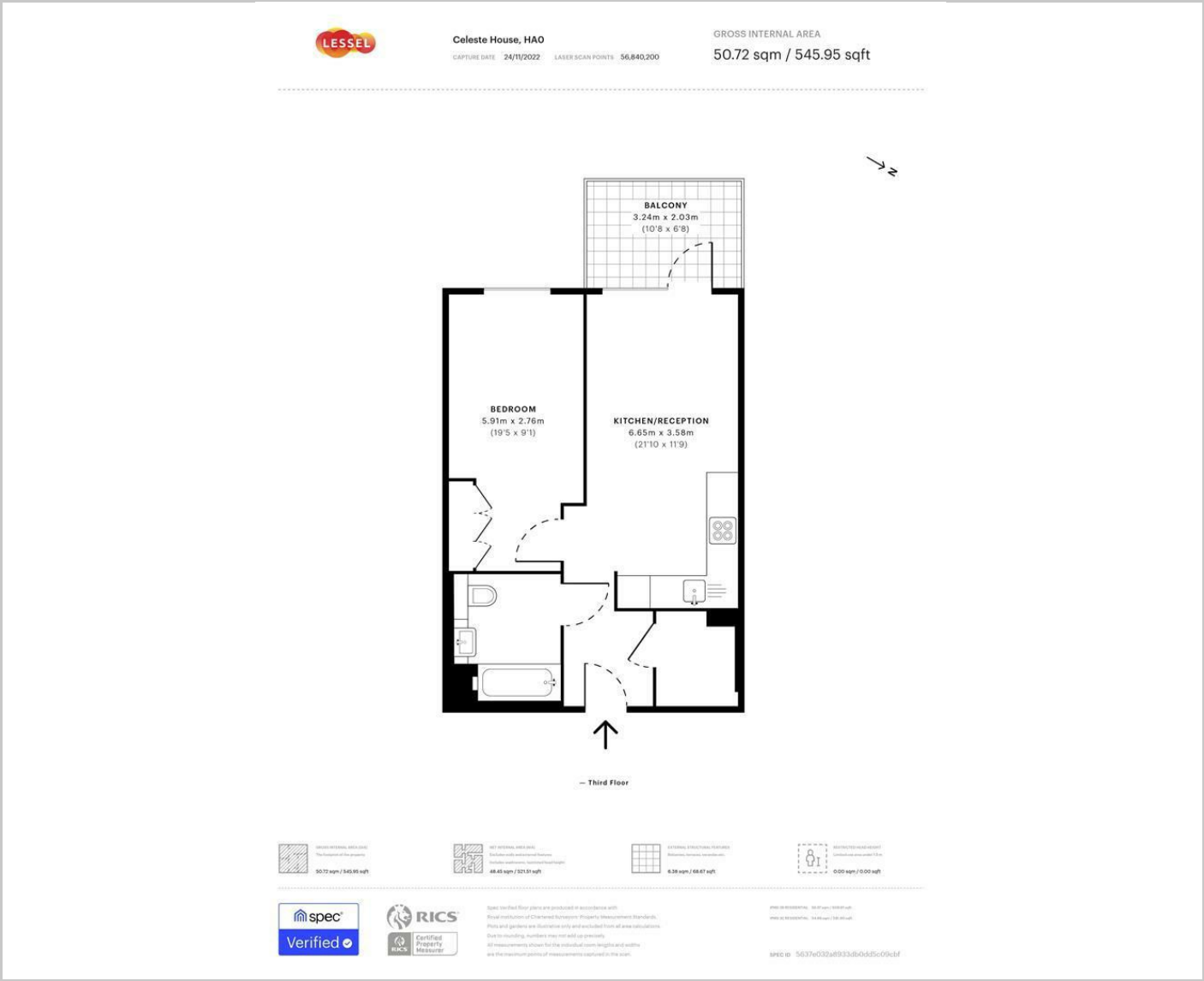
## Description

## Situation

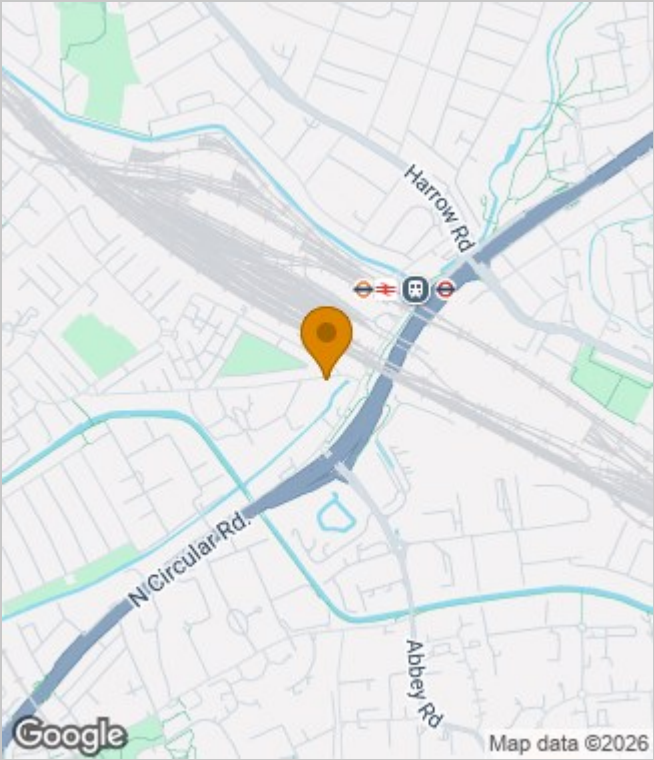
Furnished/unfurnished  
Council Tax Band: New Build  
Available: 2nd January 2026



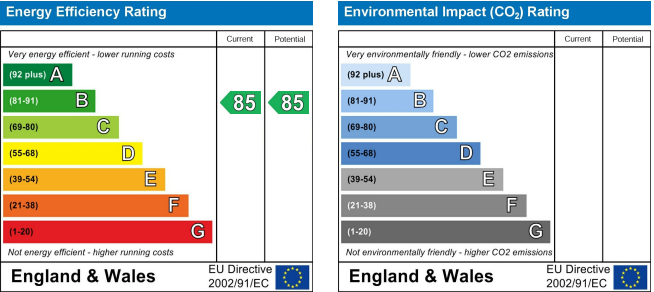
Floor Plans



Area Map



Energy Performance Graph



These particulars, whilst believed to be accurate are set out as a general outline only for guidance and do not constitute any part of an offer or contract. Intending purchasers should not rely on them as statements of representation of fact, but must satisfy themselves by inspection or otherwise as to their accuracy. No person in this firms employment has the authority to make or give any representation or warranty in respect of the property.