



Apartment 1505 Hampton Tower 75 Marsh Wall, London, E14 9RJ

£920 Per Week



Apartment 1505 Hampton Tower 75 Marsh Wall, London, E14 9RJ

£920 Per Week

A luxury apartment sits within this highly anticipated development, South Quay Plaza.

In this contemporary apartment located by Canary Wharf, the property comes with high specification fixtures and furnished to create spaces that are warm and comforting. The natural tone of the furniture in the open plan living/kitchen area completed with wood flooring is ideal for relaxation after a long day or entertaining friends/family for a dinner party. Floor to ceiling windows allow plenty of lights through and dual aspect view from the lounge. Gloss finish gallery kitchen comes with fully integrated appliances such as fridge/freezer, oven, hob, wine cooler and dishwasher, handleless cabinets provide an uncluttered feel which is also very easy to maintain. Carpet finish to bedroom. The spacious double bedroom has an ample storage with fitted wardrobe and en-suite bathroom includes mirrored cabinets with integrated lighting. There is also plenty of room for an additional desk, perfect for WFH.

Residents benefit from dedicated 24hr concierge service. On-site facilities include residence gymnasium, swimming pool, spa, private cinema and rooftop garden. Local Amenities including Tesco Express, Chatime, dry cleaners, various bars and restaurants.

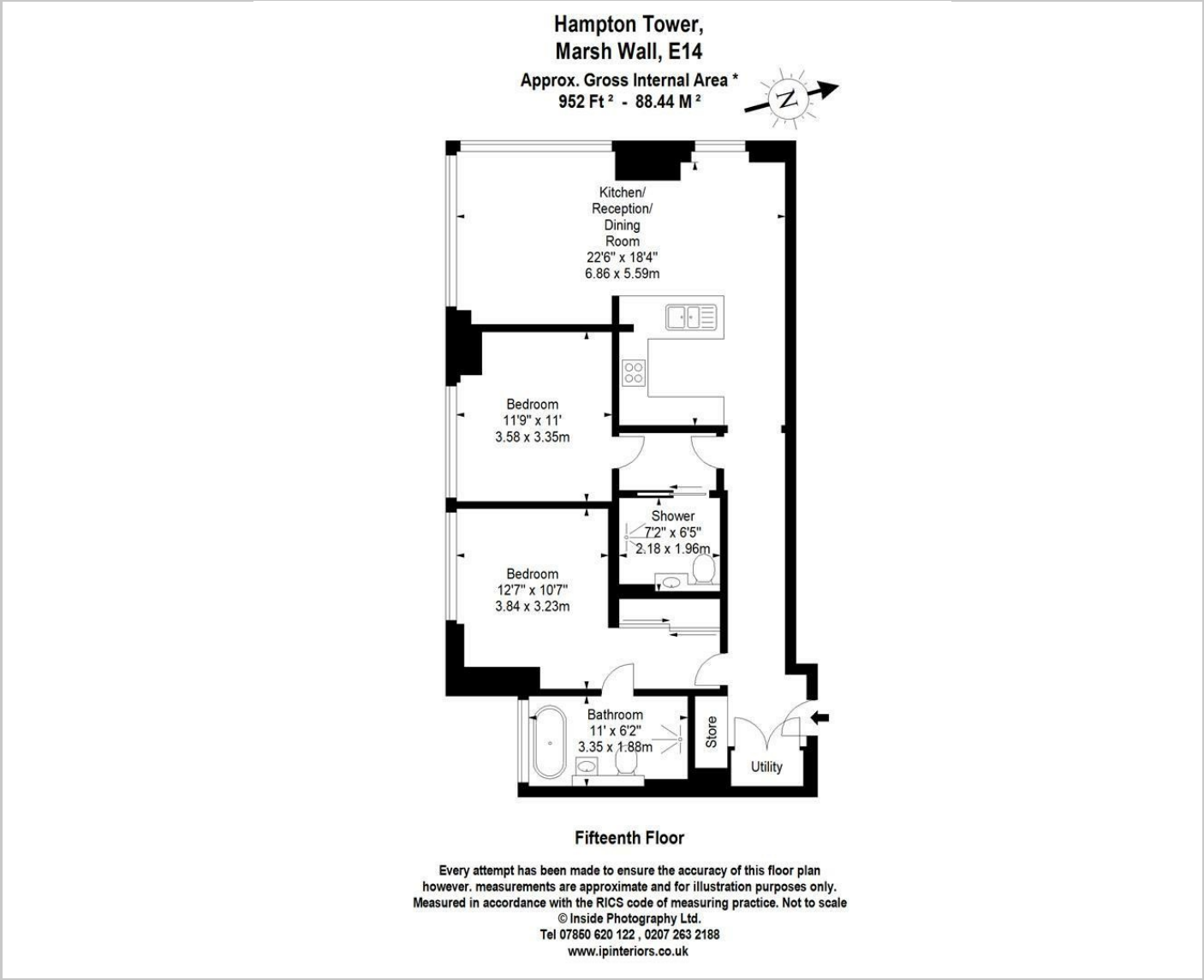
Description

Situation

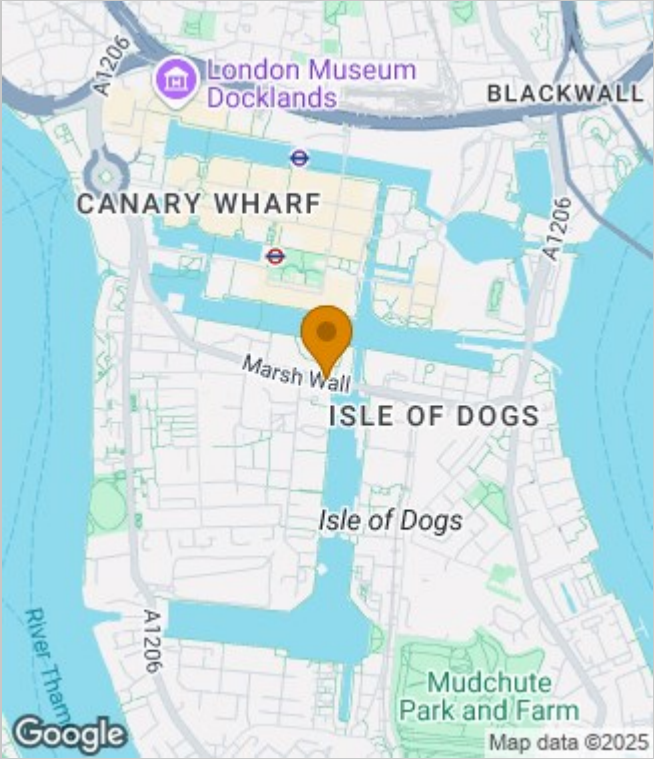
Furnished
Council Tax Band: F
Available: 4th June 2025



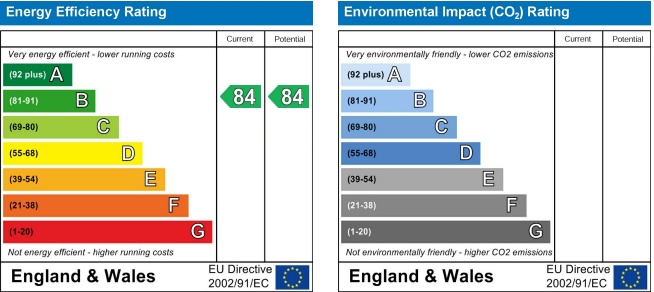
Floor Plans



Area Map



Energy Performance Graph



These particulars, whilst believed to be accurate are set out as a general outline only for guidance and do not constitute any part of an offer or contract. Intending purchasers should not rely on them as statements of representation of fact, but must satisfy themselves by inspection or otherwise as to their accuracy. No person in this firms employment has the authority to make or give any representation or warranty in respect of the property.