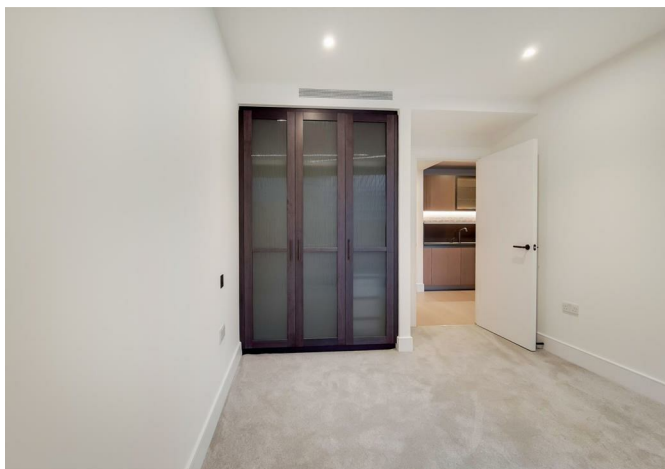
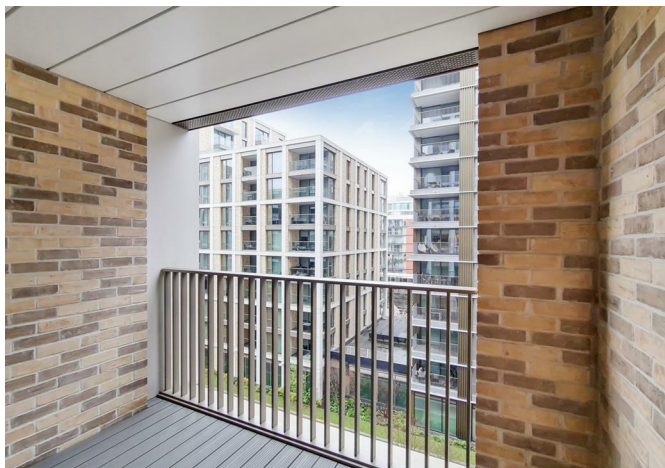




Apartment 44, 5, Salisbury House Palmer Road, London, SW11 4FX
£720,000



Apartment 44, 5, Salisbury House Palmer Road, London, SW11 4FX

£720,000

A stunning one-bedroom apartment in the prestigious Prince of Wales Drive development, perfectly located in Zone 1 with Battersea Park just moments away.

This sophisticated apartment features a bright open-plan reception room with wooden flooring, floor-to-ceiling windows, and access to a private balcony. The fully fitted kitchen includes integrated appliances and ample storage. The spacious bedroom benefits from fitted wardrobes and a large window allowing plenty of natural light, complemented by a luxury bathroom and separate cloakroom.

Residents enjoy access to world-class facilities including a pool, sauna, steam room, cinema, games room, residents' roof terrace, meeting rooms, co-working spaces, and 24-hour concierge. A privately run gym and dentist are also available on site (membership required).

Located opposite Battersea Park, a short walk from Chelsea and Battersea Power Station, this development offers a perfect blend of heritage and modern luxury with excellent transport links via the Northern Line extension and Battersea Park Overground.

Tenure: Leasehold – approx. 992 years remaining
Size: 566.83 sq ft

Description

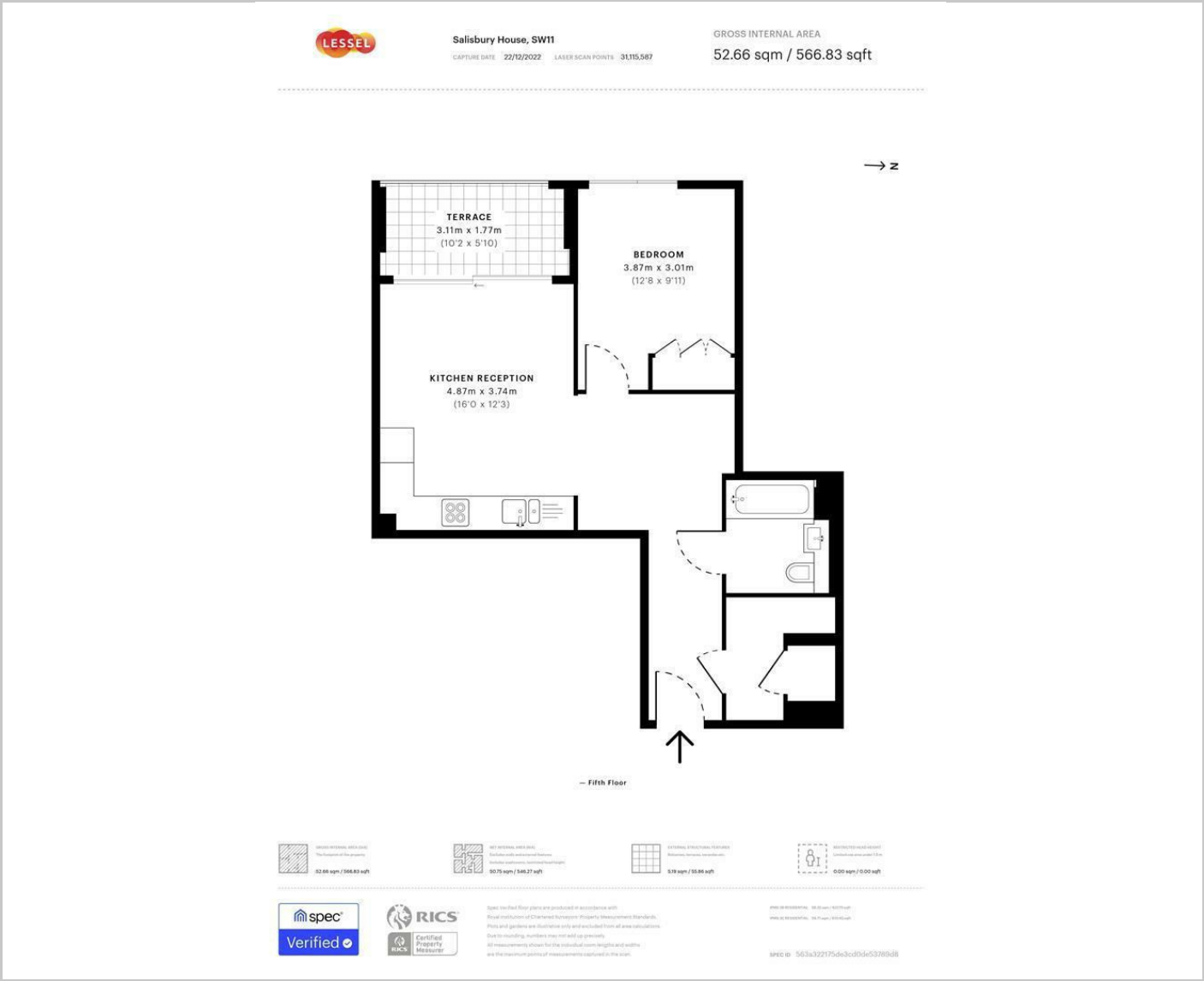


Situation

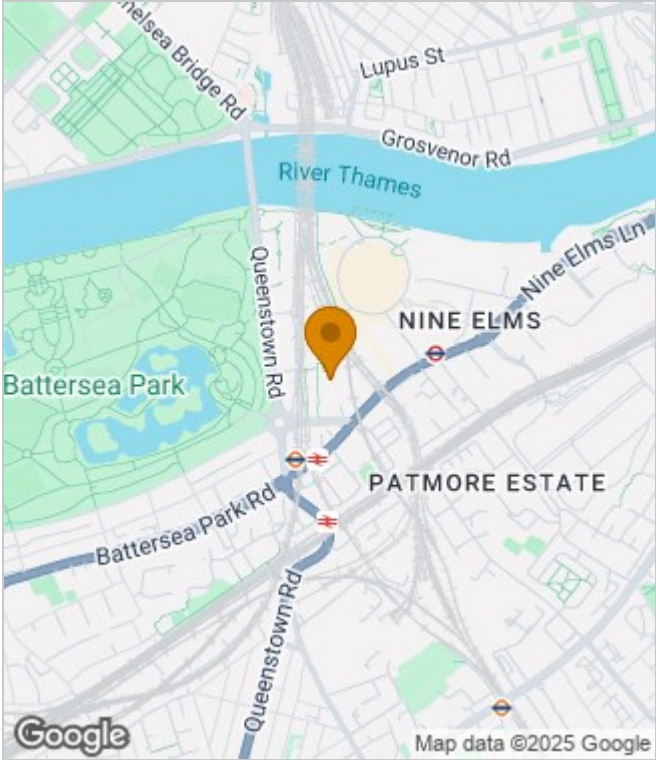


null
Council Tax Band:
Available:

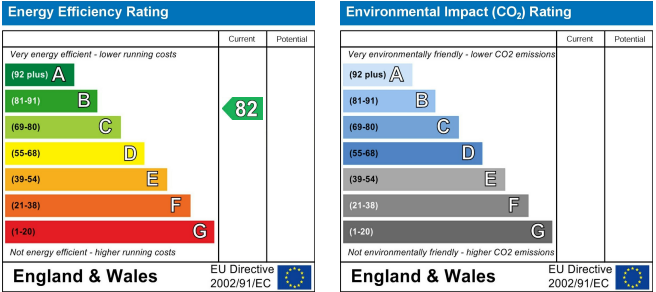
Floor Plans



Area Map



Energy Performance Graph



These particulars, whilst believed to be accurate are set out as a general outline only for guidance and do not constitute any part of an offer or contract. Intending purchasers should not rely on them as statements of representation of fact, but must satisfy themselves by inspection or otherwise as to their accuracy. No person in this firms employment has the authority to make or give any representation or warranty in respect of the property.