



Flat 1102 Roosevelt Tower 18 Williamsburg Plaza, London, Greater London, E14 9NW

£725 Per Week



Flat 1102 Roosevelt Tower 18 Williamsburg Plaza, London, Greater London, E14

£725 Per Week

Situated approximately 0.2 miles from the Blackwall DLR station.

The Williamsburg Plaza development and located on the eleventh floor, the apartment offers stunning views across to the City. On arriving, you are greeted by a spacious living room and open-plan kitchen. From the living room there are sliding doors taking you out onto a sizeable balcony.

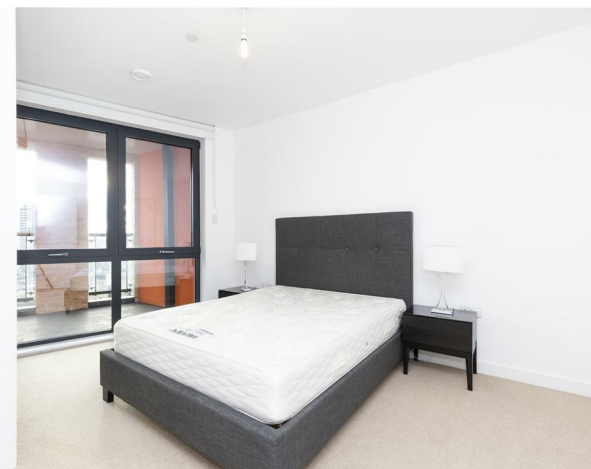
The master bedroom benefits from built-in wardrobes and en-suite, whilst there is a second bedroom with separate bathroom. Both bedrooms benefit from window access onto the balcony

Canary Wharf and the retail district are within easy access, also the A13 and Limehouse Link roads

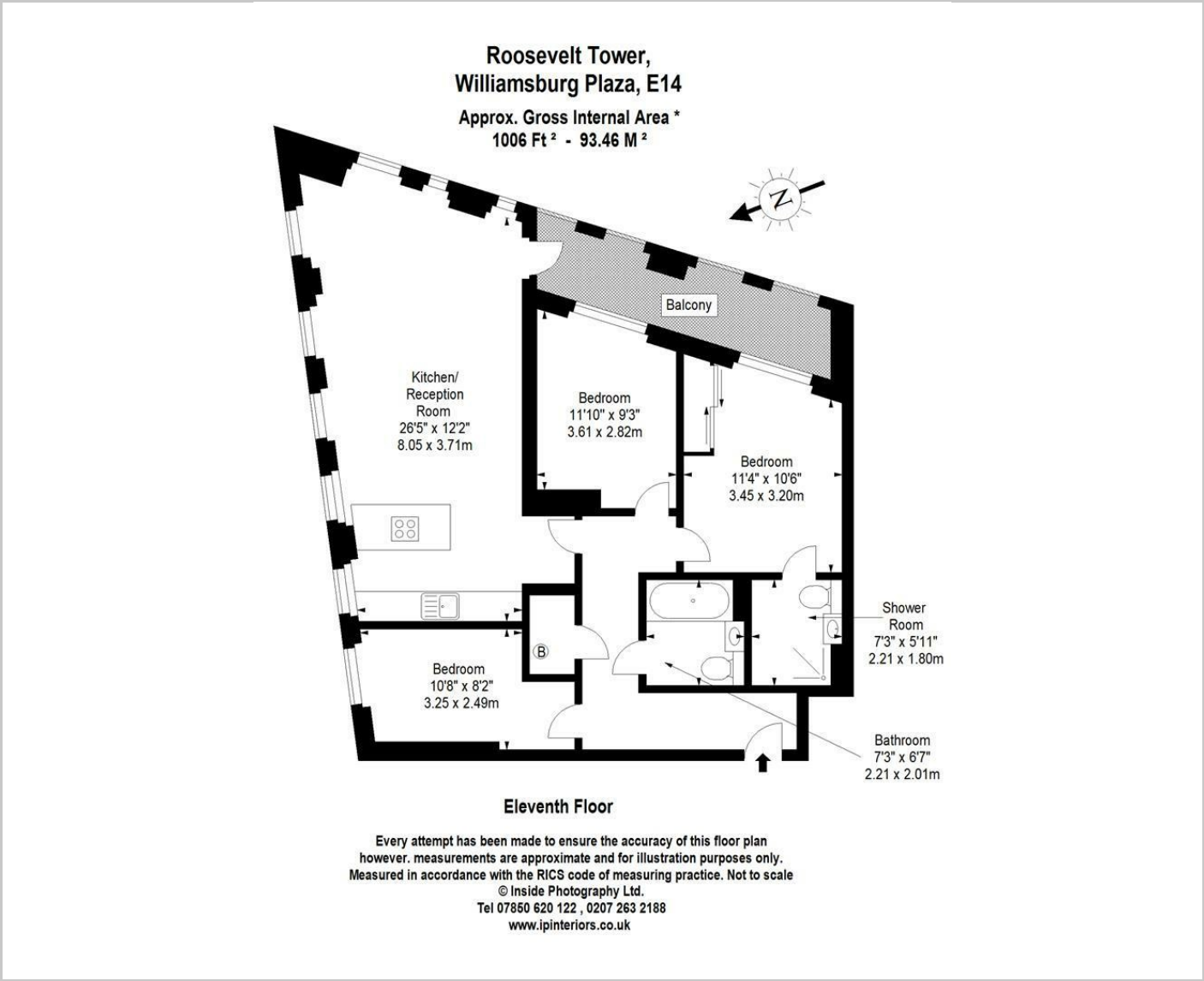
Description

Situation

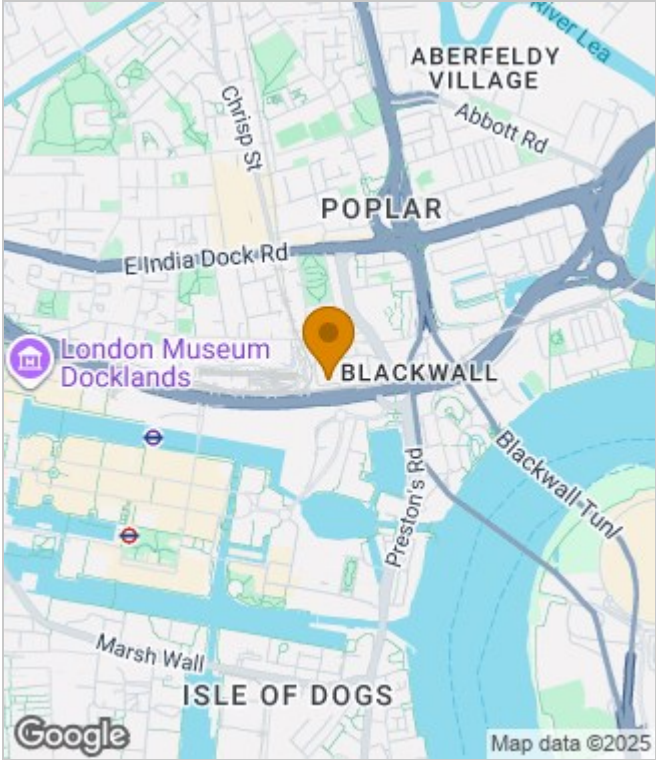
Furnished
Council Tax Band: F
Available: 15th January 2026



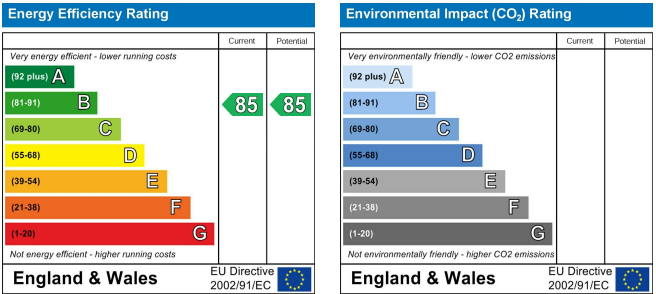
Floor Plans



Area Map



Energy Performance Graph



These particulars, whilst believed to be accurate are set out as a general outline only for guidance and do not constitute any part of an offer or contract. Intending purchasers should not rely on them as statements of representation of fact, but must satisfy themselves by inspection or otherwise as to their accuracy. No person in this firms employment has the authority to make or give any representation or warranty in respect of the property.