



Apartment 13 Roman House Wood Street, London, EC2Y 5AG  
£950,000





## Apartment 13 Roman House Wood Street, London, EC2Y 5AG

**£950,000**

A stunning two-bedroom apartment is seated on the ground floor in development-Roman House, City of London. A landmark building redesigned and refurbished for City living.

It represents a new modern urban quarter in the city with its recognizable delicate features by Berkeley Homes. his luxury apartment comes with a private wrap around terrace.

Total 8 floors, Roman House offers luxury and relaxing life styles. The development benefits from 24hr concierge service, resident gym. This luxury residence offers a vast amount of entertaining space complete with floor to ceiling glazing and a private wrap around terrace. The apartment boasts two spacious bedrooms complete with en-suite bathrooms and large dressing areas. From the moment you enter, the long impressive hallway with glazed back-lit wine storage confronts you.

To the rear of the building you have the fascinating St. Alphage Gardens containing original remains of the Roman London Wall. Close at hand is Smithfield's an area that is seeing a huge regeneration. Barbican tube station (on the Circle, Hammersmith & City and Metropolitan lines), Moorgate (on the Northern line), St Paul's (on the Central line), Mansion House (on the District line) tube stations, and the new Crossrail Station Farringdon Station (due 2018) each within a short walking distance. Waitrose, Marks & Spencer and Tesco are close at hand. Within easy commuting distance from world-renowned Universities and Colleges.

## Description

An exceptional 2-bedroom, 2-bathroom luxury apartment set within the landmark Roman House development by Berkeley Homes, located right in the heart of the City of London. Once the original show apartment, this rare ground-floor residence combines striking modern design with timeless heritage — set beside the historic Roman Wall.

Offering an expansive layout with 3.2-metre ceilings, a semi-open plan kitchen, and premium finishes throughout, this home is ideal for professionals, pied-à-terre buyers or investors seeking a prime EC2 address with excellent transport links.

### Area overview:

Perfectly positioned between Moorgate and Barbican stations, Roman House places you within walking distance of the Barbican Centre, St Paul's Cathedral, and the City's major financial institutions. Surrounded by premium restaurants, boutique shops, and cultural landmarks, this address offers true City living at its finest.

## Situation

Contact Lessel today to arrange a private viewing of this beautifully appointed apartment in one of the Square Mile's most sought-after developments.



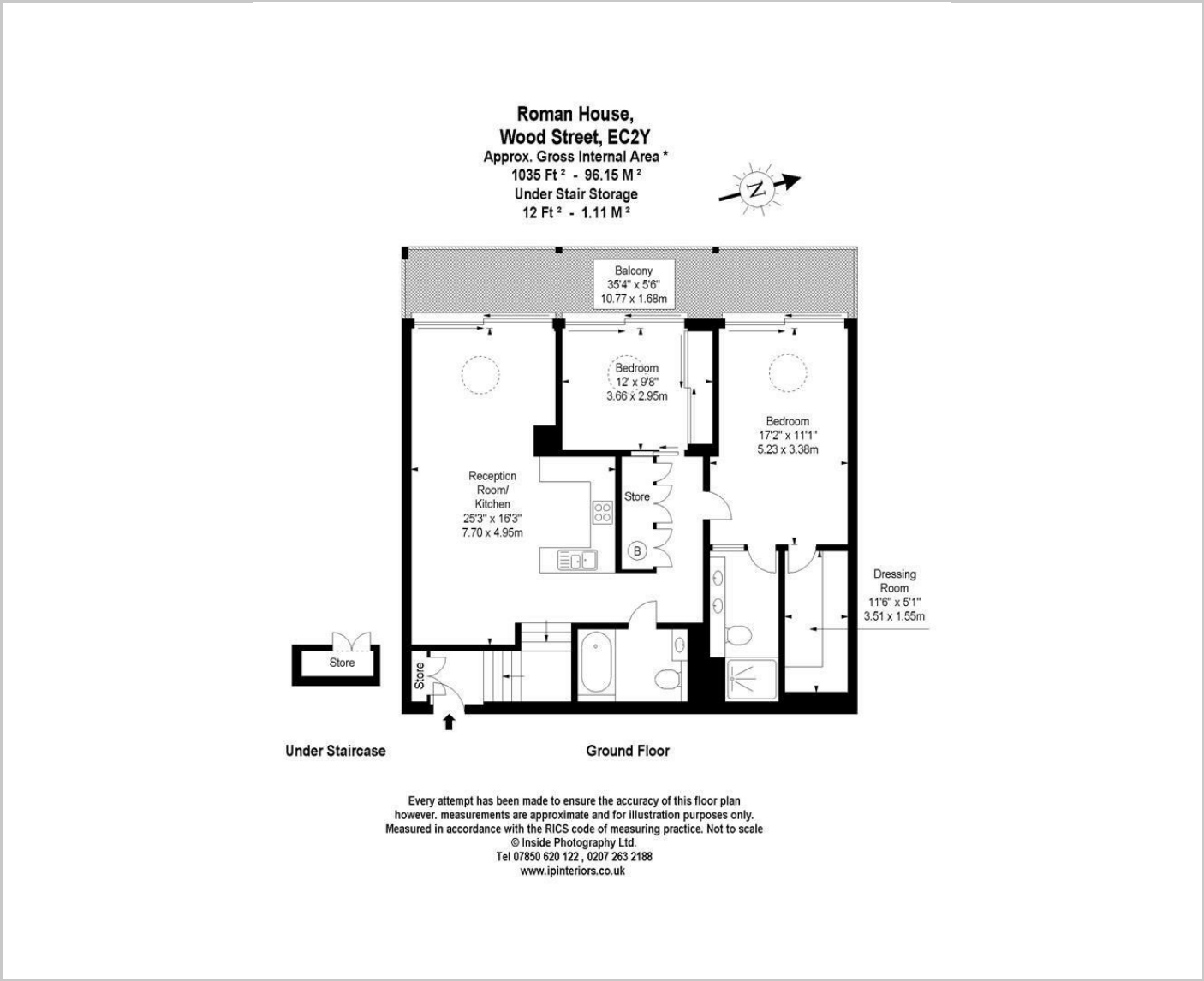
null

Council Tax Band:

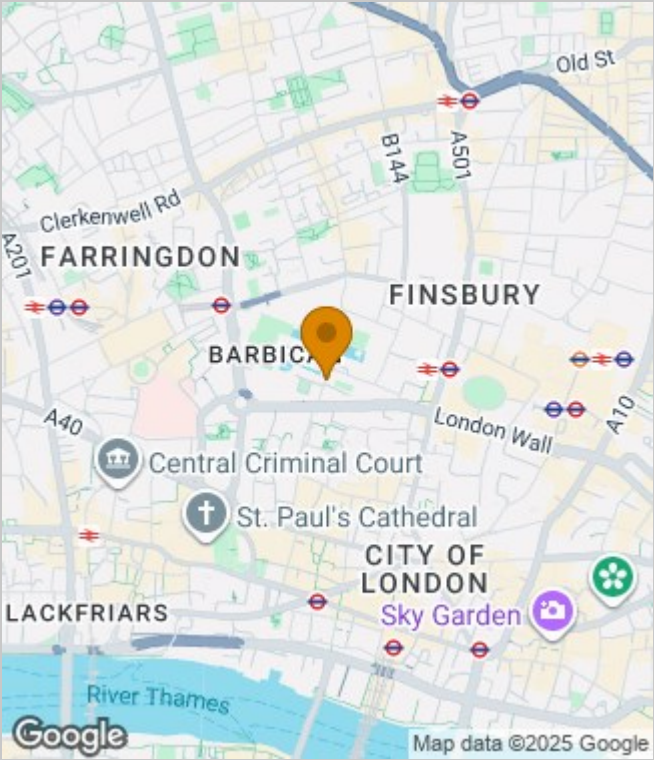
Available:



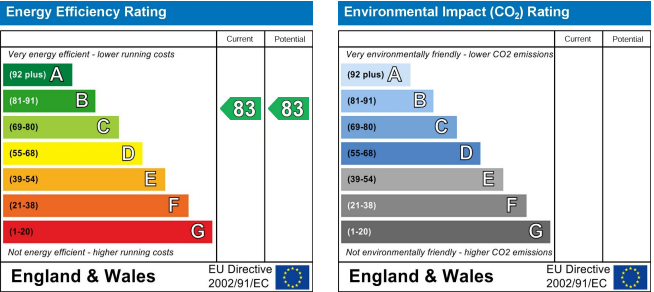
Floor Plans



Area Map



Energy Performance Graph



These particulars, whilst believed to be accurate are set out as a general outline only for guidance and do not constitute any part of an offer or contract. Intending purchasers should not rely on them as statements of representation of fact, but must satisfy themselves by inspection or otherwise as to their accuracy. No person in this firms employment has the authority to make or give any representation or warranty in respect of the property.