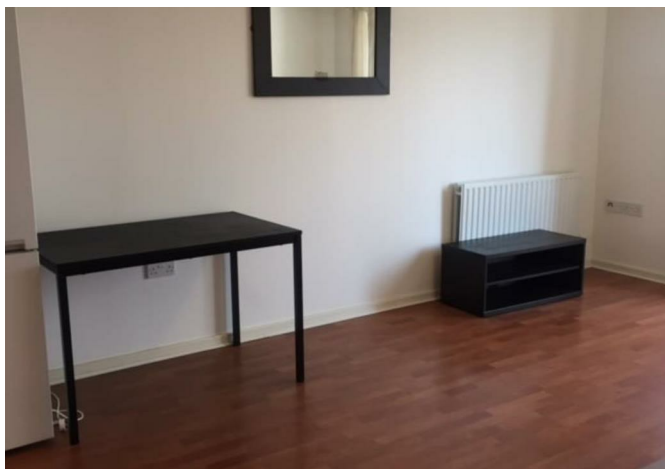




Flat 14, 2, Spice Court Ruby Way, London, NW9 5XG
£1,550 Per Month



Flat 14, 2, Spice Court Ruby Way, London, NW9 5XG

£1,550 Per Month

Description

Situation



Not specified

Council Tax Band:

Available: 29th September 2025

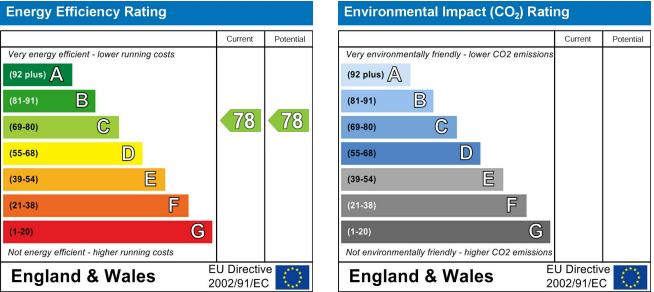
Floor Plans



Area Map



Energy Performance Graph



These particulars, whilst believed to be accurate are set out as a general outline only for guidance and do not constitute any part of an offer or contract. Intending purchasers should not rely on them as statements of representation of fact, but must satisfy themselves by inspection or otherwise as to their accuracy. No person in this firms employment has the authority to make or give any representation or warranty in respect of the property.