



405 Eastern Building 2 Triptych Place, London, SE1 9RD  
**£750 Per Week**



405 Eastern Building 2 Triptych Place, London, SE1 9RD

**£750 Per Week**

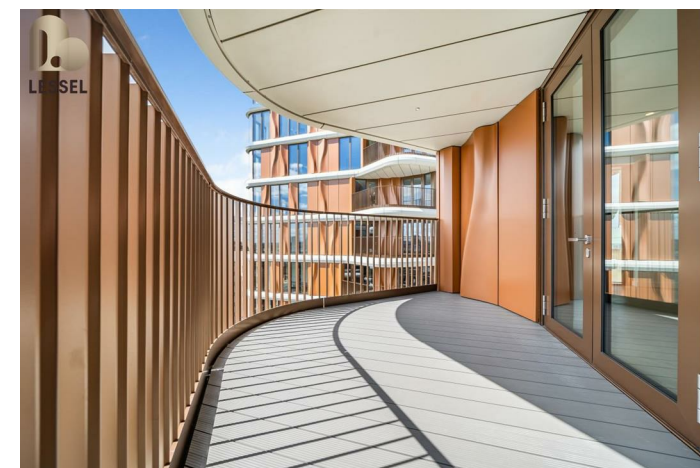
Triptych is a new mixed-use luxury development designed by renowned London architects Squire & Partners on the Southbank of London. Undulating curves of the façade present a fresh and distinct contrast to the homogeneous silhouette of symmetric towers marking London's skyline. The residences consist of two towers, 14 and 18 stories respectively, with all 169 open-plan, light-filled apartments uniquely benefit from private terraces with stunning views.



## Description



## Situation

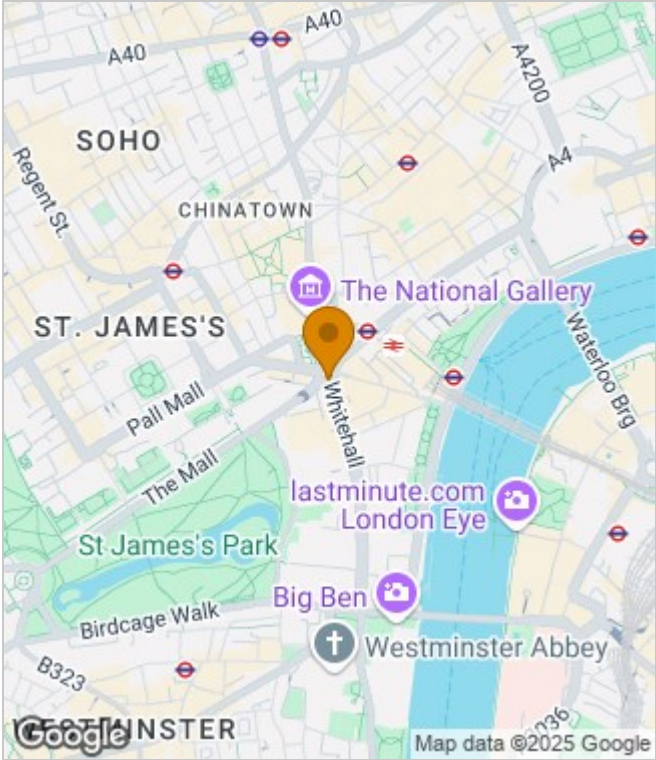


Furnished/unfurnished  
Council Tax Band:  
Available: 23rd June 2025

Floor Plans



Area Map



Energy Performance Graph



These particulars, whilst believed to be accurate are set out as a general outline only for guidance and do not constitute any part of an offer or contract. Intending purchasers should not rely on them as statements of representation of fact, but must satisfy themselves by inspection or otherwise as to their accuracy. No person in this firms employment has the authority to make or give any representation or warranty in respect of the property.