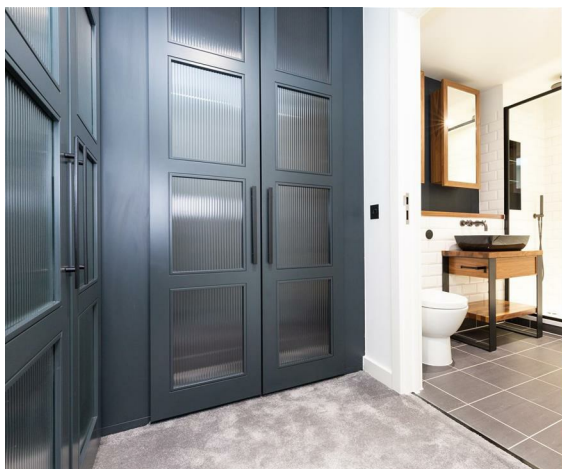
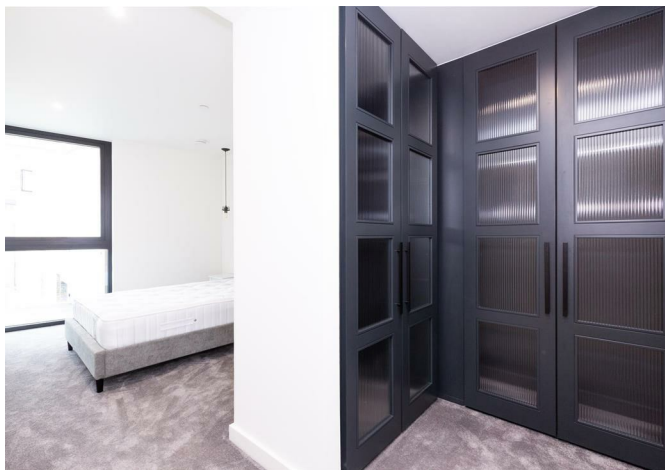
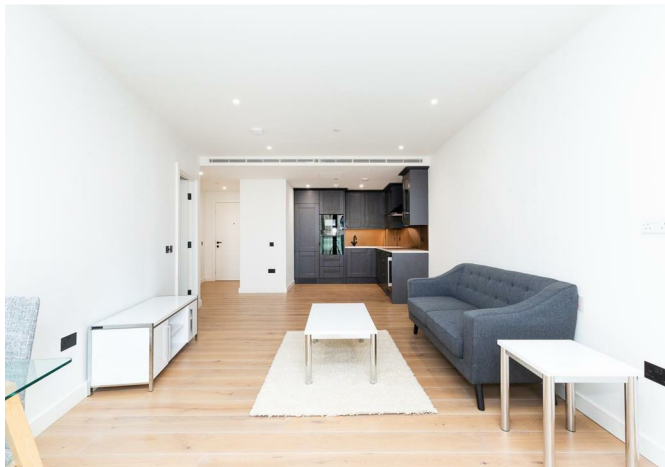




Apartment 121 1 Emery Way, London, E1W 2AS  
**£635 Per Week**



## Apartment 121 1 Emery Way, London, E1W 2AS

**£635 Per Week**

One bedroom apartment in London Dock

London Dock by St George, situated in the heart of Wapping, just moments from Tower Bridge, the Tower of London, St Katharine Docks and the City. This exciting new destination, a thriving new cultural quarter, featuring a magnificent choreographed central water feature and the finest selection of high quality new homes.

Emery Wharf is an exciting new destination and a thriving cultural quarter boasting luxury facilities including a swimming pool, state-of-the-art gym, virtual golf, squash court, sauna, steam room and treatment room. The residents' lounge at Emery Wharf offers a 24 hour concierge service. In addition to that, the development benefits from two private roof gardens affording stunning views across London, and the proximity to extensive landscaping at London Docks including the magnificent central water feature in the airy Gauging Square.

The classic plan design layout has been used for this apartment type. The lounge/ kitchen/ dining room forms the main living area and features large floor to ceiling glazing maximizing the amount of daylight flooding into the apartment. The bedroom extends onto a smart and generous wardrobe space and the en suite bathroom.



## Description

City Views

## Situation

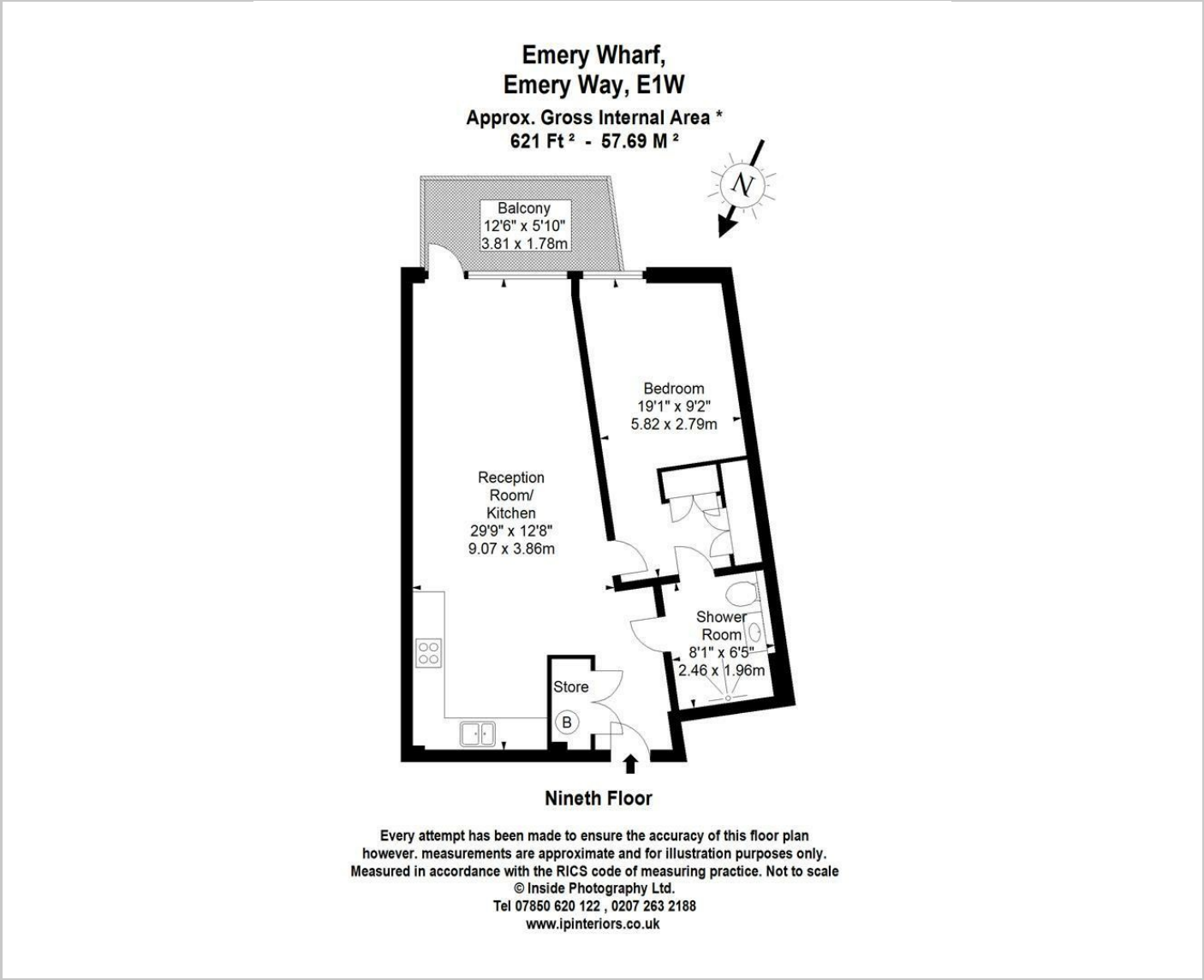
Furnished

Council Tax Band: F

Available: 23rd June 2025



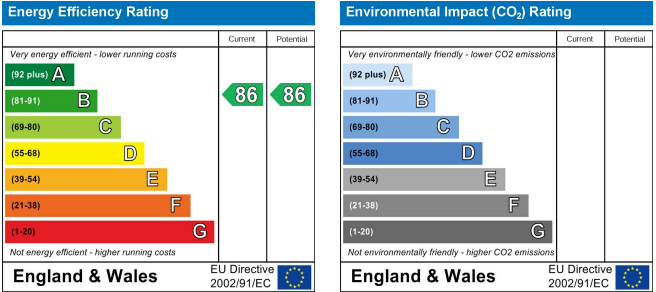
Floor Plans



Area Map



Energy Performance Graph



These particulars, whilst believed to be accurate are set out as a general outline only for guidance and do not constitute any part of an offer or contract. Intending purchasers should not rely on them as statements of representation of fact, but must satisfy themselves by inspection or otherwise as to their accuracy. No person in this firms employment has the authority to make or give any representation or warranty in respect of the property.