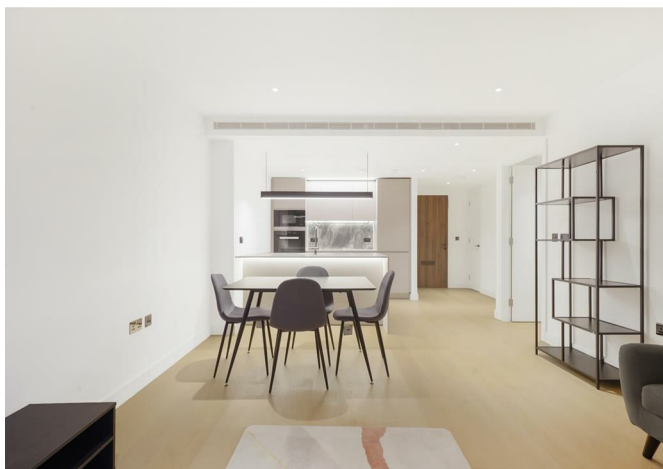




32 Belvedere Row Apartments Fountain Park Way, London, W12 7JF
£615 Per Week



32 Belvedere Row Apartments Fountain Park Way, London, W12 7JF

£615 Per Week

Welcome to Belvedere Row Apartments, a charming flat located in the vibrant area of White City Living, W12. This delightful property offers a perfect blend of comfort and modern living, making it an ideal choice for individuals or couples seeking a stylish home.

Spanning an impressive 561 square feet, this flat features a well-appointed reception room that provides a welcoming space for relaxation and entertainment. The bedroom is thoughtfully designed to ensure a peaceful retreat, while the bathroom is equipped with contemporary fixtures, offering both convenience and style.

The location of this property is particularly appealing, as it is situated in a thriving community with excellent transport links and a variety of local amenities. Residents can enjoy easy access to shops, restaurants, and recreational facilities, all within a short distance.

Belvedere Row Apartments is not just a place to live; it is a lifestyle choice that combines comfort, convenience, and a sense of community. Whether you are looking to invest or find your next home, this flat presents a wonderful opportunity to experience the best of White City Living. Do not miss the chance to make this charming property your own.

Description

Situation

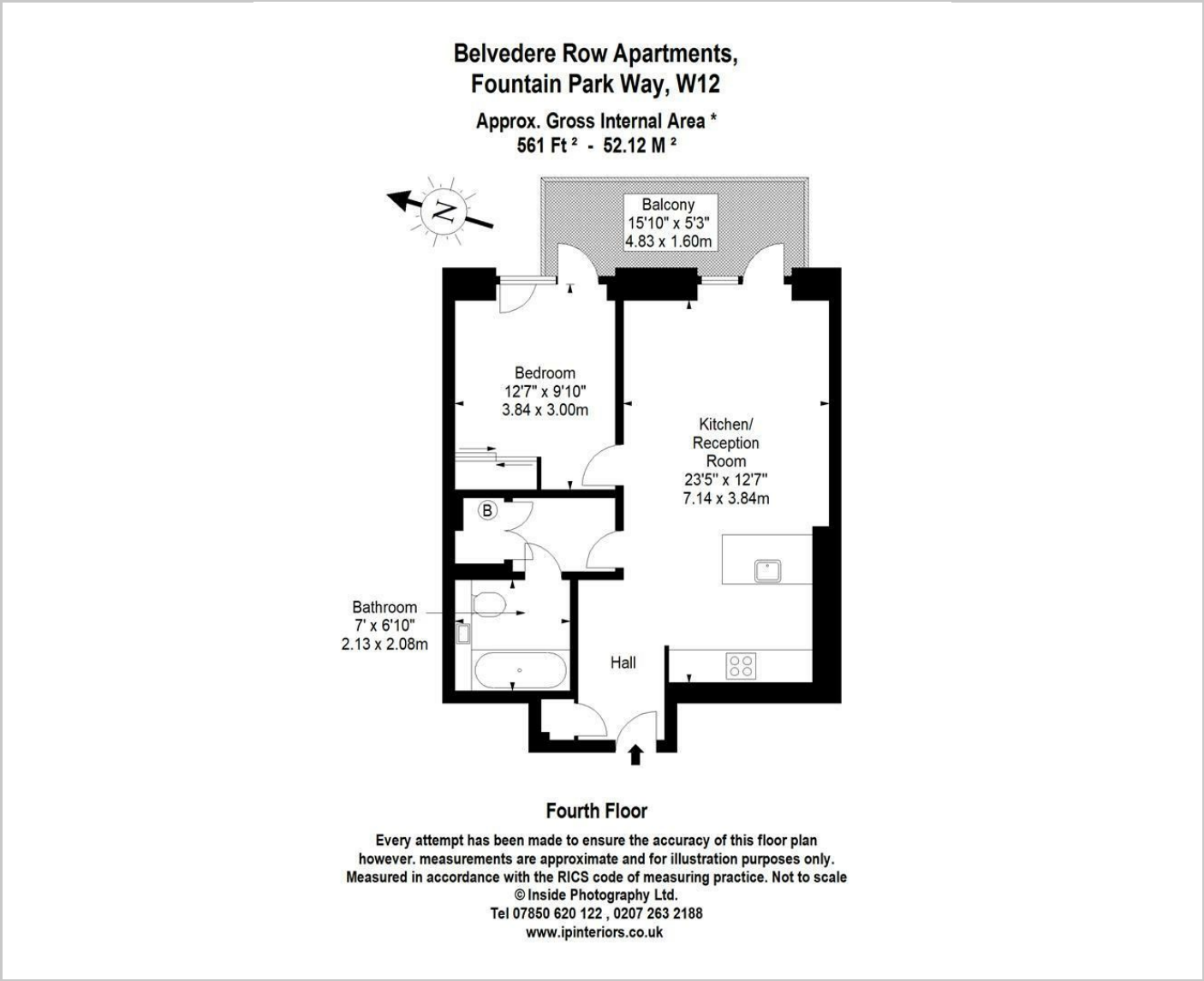
Furnished

Council Tax Band:

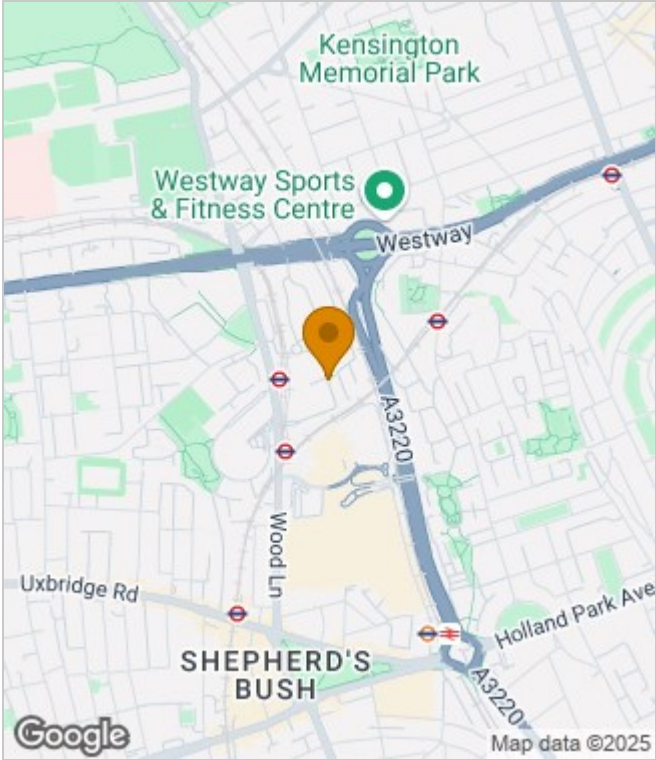
Available: 26th May 2025



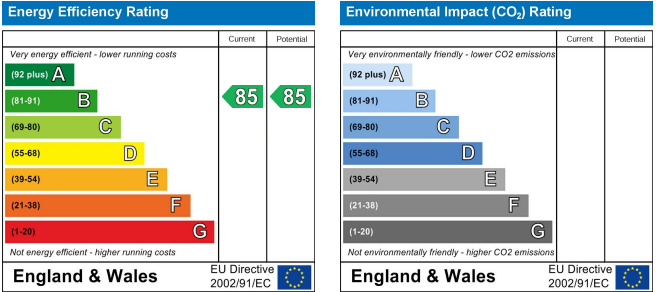
Floor Plans



Area Map



Energy Performance Graph



These particulars, whilst believed to be accurate are set out as a general outline only for guidance and do not constitute any part of an offer or contract. Intending purchasers should not rely on them as statements of representation of fact, but must satisfy themselves by inspection or otherwise as to their accuracy. No person in this firms employment has the authority to make or give any representation or warranty in respect of the property.