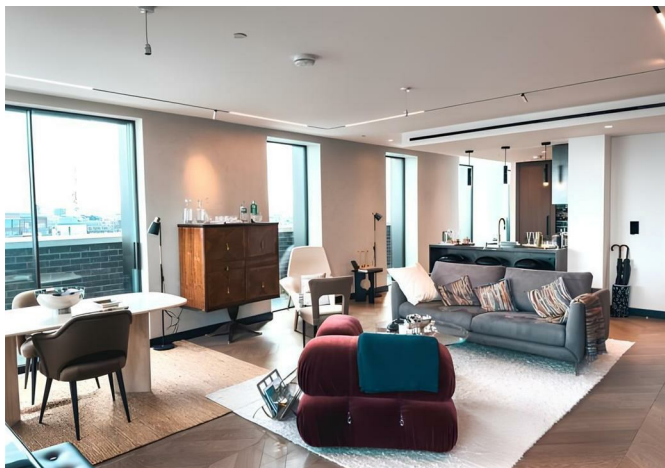




Apartment A71, 101-103 Cleveland Street, London, W1T 6FA
£3,000 Per Week



Apartment A71, 101-103 Cleveland Street, London, W1T 6FA

£3,000 Per Week

This exquisite 2-bedroom penthouse apartment on the 9th floor of 101 on Cleveland. With over 1,266 sq ft of lateral space, this chic and contemporary residence offers an unparalleled lifestyle in one of London's most sought-after neighbourhoods.

As you step inside, you'll be greeted by an expansive open-plan living area, featuring high ceilings and large windows that flood the space with natural light. The living room seamlessly flows into the dining area and kitchen, creating the perfect setting for entertaining guests or relaxing with family. The contemporary kitchen is a chef's dream, equipped with premium Gaggenau appliances and sleek, modern finishes.

The apartment boasts two serene bedrooms, each a private retreat from the bustling city below. The master bedroom is a true oasis, with warm timber floors, Italian-designed wardrobes, and a luxurious en-suite bathroom. The second bedroom is equally impressive, offering ample space and its own beautifully appointed en-suite.

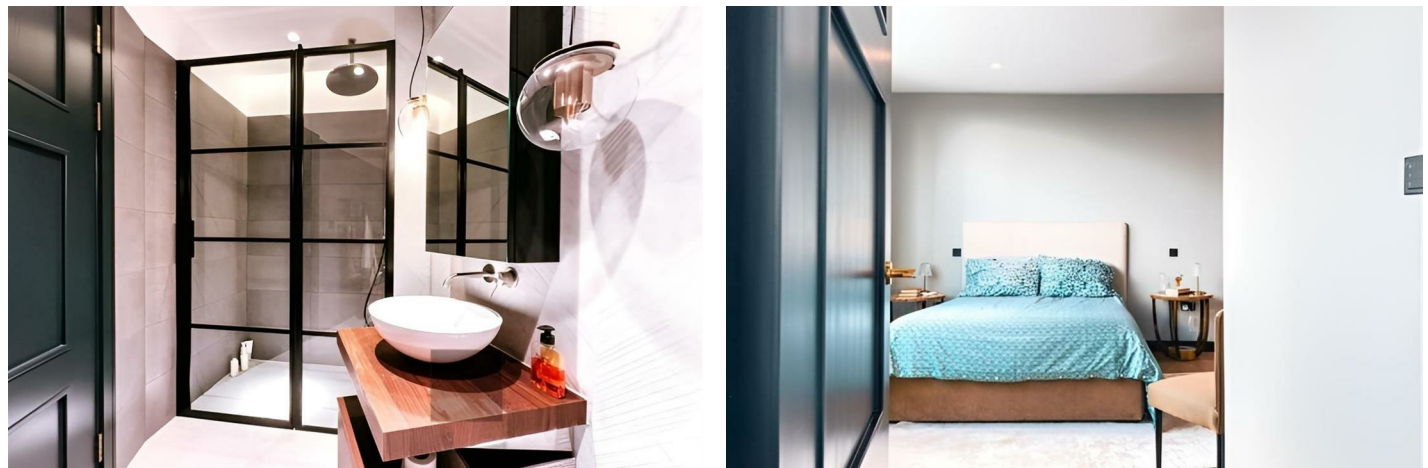
One of the most stunning features of this penthouse is the private terrace, which offers breath taking views over the iconic BT Tower and the London skyline. This outdoor space is perfect for alfresco dining, hosting intimate gatherings, or simply enjoying a moment of tranquillity amidst the vibrant city.

Residents of 101 on Cleveland also have access to the exclusive Club 101 amenities, including a 24-hour concierge, residents' lounge, screening room, private dining room and bar, business suite, gym, and

Description



Situation



Furnished
Council Tax Band: G
Available: 14th April 2025

Floor Plans

Master Floorplan Image

A-9-2 2 BED

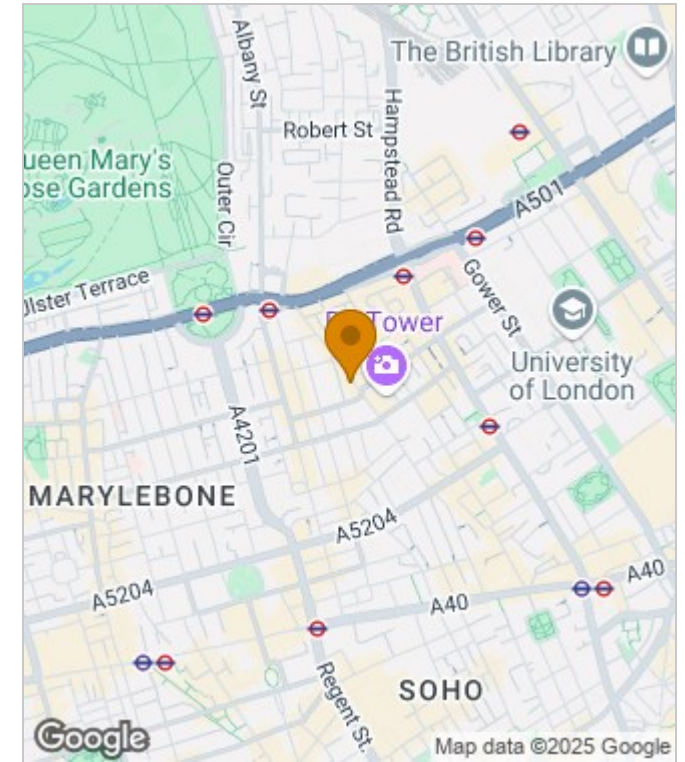
PENTHOUSE 2

TYPICAL AREA 117.6 SQ M / 1266 SQ FT

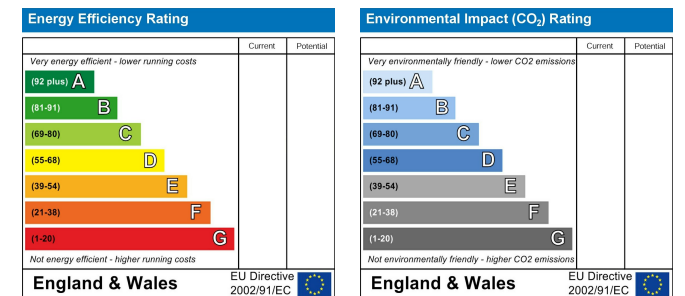
Living/Kitchen/Dining	10.8 x 6.4m / 35'5" X 20'12"
Master Bedroom	3.2 x 2.9m / 10'8" X 9'7"
Master En Suite	4.1 x 1.8m / 13'4" X 5'10"
Dressing Room	2.4 x 2.3m / 7'11" X 7'6"
Bedroom 2	3.8 x 3.6m / 12'6" X 11'9"
En Suite 2	3.2 x 1.7m / 10'5" X 5'7"
Bathroom	1.7 x 1.2m / 5'7" X 3'11"
Terrace 1	38.3m SQ M / 412 SQ FT
Terrace 2	33.3m SQ M / 358 SQ FT

[View in fullscreen](#)

Area Map



Energy Performance Graph



These particulars, whilst believed to be accurate are set out as a general outline only for guidance and do not constitute any part of an offer or contract. Intending purchasers should not rely on them as statements of representation of fact, but must satisfy themselves by inspection or otherwise as to their accuracy. No person in this firm's employment has the authority to make or give any representation or warranty in respect of the property.