



1004 Galleria House 12B Western Gateway, London, E16 1DA

£630 Per Week



1004 Galleria House 12B Western Gateway, London, E16 1DA

£630 Per Week

Immediately east of Canary Wharf, the Royal Docks is emerging as a new hub for business and culture in London. Here, lives the green heart of a vibrant city, designed around health and wellbeing with landscaped space at its heart.

Step beyond the gates of home and explore the waterside buzz on your doorstep. Restaurants, cafés, bars, entertainment, sport and culture - the Royal Docks really does have it all.

Wakeup Docklands is London's only wakeboard and paddleboard centre, and is located right on your doorstep on Royal Docks. Plus, the Emirates Air Line is a cable car between Greenwich Peninsula and the Royal Docks, offering panoramic views over the River Thames, and is a must-do experience for anyone visiting the East of the city.

For food and drink options, you're spoilt for choice. The Lands End Restaurant on the Sunborn Dine, a favourite for City workers, is located on the deck of a luxurious superyacht, permanently moored at Royal Dock.

Check out the ICON Outlet at The O2 where you can shop over 60 premium fashion and lifestyle brands.

Even closer to home, the ExCeL London is an international events centre hosting over 300 events per year and has more than 20 restaurants on site. There is sure to be something on their calendar that takes your

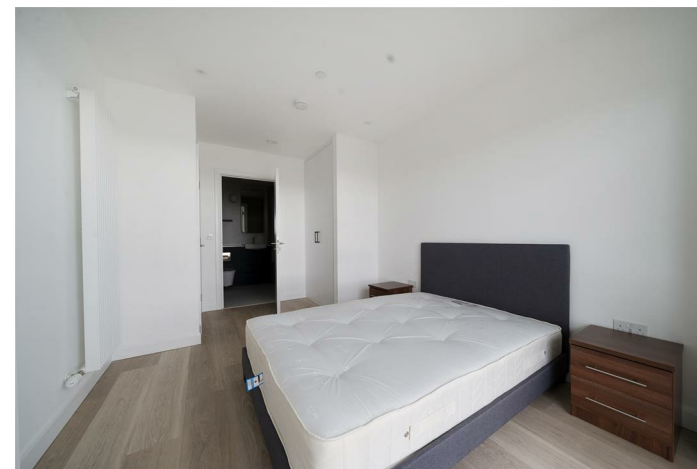
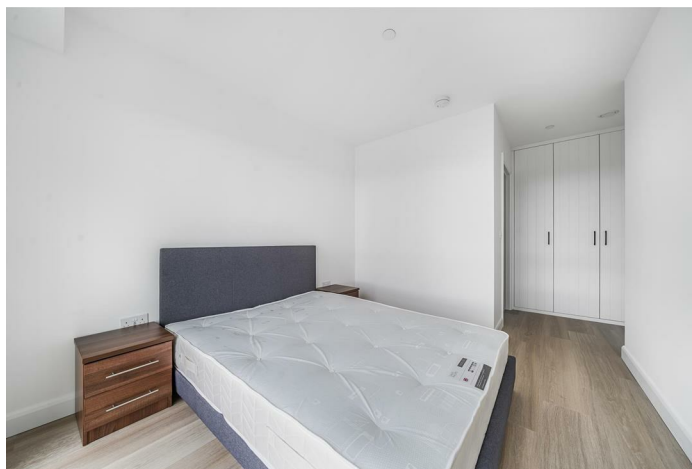
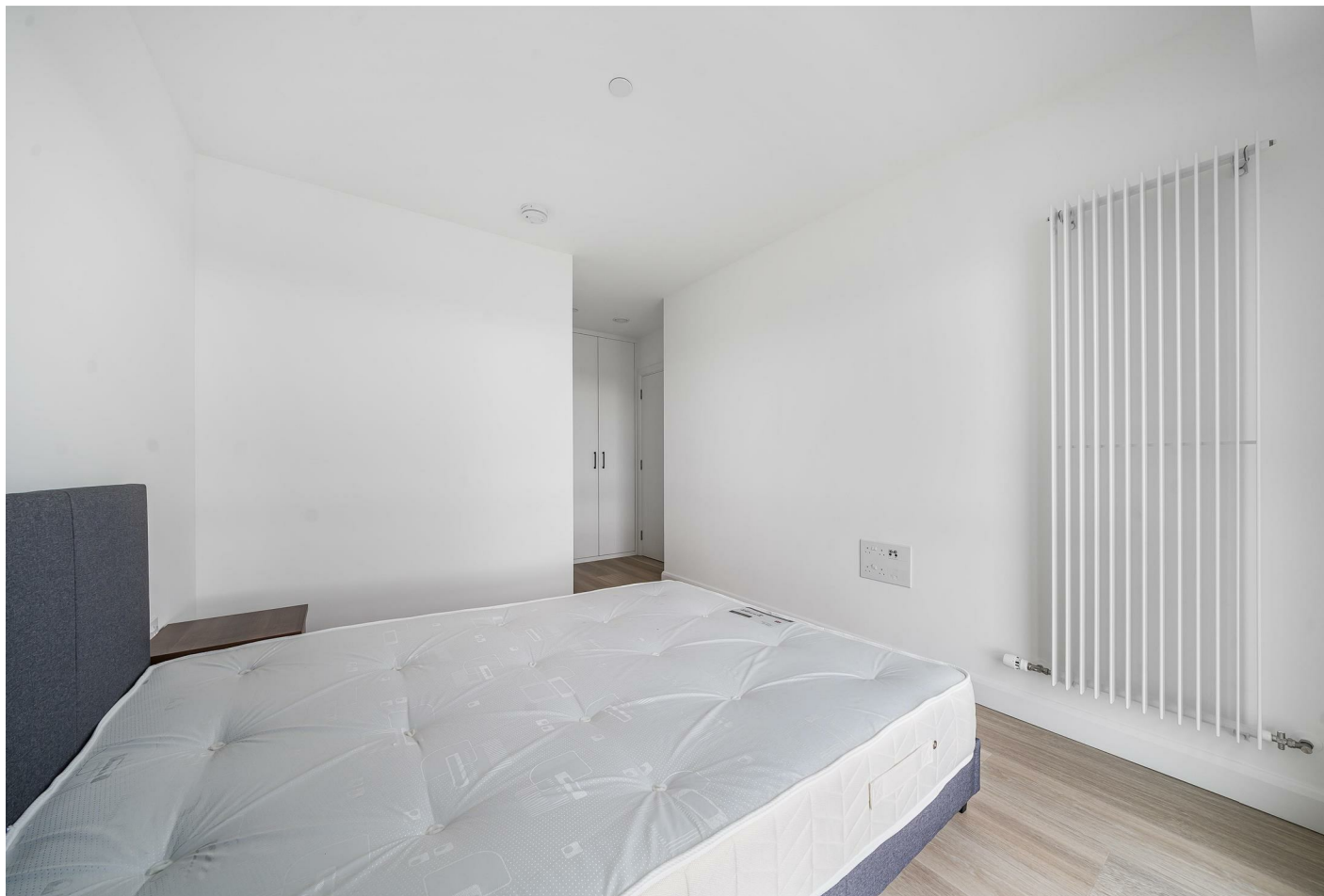
Description

Situation

Furnished

Council Tax Band: D

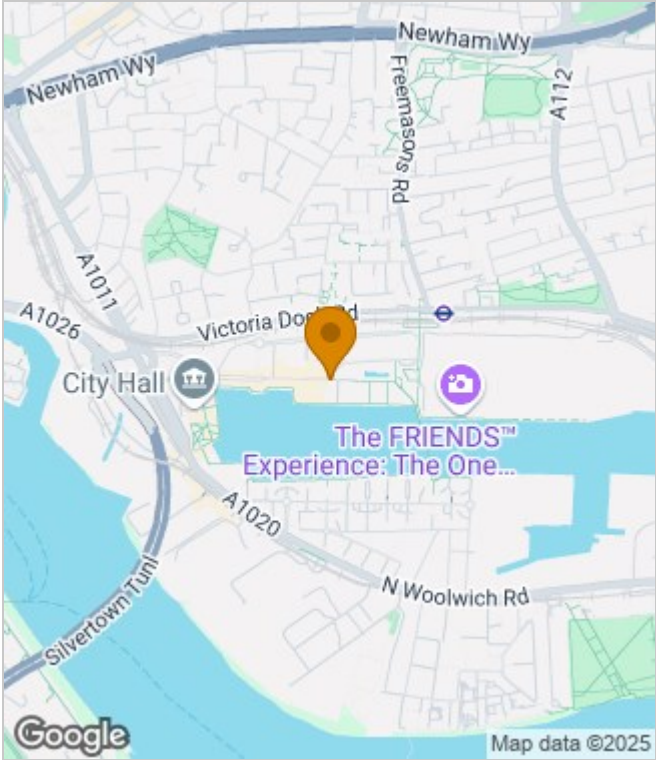
Available: 8th June 2025



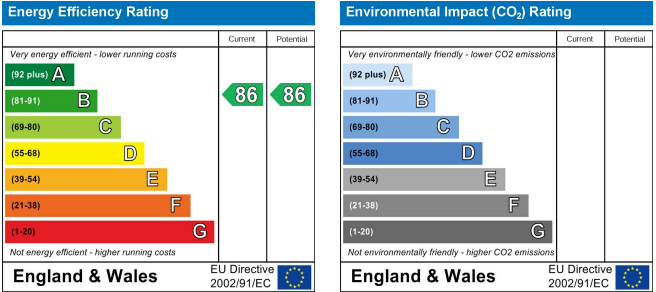
Floor Plans



Area Map



Energy Performance Graph



These particulars, whilst believed to be accurate are set out as a general outline only for guidance and do not constitute any part of an offer or contract. Intending purchasers should not rely on them as statements of representation of fact, but must satisfy themselves by inspection or otherwise as to their accuracy. No person in this firms employment has the authority to make or give any representation or warranty in respect of the property.