

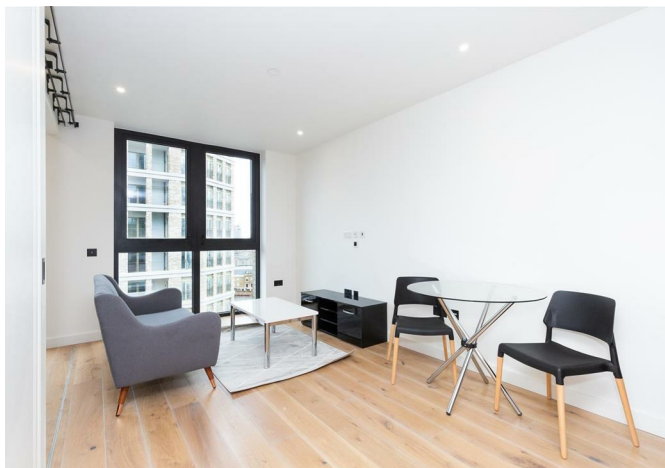


Flat 125 1 Emery Way, London, E1W 2AS

£570,000

LONDON DOCK





## Flat 125 1 Emery Way, London, E1W 2AS

**£570,000**

This studio apartment is located at Emery Wharf, part of the prestigious London Dock by St George. Set in the vibrant area of Wapping, it's just a few minutes from Tower Bridge, the Tower of London, St Katharine Docks, and the City. This development offers a perfect blend of modern living, convenience, and a lively new cultural quarter.

The apartment features a well-planned open layout with clearly defined kitchen, living, and bedroom areas. The sliding screen separates the sleeping area from the living space, providing privacy while maintaining an open and spacious feel. Both areas benefit from floor-to-ceiling glazing, filling the space with natural light and offering stunning city views.

The kitchen is fully fitted with premium integrated appliances. Sleek cabinetry and stylish finishes create a modern, practical space. The bathroom is fitted with high-quality fixtures and a clean, contemporary design. The bedroom area also includes built-in wardrobe space, making it easy to keep the apartment tidy and organised.

Residents enjoy a range of exclusive facilities, including: 24-hour concierge and security, Residents' lounge and workspaces, gym, swimming pool, sauna, steam room, and treatment room. There are other amenities such as Virtual golf, squash court, private cinema, and roof gardens with panoramic views across London.

This studio is ideal for anyone looking for a stylish, comfortable home in a well-connected, central London location.

## Description

Modern Open Plan Living

## Situation

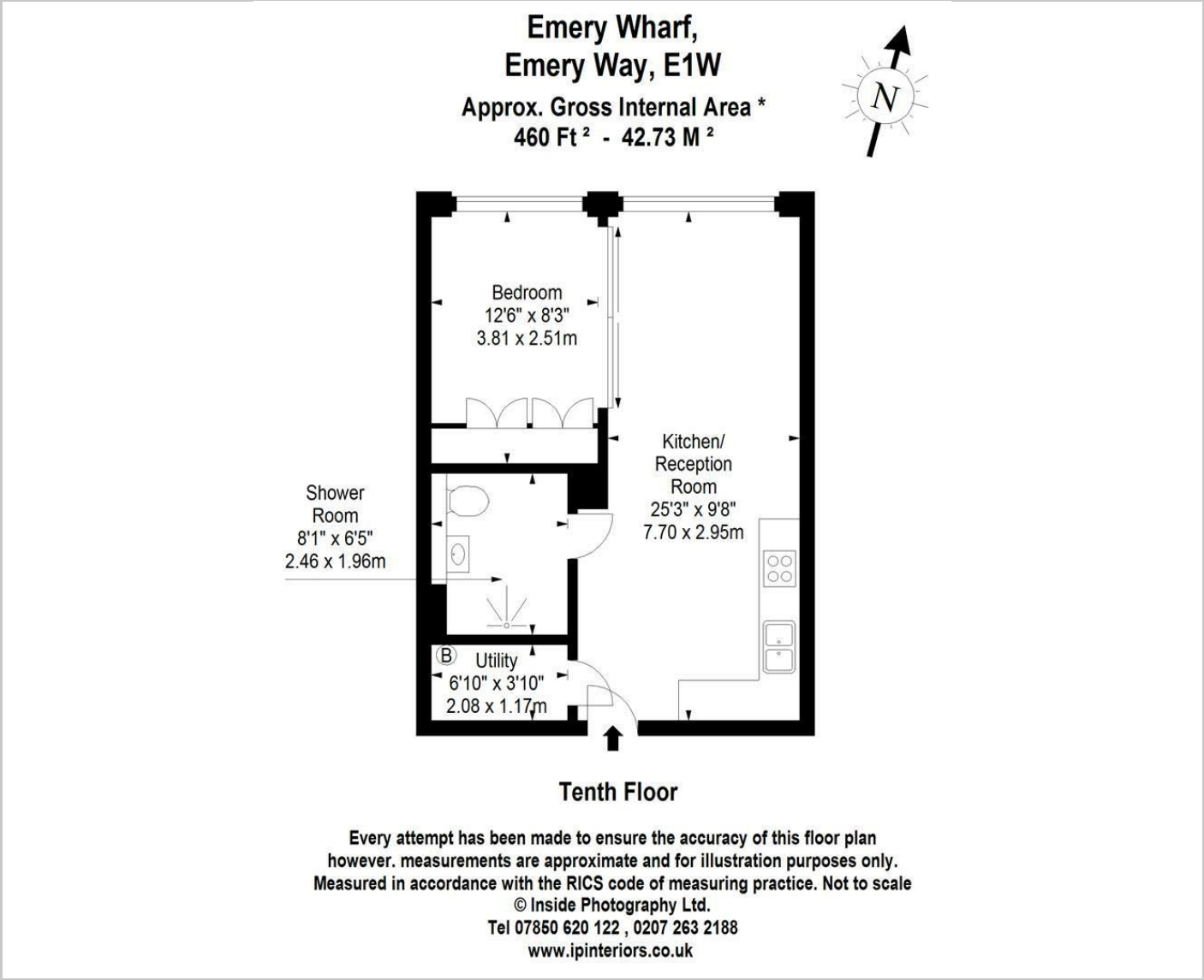


null  
Council Tax Band: F  
Available:





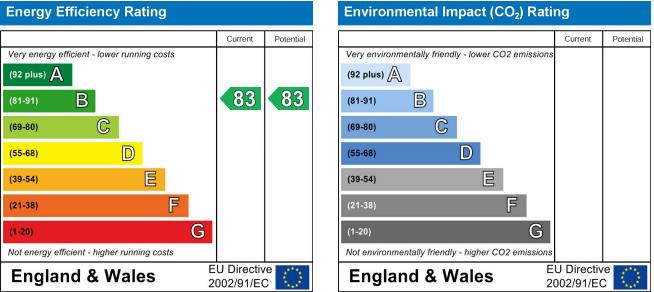
Floor Plans



Area Map



Energy Performance Graph



These particulars, whilst believed to be accurate are set out as a general outline only for guidance and do not constitute any part of an offer or contract. Intending purchasers should not rely on them as statements of representation of fact, but must satisfy themselves by inspection or otherwise as to their accuracy. No person in this firms employment has the authority to make or give any representation or warranty in respect of the property.