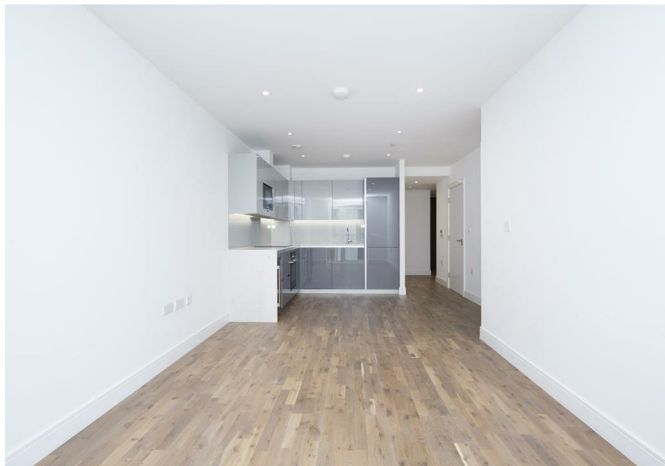




Apartment 62, Discovery House Juniper Drive, London, SW18 1XY

**£650,000**



## Apartment 62, Discovery House Juniper Drive, London, SW18 1XY

**£650,000**

This one-bedroom apartment in Discovery House offers a contemporary urban lifestyle with the added charm of vibrant riverside living. Situated at Battersea Reach, this home enjoys stunning views of landscaped gardens and the River Thames.

The modern open-plan layout seamlessly connects the living, dining, and kitchen areas, complemented by floor-to-ceiling windows that flood the space with natural light. The bedroom includes bespoke wardrobes with built-in lighting and extra storage, maximizing space and functionality. The kitchen and bathroom feature Italian design, paired with high-end appliances for modern convenience.

Residents of Discovery House enjoy exclusive access to first-class amenities, including a private residents' courtyard, a 24-hour concierge service, and state-of-the-art fitness facilities. The riverside location provides easy access to nearby cafés, restaurants, and shops, as well as excellent transport links—including Wandsworth Town Station and the River Taxi service, ensuring fast connections across London.

This is a rare opportunity to become part of the thriving Battersea Reach community, offering the perfect balance of elegance, convenience, and waterfront serenity.



## Description

## Situation

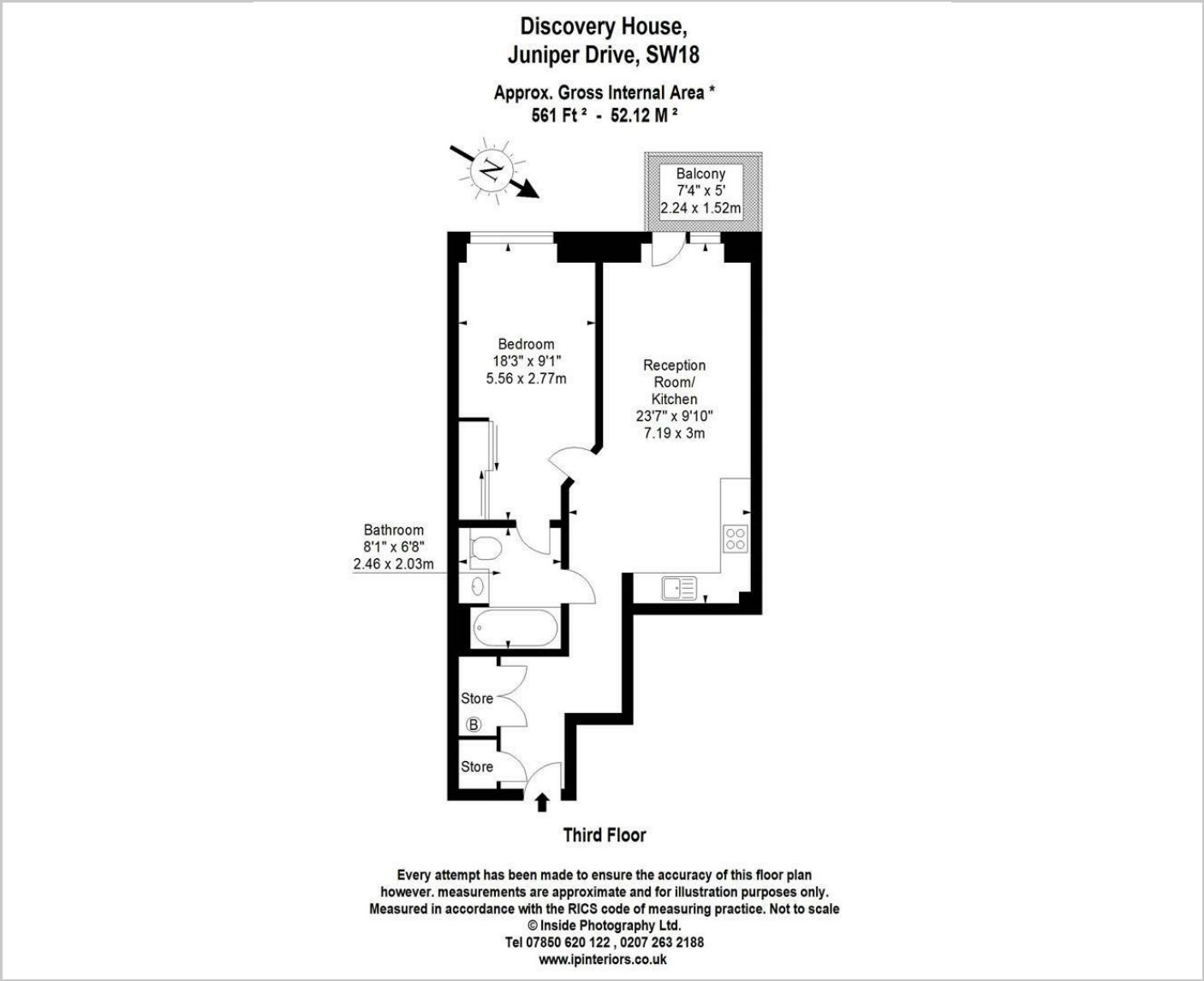


null

Council Tax Band: E

Available:

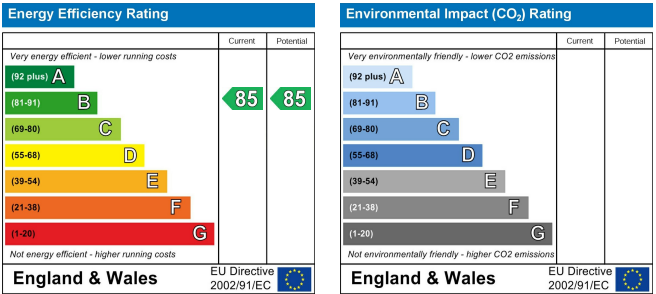
Floor Plans



Area Map



Energy Performance Graph



These particulars, whilst believed to be accurate are set out as a general outline only for guidance and do not constitute any part of an offer or contract. Intending purchasers should not rely on them as statements of representation of fact, but must satisfy themselves by inspection or otherwise as to their accuracy. No person in this firms employment has the authority to make or give any representation or warranty in respect of the property.