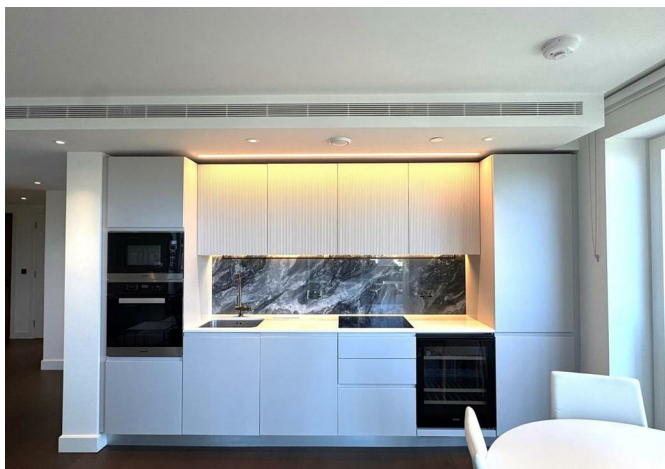




87 Belvedere Row Apartments Fountain Park Way, London, W12 7JT

£1,150,000





## 87 Belvedere Row Apartments Fountain Park Way, London, W12 7JT

**£1,150,000**

Situated in the prestigious White City Living development, this contemporary two-bedroom, two-bathroom apartment on the 11th floor of Belvedere Row Apartments offers a luxurious and convenient lifestyle. Just a 3-minute walk from White City and Wood Lane tube stations, the property enjoys excellent transport links to central London and is surrounded by a vibrant community of shops, green spaces, and cultural landmarks.

The apartment's design features style and functionality. The open-plan living area includes a fully integrated kitchen with premium appliances, leading to a bright and airy space with floor-to-ceiling windows and access to a private balcony. Comfort cooling and underfloor heating throughout provide year-round comfort.

Two spacious bedrooms are equipped with built-in wardrobes, offering generous storage. The master bedroom, with its east-facing aspect, invites natural morning light and includes a stylish en-suite bathroom with a walk-in shower. The second bedroom, with its north-facing aspect, is equally spacious and practical. The second bathroom features a bathtub and additional storage, ensuring convenience for residents.

Residents of White City Living benefit from exceptional amenities, including a 24-hour concierge service, an indoor swimming pool with sun terrace, residents' Club Lounge, dining room and private kitchen, a fully equipped gym, treatment and massage rooms, cinemas, entertainment suite, and landscaped gardens. Located near Westfield London, renowned dining options, and serene outdoor spaces, this apartment offers the perfect blend of comfort, style, and convenience.



Description

Situation

null  
Council Tax Band: F  
Available:



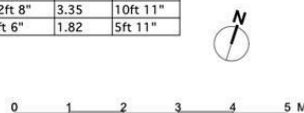
## Floor Plans



Flat Type B6A(H) (maximum dimensions)

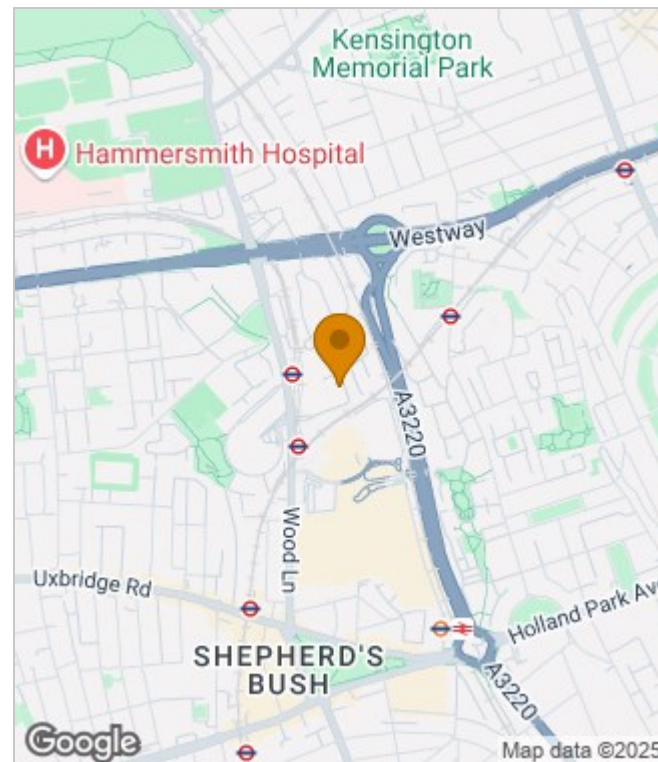
Units: B0307, B0507, B0807, B1007, B1107

Location	Length		Width	
	M	Ft	M	Ft
Kitchen / Living / Dining	6.04	19ft 9"	4.82	15ft 9"
Bedroom 1	5.08	16ft 8"	3.42	11ft 2"
Bedroom 2	3.87	12ft 8"	3.35	10ft 11"
Balcony	2.9	9ft 6"	1.82	5ft 11"

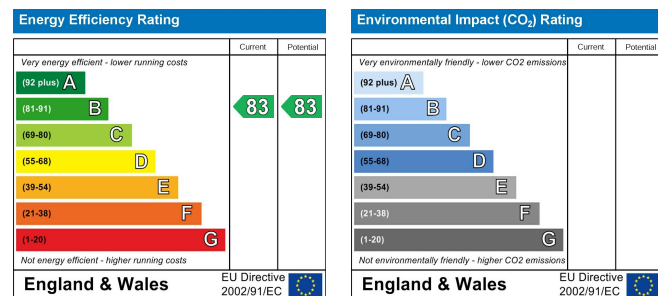


Flareplans shown for White City Living are for approximate measurements only and are not necessarily drawn to scale. Exact layouts and sizes may vary. All measurements may vary within a tolerance of 1%. The dimensions are not intended to be used for exact sizes, appliance sizes or items of furniture. Kitchen appliance/work positions indicated are for guidance only. External cladding and window mullion locations and sizing are indicative and subject to change.

## Area Map



## Energy Performance Graph



These particulars, whilst believed to be accurate are set out as a general outline only for guidance and do not constitute any part of an offer or contract. Intending purchasers should not rely on them as statements of representation of fact, but must satisfy themselves by inspection or otherwise as to their accuracy. No person in this firm's employment has the authority to make or give any representation or warranty in respect of the property.

3 Shortlands, Hammersmith, London, W6 8DA

Tel: 020 8124 1073 Email: [management@lessel.co.uk](mailto:management@lessel.co.uk) <https://www.lessel.co.uk>