



Flat 4806, 2, Hobart Building Wards Place, London, E14 9ZD

**£1,599 Per Week**



## Flat 4806, 2, Hobart Building Wards Place, London, E14 9ZD

**£1,599 Per Week**

PENTHOUSE APARTMENT - Rarely available, premium, two bedroom duplex PENTHOUSE apartment with parking, available in Warden's West Tower boasting city views. Located on the 48th and 49th floors. Warden development with many in-house facilities on offer such as 24hr concierge, outdoor heated swimming pool and jacuzzi, spacious and fully equipped residence gym, yoga studio, treatment rooms, private cinema and a roof top bar situated on the 53rd floor.

The grey and cool blue apartment comes with timeless coordinating accent pieces and finishing touches. Floor to ceiling windows allowing natural light to flow in in the bedroom and living area. The spacious open plan living/kitchen area completed with wooden flooring is ideal for relaxation after a long day or entertaining friends/family for a dinner party. The lounge leads to a large private balcony where you can add plants which coheres to the landscape garden. The sleek gallery kitchen comes with fully integrated appliances such as fridge/freezer, oven, wine cooler, hob and dishwasher, forest green gloss cabinets and marbled worktop/splash back provide an uncluttered feel which is also very easy to maintain.

The bedrooms is carpeted to provide a cosy and warm feel with built-in wardrobe. A spacious contemporary warden shower room comes with back lit mirrored cabinet, rain shower and one piece toilet.

### TRANSPORT LINKS:

Canary Wharf Station - 0.2 miles

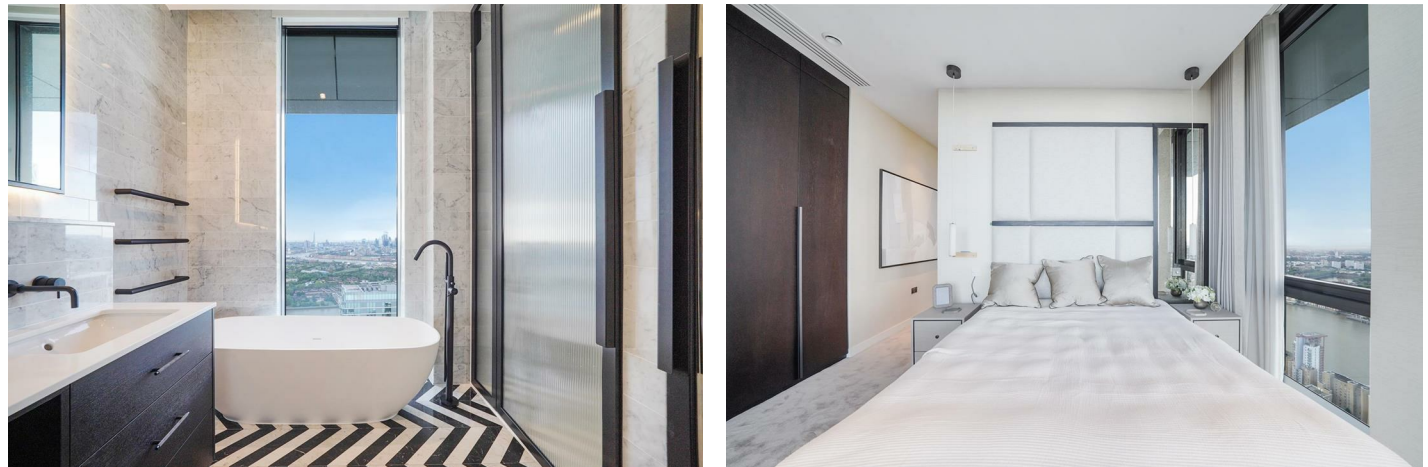
Heron Quay Station - 0.1 miles

South Quay Station- 0.1 miles

## Description



## Situation



Furnished  
Council Tax Band:  
Available: 16th September 2024

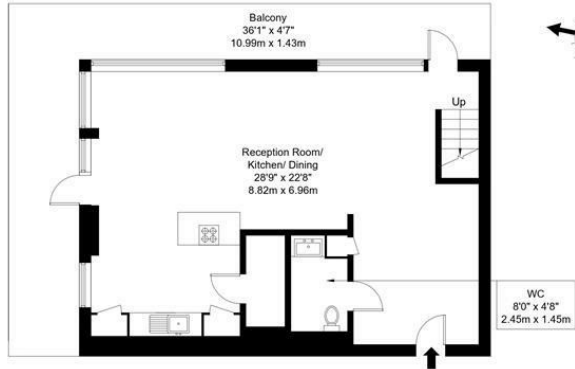
## Floor Plans

### Wards Place, E14 9ZD

Approx Gross Internal Area = 127.33 sq m / 1370 sq ft

Balcony = 31.32 sq m / 337 sq ft

Total = 158.65 sq m / 1707 sq ft



Forty-eighth Floor



Forty-ninth Floor

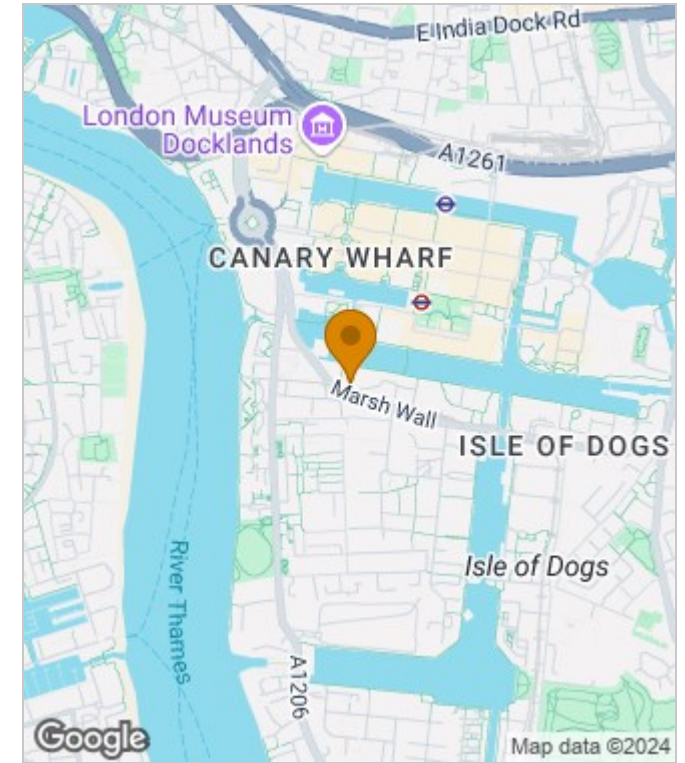
Ref :

Copyright **BLEU PLAN**

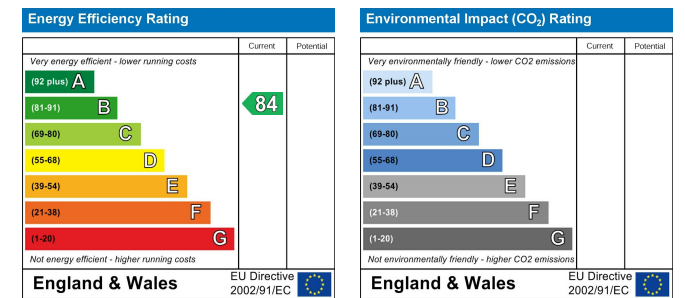
The Floor plan is not to scale and measurements and areas shown are approximate and therefore should be used for illustrative purposes only. The plan has been prepared in accordance with the RICS code of Measuring Practice and whilst we have confidence in the information produced it must not be relied on. If there is any aspect of particular importance, you should carry out or commission your own inspection of the property.

Copyright @ BLEUPLAN

## Area Map



## Energy Performance Graph



These particulars, whilst believed to be accurate are set out as a general outline only for guidance and do not constitute any part of an offer or contract. Intending purchasers should not rely on them as statements of representation of fact, but must satisfy themselves by inspection or otherwise as to their accuracy. No person in this firm's employment has the authority to make or give any representation or warranty in respect of the property.

3 Shortlands, Hammersmith, London, W6 8DA

Tel: 020 8124 1073 Email: [management@lessel.co.uk](mailto:management@lessel.co.uk) <https://www.lessel.co.uk>