

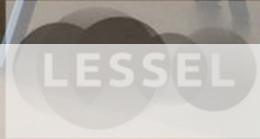


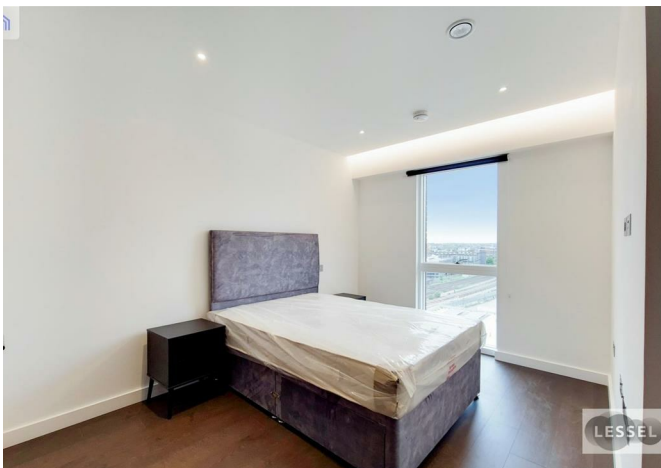
LESSEL



43 Senate Building 3, Lanchester Way,, London, SW11 7DD

£738 Per Week





43 Senate Building 3, Lanchester Way,, London, SW11 7DD

£738 Per Week

A stunning 2 bedroomed property located on this much sought-after Lexington Gardens development Nine elms.

The property boasts 2 bedrooms one of which is a double, 2 bathrooms and a modern open plan kitchen and sitting room.

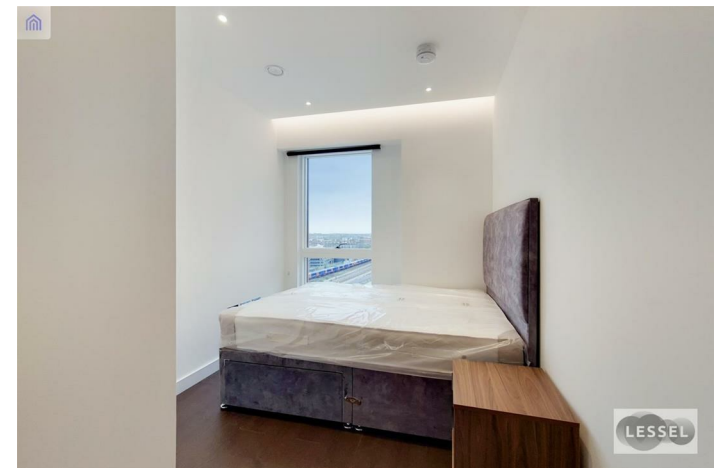
The property is situated on the 8th floor with lift access, 24-hour concierge, gym and media room available to residents.

The property further benefits from a fantastic location for all major amenities

Description



Situation

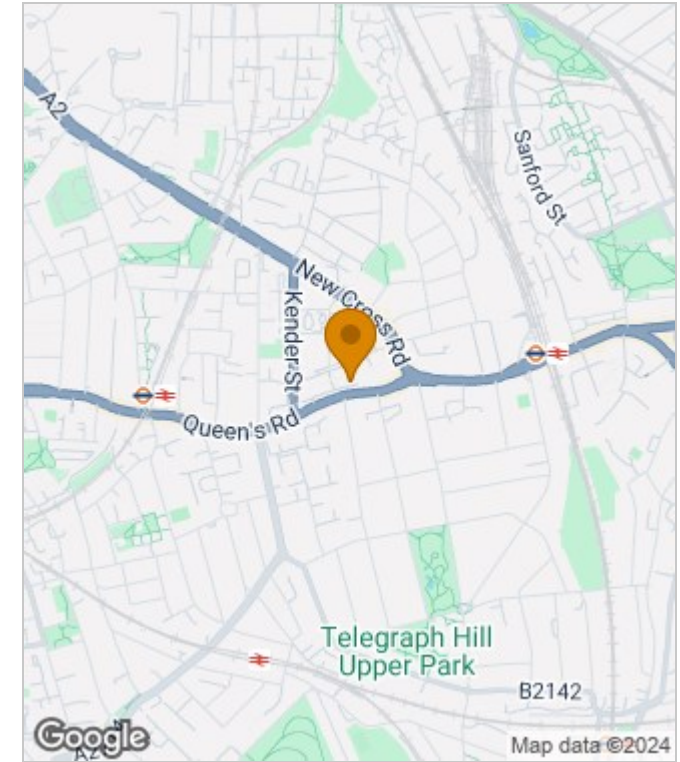


Furnished
Council Tax Band: F
Available: 20th September 2024

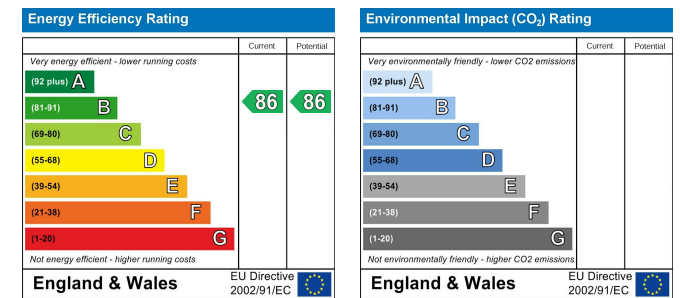
Floor Plans



Area Map



Energy Performance Graph



These particulars, whilst believed to be accurate are set out as a general outline only for guidance and do not constitute any part of an offer or contract. Intending purchasers should not rely on them as statements of representation of fact, but must satisfy themselves by inspection or otherwise as to their accuracy. No person in this firm's employment has the authority to make or give any representation or warranty in respect of the property.