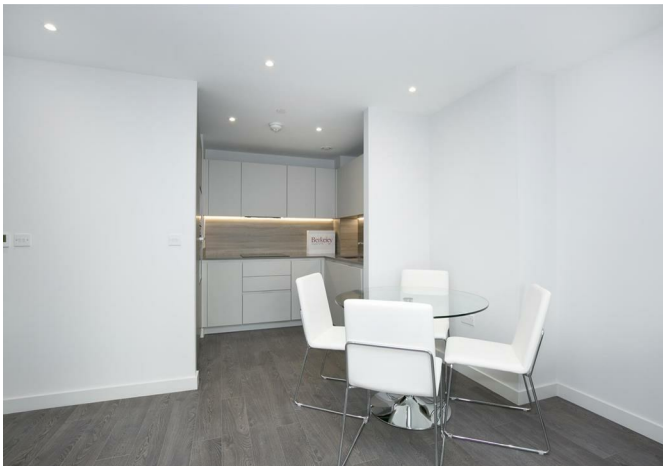




Flat 10 The shoreline Building Newnton Close, London, N4 2GT

£485 Per Week



Flat 10 The shoreline Building Newton Close, London, N4 2GT

£485 Per Week

LOW AGENCY FEES - The brand-new apartment sets within the sought-after Woodberry Down development

One bedroom furnished apartment with highly finished bathrooms

Spacious open plan living area

Fitted kitchen with integrated Bosch appliance

Underfloor heating

Concierge Service

Resident gym and swimming pool

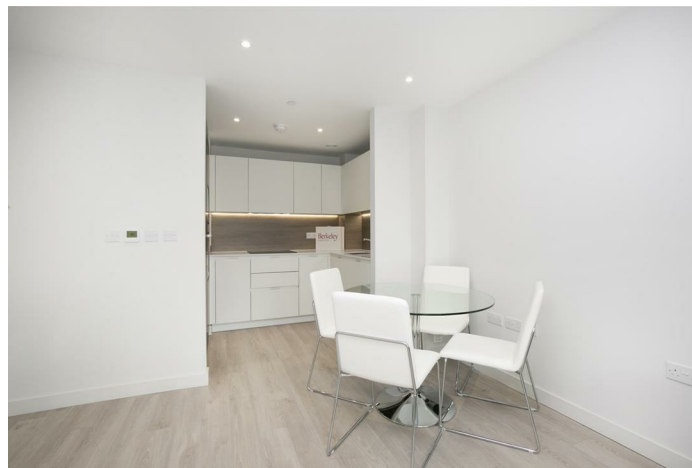
Apartment benefits from floor to ceiling glazing, offering abundant natural light and panoramic view over the reservoir and landscape garden

Public Transport

Description

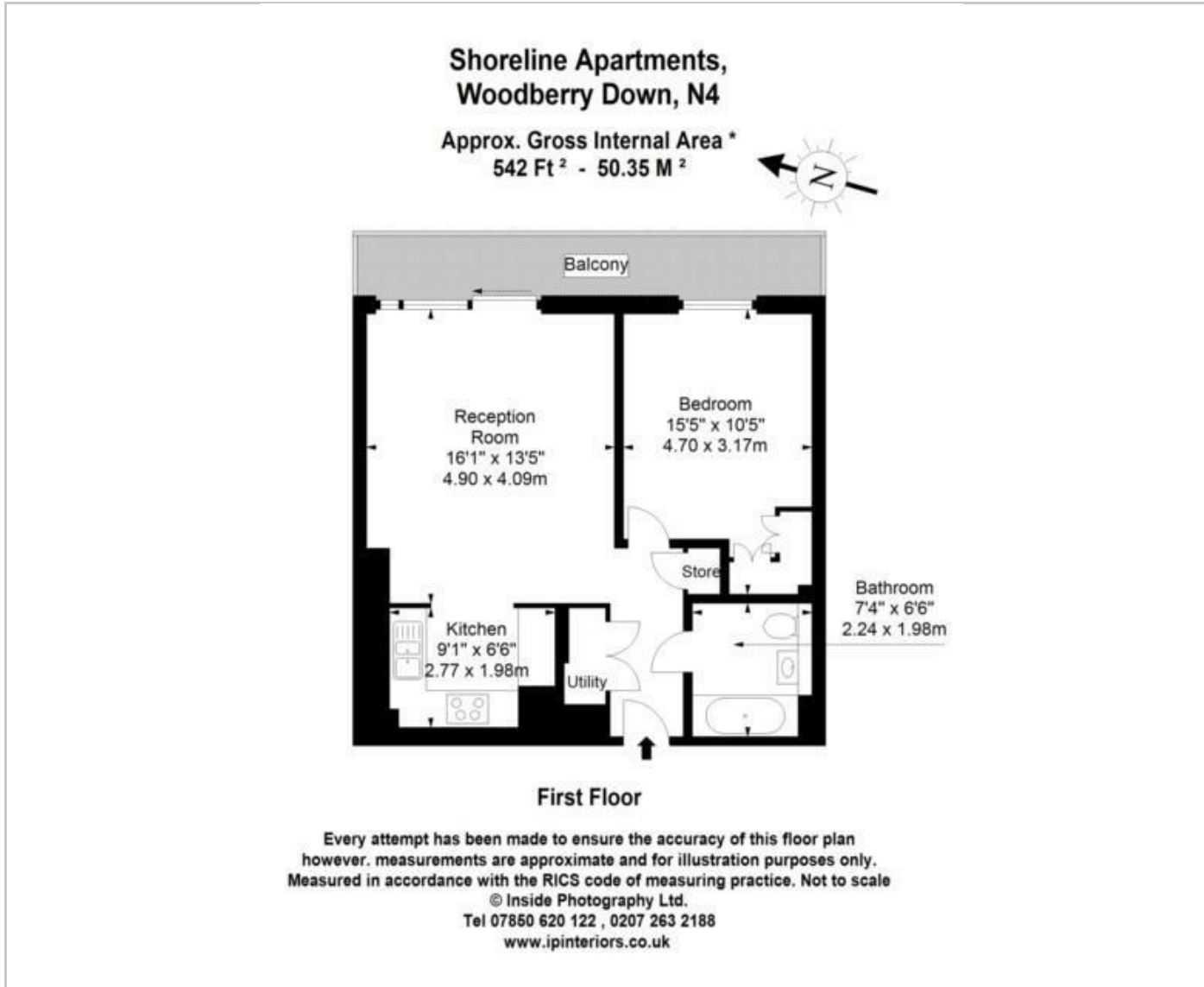


Situation

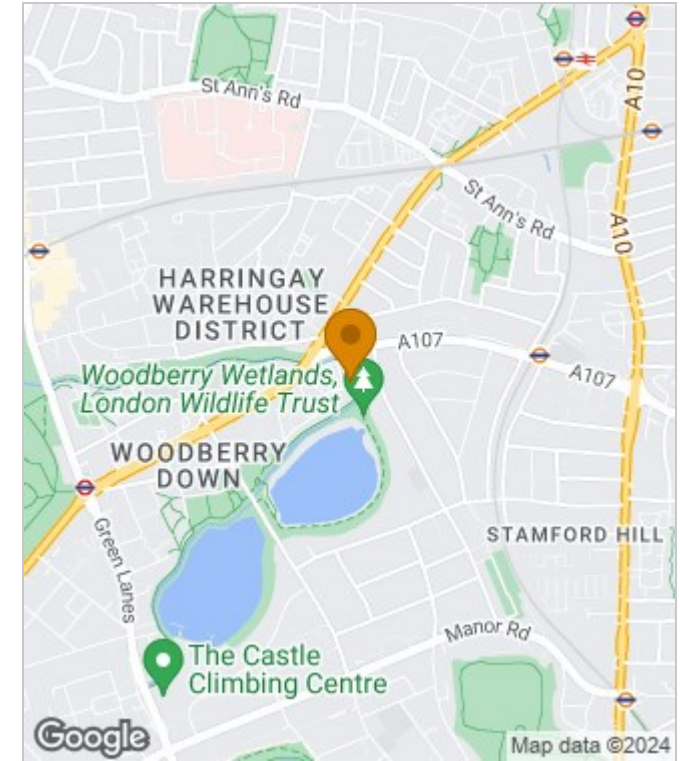


Furnished
Council Tax Band: C
Available: 22nd August 2024

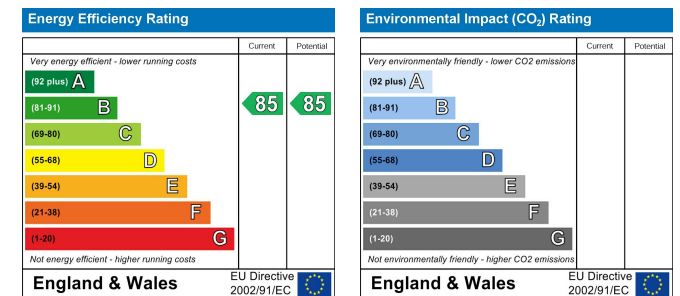
Floor Plans



Area Map



Energy Performance Graph



These particulars, whilst believed to be accurate are set out as a general outline only for guidance and do not constitute any part of an offer or contract. Intending purchasers should not rely on them as statements of representation of fact, but must satisfy themselves by inspection or otherwise as to their accuracy. No person in this firm's employment has the authority to make or give any representation or warranty in respect of the property.