

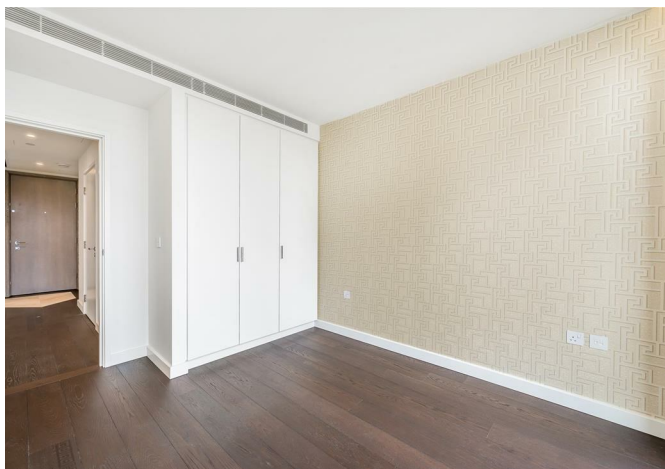


**LESSEL**



Flat 2305 67 Bondway, London, SW8 1GS

**£850 Per Week**



## Flat 2305 67 Bondway, London, SW8 1GS

**£850 Per Week**

IN AN EXCLUSIVE PARTNERSHIP WITH VERSACE – THE GLOBAL SYMBOL OF GLAMOUR – DAMAC TOWER NINE ELMS LONDON BRINGS YOU THE GOLD STANDARD IN BRANDED LIVING. THE DAMAC TOWER NINE ELMS LONDON EXPERIENCE GOES BEYOND FOUR WALLS – STEP OUTSIDE ONTO THE NEW WALKWAYS AND TAKE IN THE DELIGHTFUL NEW PUBLIC PIAZZA.

THE NINE ELMS AREA IS ALREADY HOME TO THE NEW COVENT GARDEN MARKET, THE NEW US EMBASSY AND BATTERSEA POWER STATION, A CHERISHED FEATURE OF THE LONDON SKYLINE.

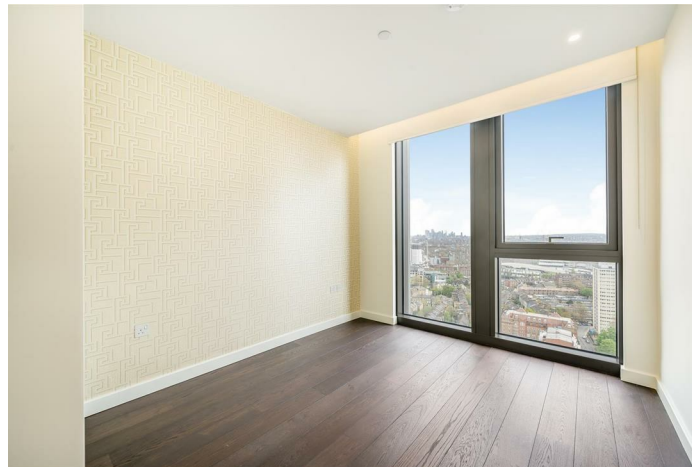
CLOSE TO TWO MILES OF THAMES RIVER FRONTAGE WILL BE LINED WITH CAFÉS, BARS, RESTAURANTS, CULTURAL ATTRACTIONS AND PUBLIC SPACE AS PART OF THE PLANNED REGENERATION.

WHEN READY, THE NEW LINEAR PARK WILL MAKE NINE ELMS ONE OF THE GREENEST DISTRICTS ON LONDON'S SOUTH BANK, CREATING 50 ACRES OF NEW PUBLIC SPACE.

## Description



## Situation



Furnished

Council Tax Band: New Build

Available: 6th September 2024

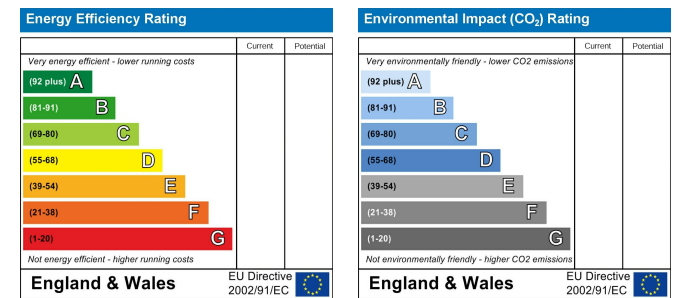
## Floor Plans



## Area Map



## Energy Performance Graph



These particulars, whilst believed to be accurate are set out as a general outline only for guidance and do not constitute any part of an offer or contract. Intending purchasers should not rely on them as statements of representation of fact, but must satisfy themselves by inspection or otherwise as to their accuracy. No person in this firm's employment has the authority to make or give any representation or warranty in respect of the property.