

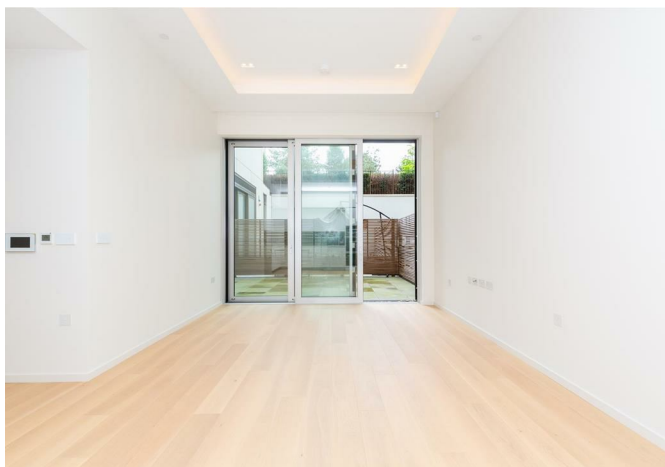
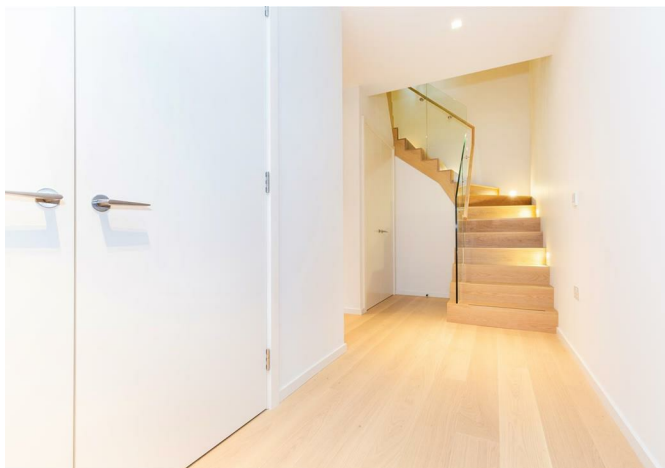


LESSEL



Flat G.07 7 Lillie Square, London, SW6 1GD

£1,145 Per Week



Flat G.07 7 Lillie Square, London, SW6 1GD

£1,145 Per Week

Welcome to this stunning property located in the prestigious Lillie Square, London, SW6. This exquisite flat boasts a spacious 1,312 sq ft of living space, perfect for those looking for a comfortable and luxurious home.

Upon entering, you are greeted by a stylish reception room, ideal for entertaining guests or simply relaxing after a long day. With three well-appointed bedrooms, there is plenty of space for a growing family or for those who enjoy having guests over.

The property features three modern bathrooms, ensuring convenience and privacy for all residents. No more waiting in line for the shower in the morning!

One of the perks of this property is the parking space available for one vehicle. Say goodbye to the hassle of searching for parking in busy London streets.

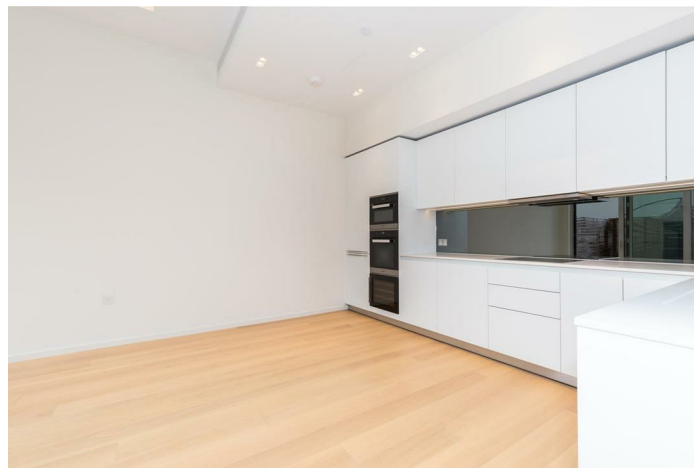
Whether you are looking for a new family home or a stylish city pad, this flat in Lillie Square offers the perfect blend of comfort, convenience, and sophistication. Don't miss out on the opportunity to make this beautiful property your own. Contact us today to arrange a viewing and take the first step towards your dream home in London.

Fees may apply please view Lessel website.

Description



Situation

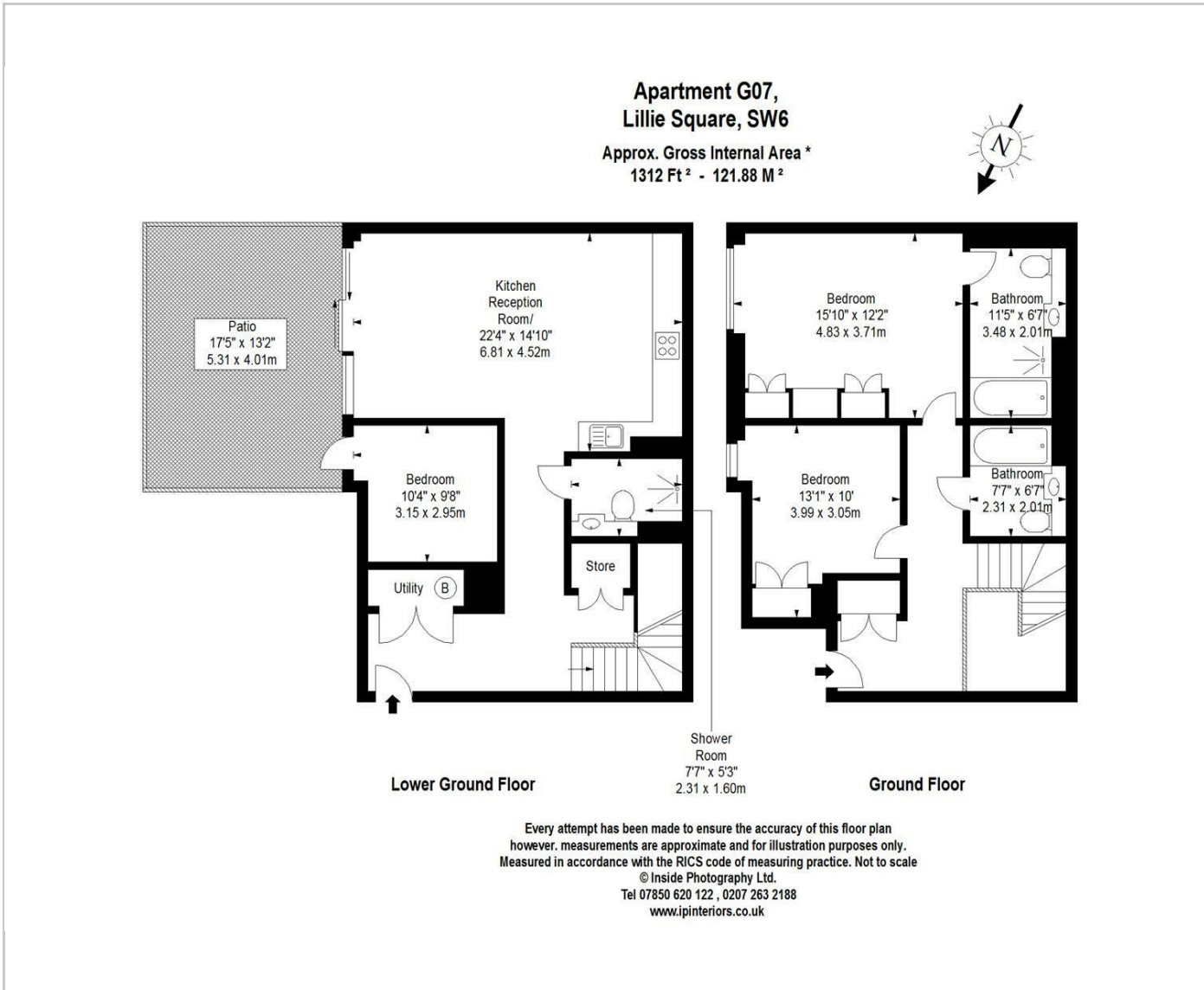


Unfurnished

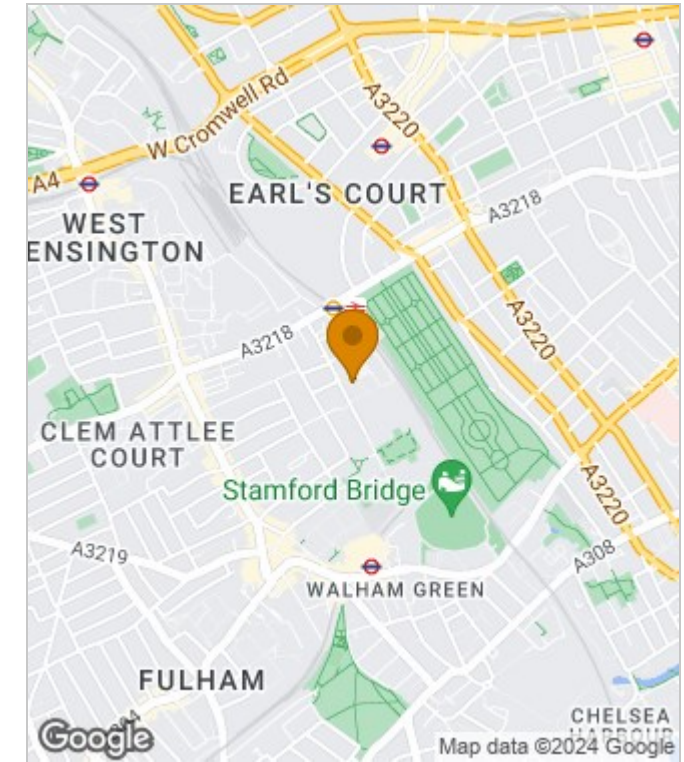
Council Tax Band: F

Available: 10th August 2024

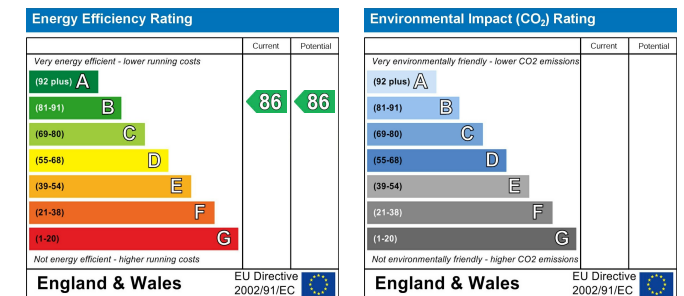
Floor Plans



Area Map



Energy Performance Graph



These particulars, whilst believed to be accurate are set out as a general outline only for guidance and do not constitute any part of an offer or contract. Intending purchasers should not rely on them as statements of representation of fact, but must satisfy themselves by inspection or otherwise as to their accuracy. No person in this firm's employment has the authority to make or give any representation or warranty in respect of the property.