



210 Neroli House 14 Piazza Walk, London, E1 8ZH
£877 Per Week



210 Neroli House 14 Piazza Walk, London, E1 8ZH

£877 Per Week

Welcome to Neroli House in the prestigious Goodman's Field, E1. This stunning apartment boasts a spacious reception room, perfect for entertaining guests or relaxing after a long day. With two cosy bedrooms and two modern bathrooms, this property offers both comfort and convenience.

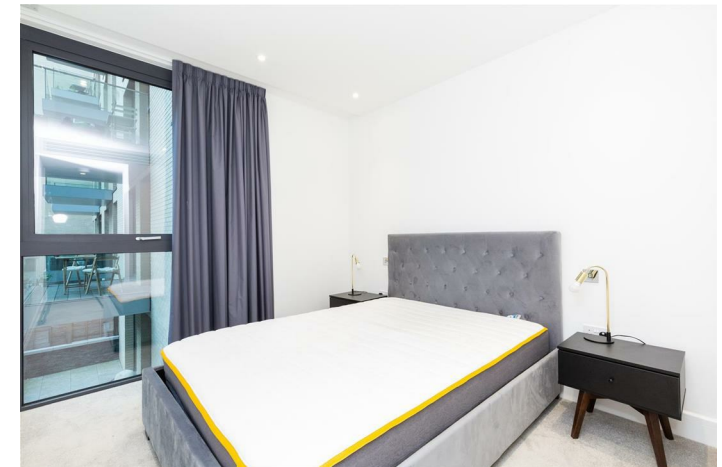
Spanning across 938 sq ft, this apartment provides ample space for all your needs. The sleek design and contemporary finishings make this property a true gem in the heart of the city.

Located in a vibrant neighbourhood with easy access to amenities, restaurants, and transportation links, Neroli House offers the best of city living. Don't miss the opportunity to make this apartment your new home sweet home in London.

Description

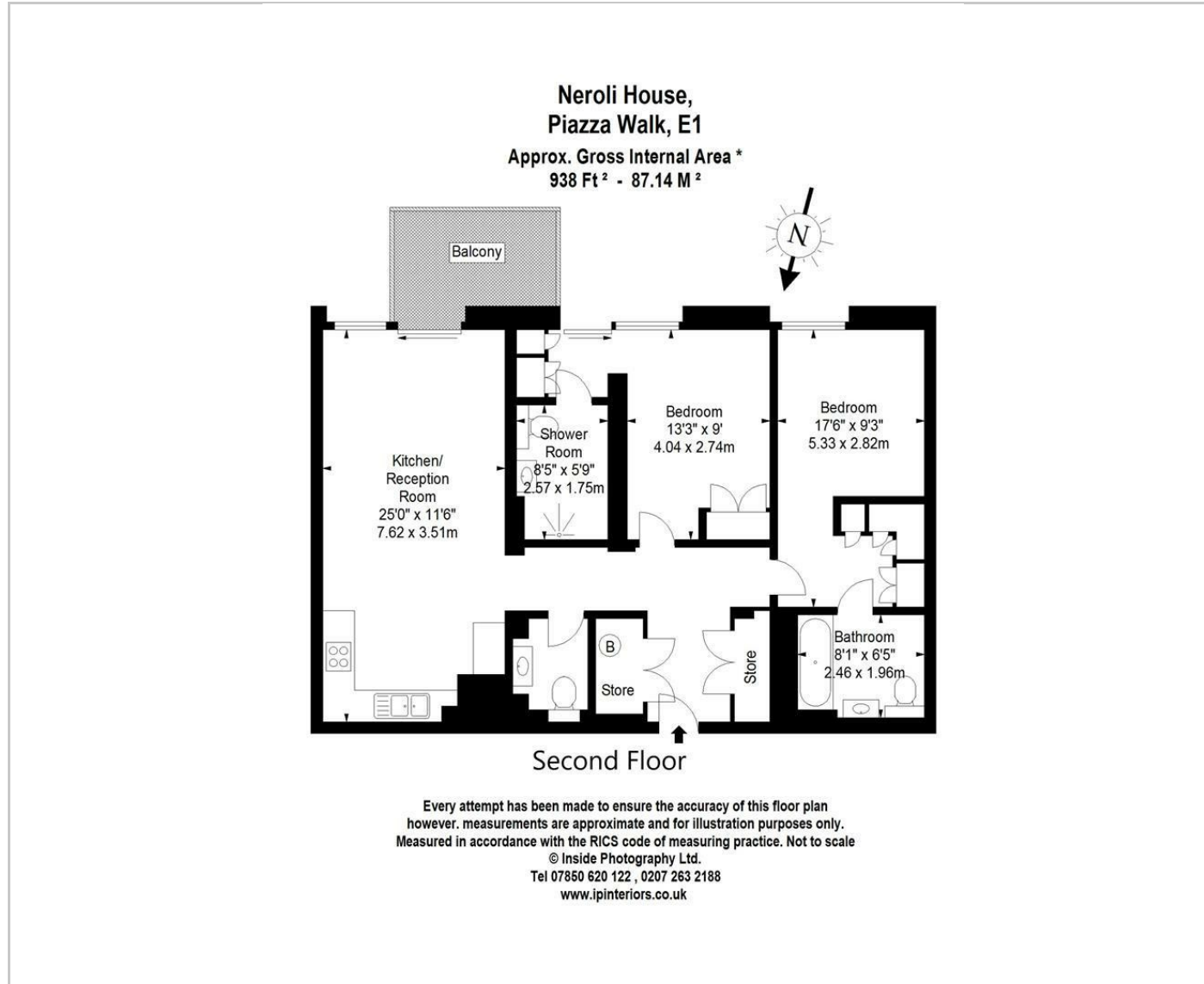


Situation

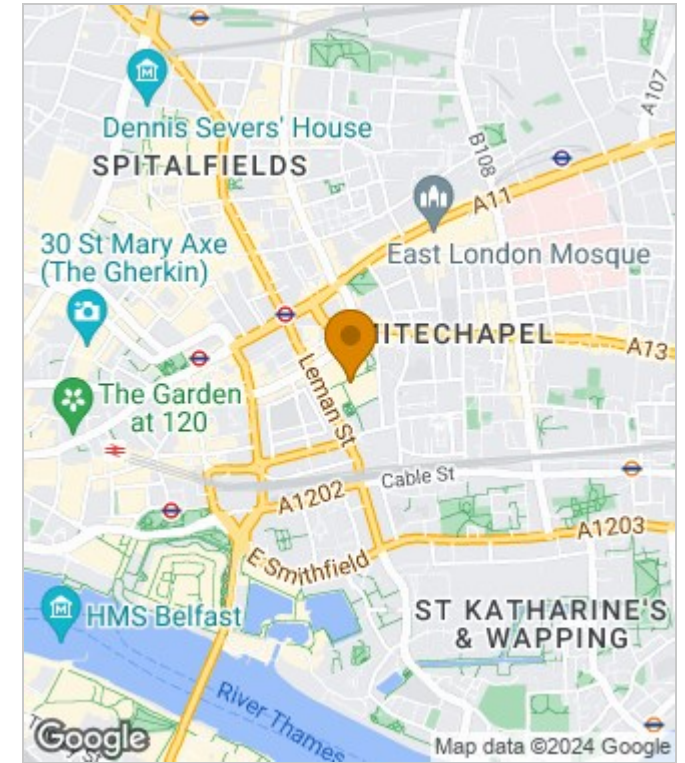


Furnished
Council Tax Band: F
Available: 10th June 2024

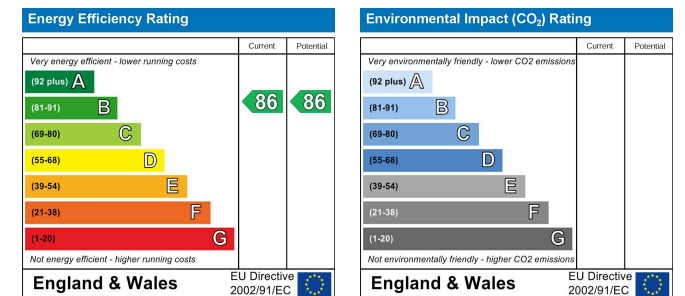
Floor Plans



Area Map



Energy Performance Graph



These particulars, whilst believed to be accurate are set out as a general outline only for guidance and do not constitute any part of an offer or contract. Intending purchasers should not rely on them as statements of representation of fact, but must satisfy themselves by inspection or otherwise as to their accuracy. No person in this firm's employment has the authority to make or give any representation or warranty in respect of the property.