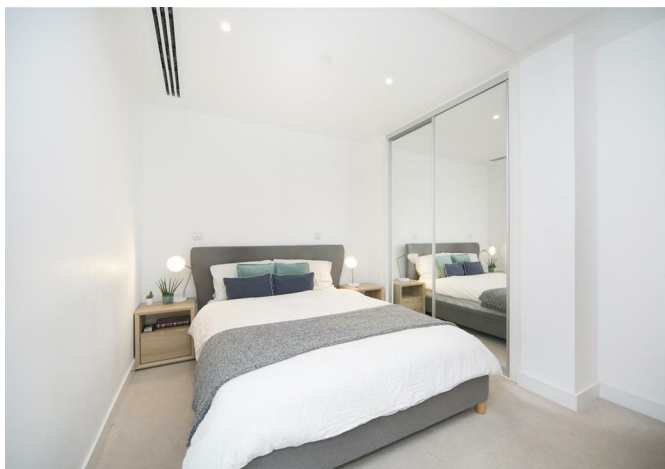




5 Santina Apartments, 45 Cherry Orchard Road, Croydon, Surrey, CR0 6FH
£357 Per Week



5 Santina Apartments, 45 Cherry Orchard Road, Croydon, Surrey, CR0 6FH

£357 Per Week

Lessel Limited is delighted to launch a bright, spacious and well arranged first floor apartment. The flat is finished to a high standard of specification and design, including a well fitted kitchen and a luxury bathroom. Of particular benefit is the unusually large 23 ft open plan reception room. Santina Apartments are within a short walk of East Croydon Station and the centre of Croydon with its comprehensive array of shops and restaurants is also within walking distance.

Description

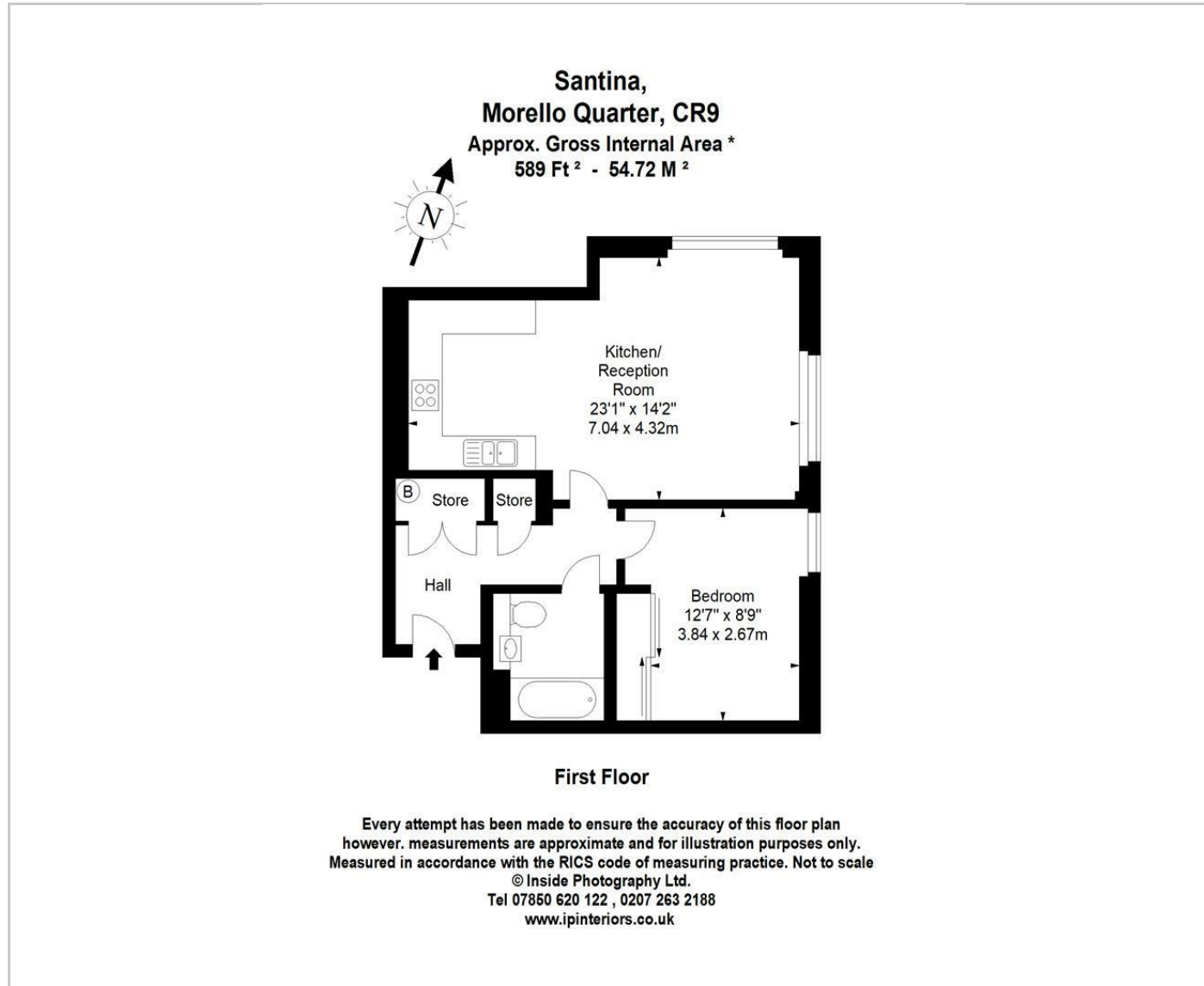


Situation

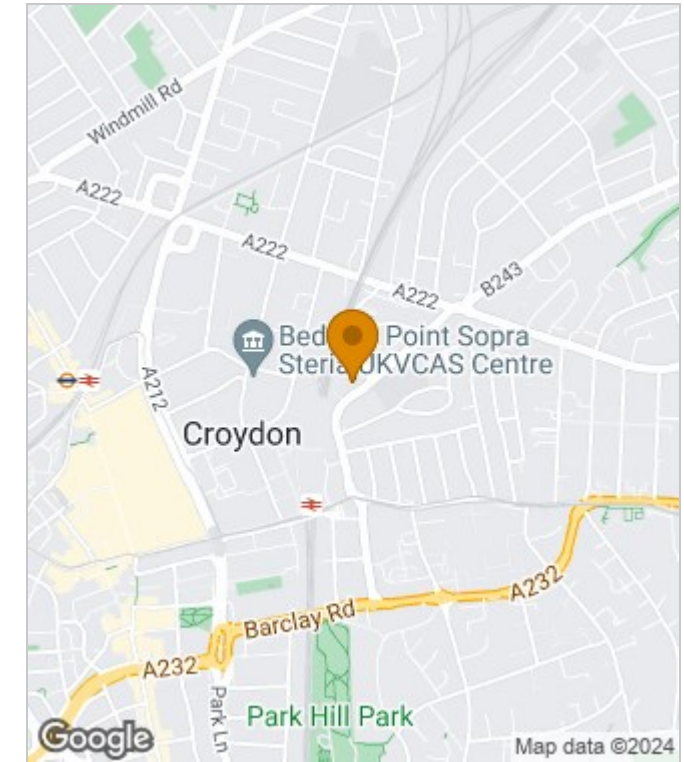


Furnished
Council Tax Band:
Available: 1st August 2024

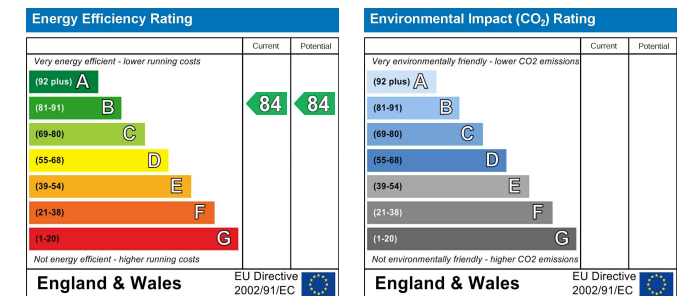
Floor Plans



Area Map



Energy Performance Graph



These particulars, whilst believed to be accurate are set out as a general outline only for guidance and do not constitute any part of an offer or contract. Intending purchasers should not rely on them as statements of representation of fact, but must satisfy themselves by inspection or otherwise as to their accuracy. No person in this firm's employment has the authority to make or give any representation or warranty in respect of the property.