



Apt 1608 Harcourt Tower 67 Marsh Wall, London, E14 9GS
£850 Per Week



Apt 1608 Harcourt Tower 67 Marsh Wall, London, E14 9GS

£850 Per Week

Welcome to this charming apartment located at 67 Marsh Wall in the heart of London! This delightful property boasts a cosy reception room, perfect for relaxing or entertaining guests. With two lovely bedrooms, there's ample space for a small family or for those who enjoy having a guest room or home office. The apartment features a well-appointed bathroom, ensuring convenience and comfort for the residents.

Situated in a vibrant area of London, this apartment offers the quintessential city living experience. Whether you're looking to explore the local cafes, restaurants, or shops, everything you need is right at your doorstep. The property's convenient location also provides easy access to public transportation, making it a breeze to navigate the city.

Although the exact square footage is not specified, this apartment is sure to impress with its layout and functionality. The lack of specific square footage allows for flexibility in how you choose to utilise the space, giving you the freedom to design the apartment to suit your lifestyle.

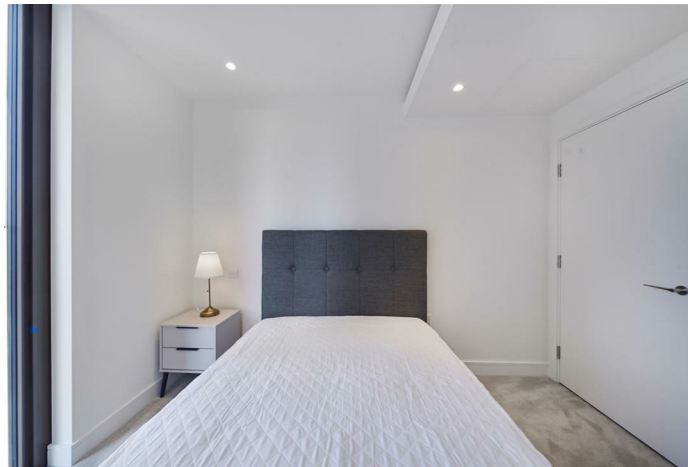
Don't miss out on the opportunity to own or rent this fantastic apartment in London. With its desirable location and charming features, this property is a gem waiting to be discovered. Contact us today to arrange a viewing and experience the allure of city living at 67 Marsh Wall!

Description

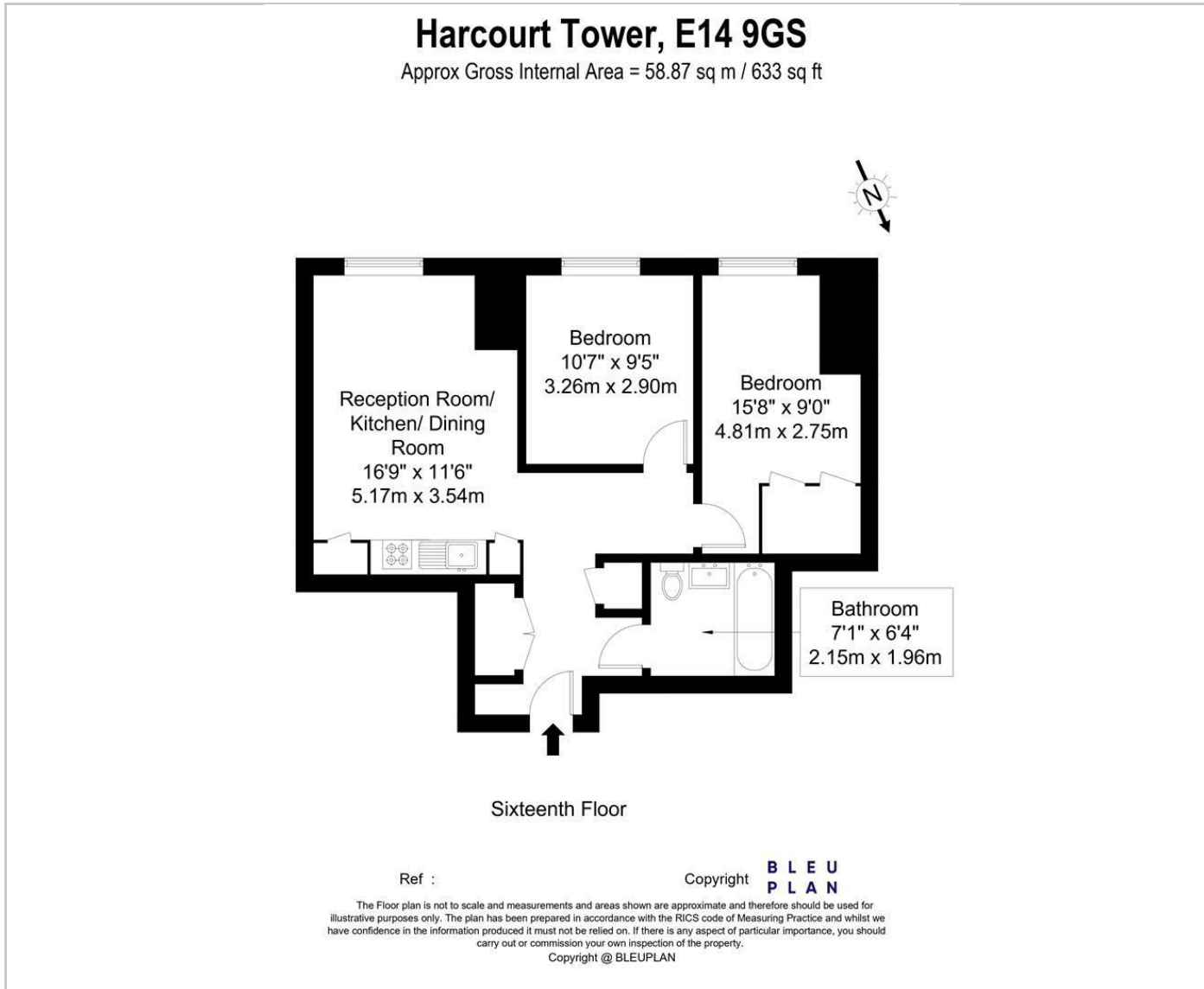


Situation

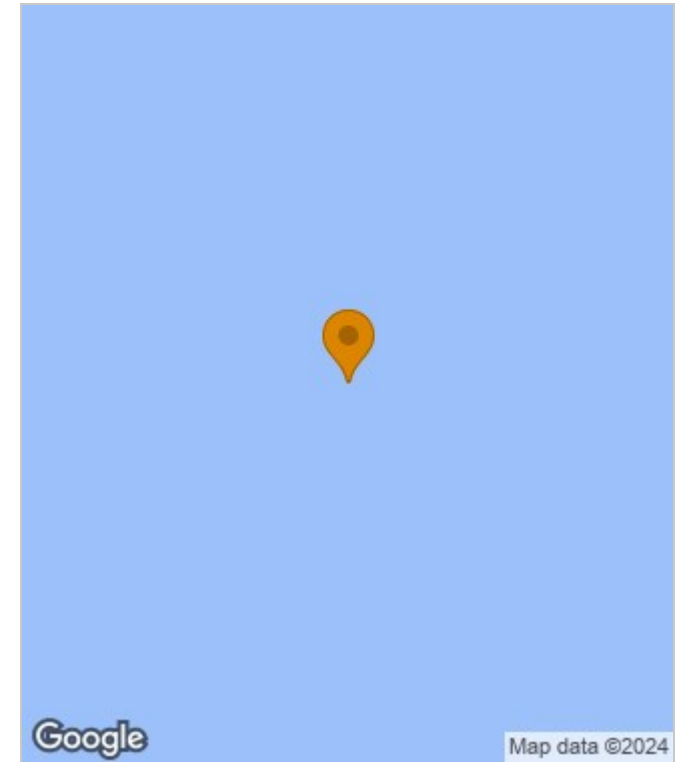
Furnished
Council Tax Band: New Build
Available: 17th June 2024



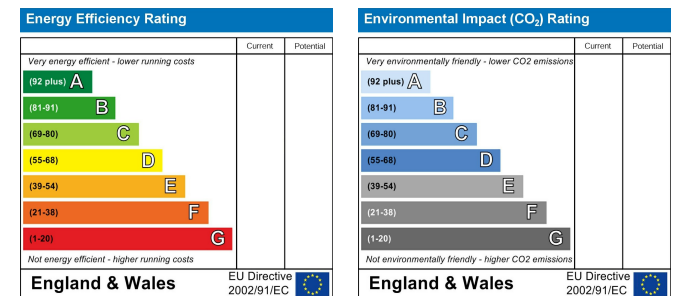
Floor Plans



Area Map



Energy Performance Graph



These particulars, whilst believed to be accurate are set out as a general outline only for guidance and do not constitute any part of an offer or contract. Intending purchasers should not rely on them as statements of representation of fact, but must satisfy themselves by inspection or otherwise as to their accuracy. No person in this firm's employment has the authority to make or give any representation or warranty in respect of the property.