

Flat 607 23 Gauging Square, London, E1W 2AW
£710 Per Week



Flat 607 23 Gauging Square, London, E1W 2AW

£710 Per Week

Lessel is delighted to present this beautifully furnished one bedroom two bathroom at this popular London Dock development, conveniently located on the doorstep of the City of London.

The sleek gallery kitchen comes with fully integrated appliances such as fridge/freezer, oven, hob and dishwasher, the white cabinets and worktop/splash back provide an uncluttered feel which is also very easy to maintain.

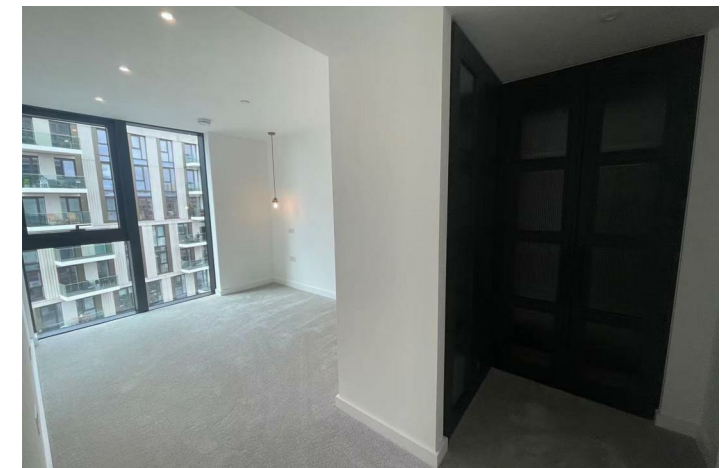
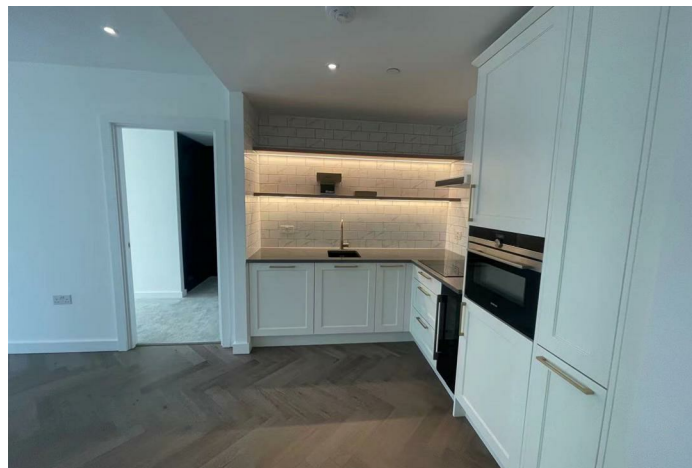
Benefits include on-site leisure facilities with the gym, swimming pool and spa, business / conference facilities and 24 hour concierge.

Cooling / heating is delivered via a communal system for which separate charges apply.

Description



Situation



Furnished
Council Tax Band:
Available: 29th July 2024

Floor Plans

ONE BEDROOM

FLOORS: 03 TO 16

APARTMENTS: 470, 477, 484, 491, 498, 505, 512, 518, 524, 530, 537, 544, 551 & 558

TOTAL AREA	60 M²	646 SQ FT
KITCHEN	3.00m x 2.29m	9'10" x 7'6"
LIVING / DINING ROOM	5.19m x 3.75m	17'0" x 12'3"
BEDROOM	3.25m x 2.90m	10'7" x 9'5"

FLOORPLATE

LEVEL 03 SHOWN

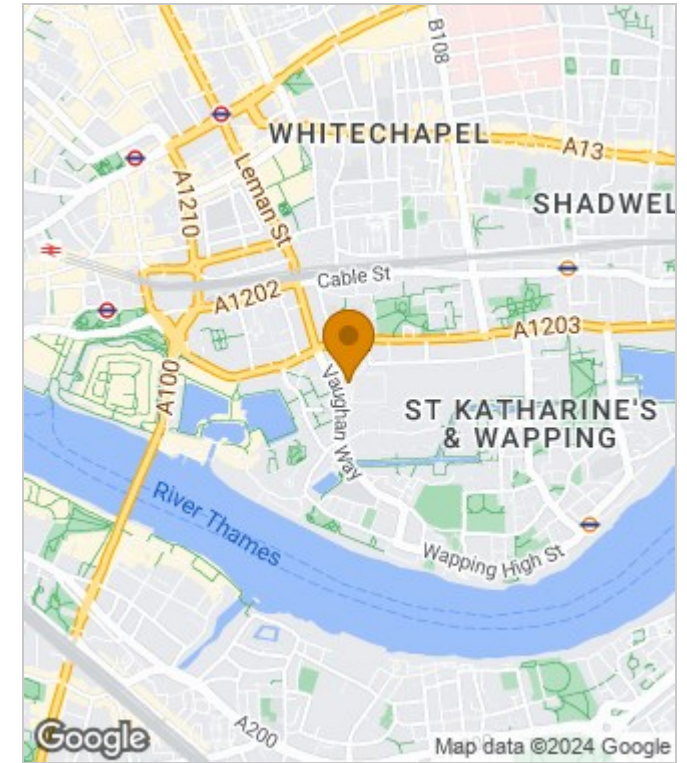
WEST ELEVATION

VIEWS WEST OVER GAUGING SQUARE

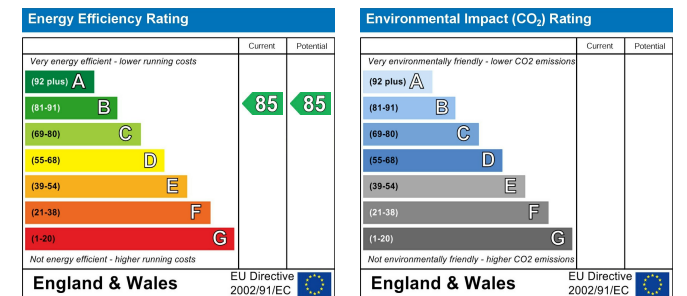
VIEWS NORTH WEST TOWARDS THE CITY

VIEWS SOUTH WEST TOWARDS TOWER BRIDGE

Area Map



Energy Performance Graph



These particulars, whilst believed to be accurate are set out as a general outline only for guidance and do not constitute any part of an offer or contract. Intending purchasers should not rely on them as statements of representation of fact, but must satisfy themselves by inspection or otherwise as to their accuracy. No person in this firm's employment has the authority to make or give any representation or warranty in respect of the property.