



LESSEL



Flat 408, 1, Avalon Point Silvocea Way, London, E14 0TY

£461 Per Week



Flat 408, 1, Avalon Point Silvocea Way, London, E14 0TY

£461 Per Week

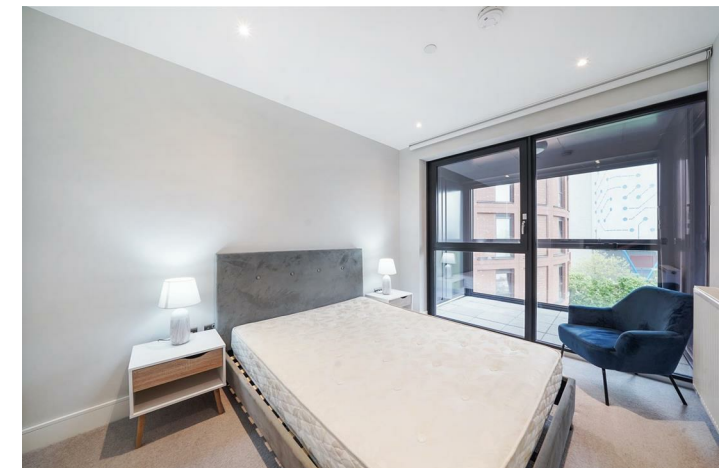
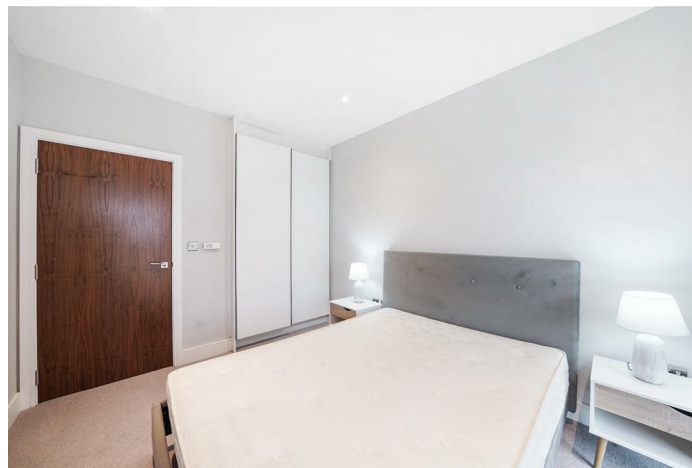
Welcome to Silvocea Way, London - a prime location for this charming new build flat! This property boasts a cosy reception room, perfect for relaxing or entertaining guests. With one bedroom and one bathroom, this flat offers a comfortable living space ideal for individuals or couples.

Built in 2022, this modern property features contemporary design elements and a fresh, clean feel throughout its 581 sq ft of space. Whether you're looking for a stylish city pad or a convenient London base, this flat has it all. Don't miss the opportunity to make this new build property your own in the heart of London!

Description



Situation



Furnished

Council Tax Band:

Available: 17th June 2024

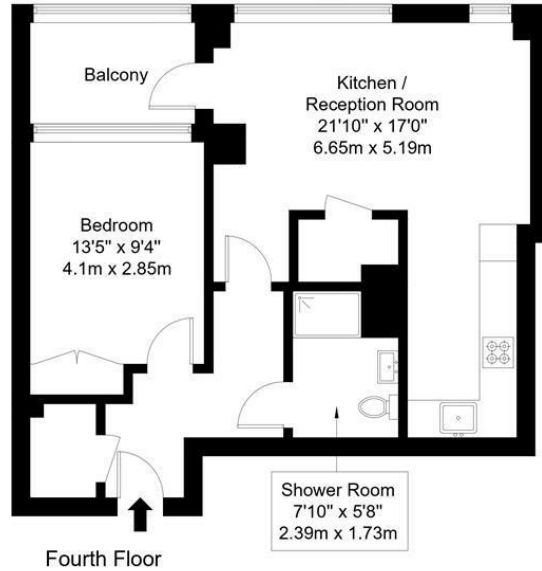
Floor Plans

Silvocea Way, E14 0TY

Approx Gross Internal Area = 51.3 sq m / 552 sq ft

Balcony = 5.4 sq m / 58 sq ft

Total = 56.7 sq m / 610 sq ft

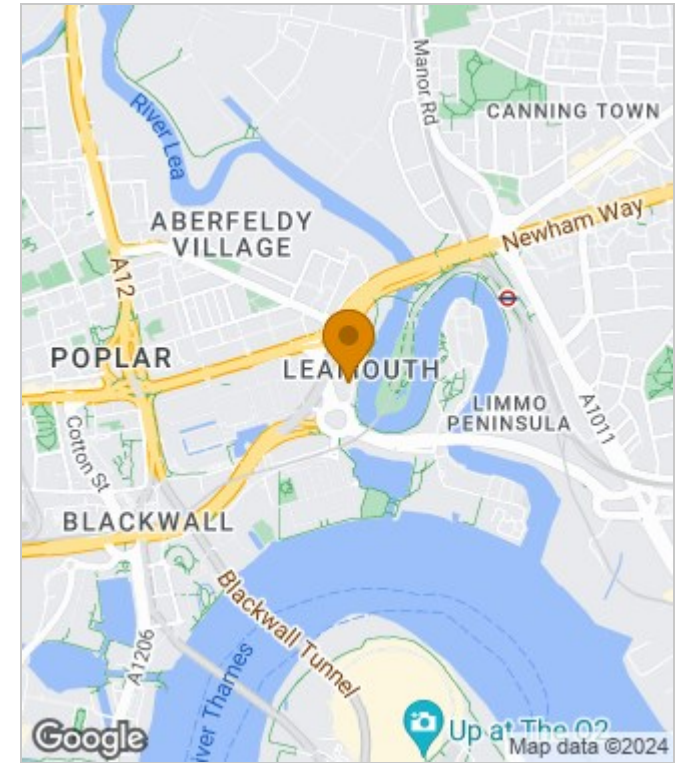


Ref :

Copyright **BLEU PLAN**

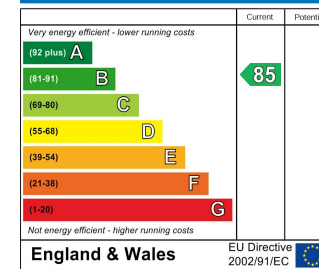
The Floor plan is not to scale and measurements and areas shown are approximate and therefore should be used for illustrative purposes only. The plan has been prepared in accordance with the RICS code of Measuring Practice and whilst we have confidence in the information produced it must not be relied on. Maximum lengths and widths are represented on the floor plan. If there is any aspect of particular importance, you should carry out or commission your own inspection of the property.
Copyright @ BLEUPLAN

Area Map

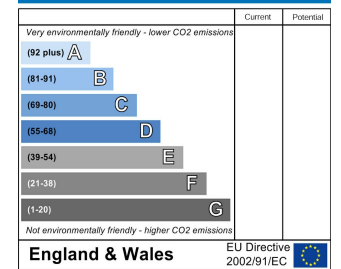


Energy Performance Graph

Energy Efficiency Rating



Environmental Impact (CO₂) Rating



These particulars, whilst believed to be accurate are set out as a general outline only for guidance and do not constitute any part of an offer or contract. Intending purchasers should not rely on them as statements of representation of fact, but must satisfy themselves by inspection or otherwise as to their accuracy. No person in this firm's employment has the authority to make or give any representation or warranty in respect of the property.

3 Shortlands, Hammersmith, London, W6 8DA

Tel: 020 8124 1073 Email: management@lessel.co.uk <https://www.lessel.co.uk>