



LESSEL



607 Catalina House Canter Way, London, E1 8QE

£640 Per Week



607 Catalina House Canter Way, London, E1 8QE

£640 Per Week

Welcome to Catalina House in the heart of Goodman's Field, London! This stunning apartment offers a perfect blend of comfort and style, ideal for those seeking a modern urban lifestyle.

Step into the spacious reception room, a versatile space that can be transformed to suit your needs, whether it be a cosy living area or a chic home office. The bedroom is a peaceful retreat, providing a restful sanctuary after a long day in the bustling city.

The bathroom is elegantly designed, offering a touch of luxury with its modern fixtures and fittings. With a total of 551 sq ft of living space, this apartment is both practical and inviting, perfect for individuals or couples looking for a contemporary city dwelling.

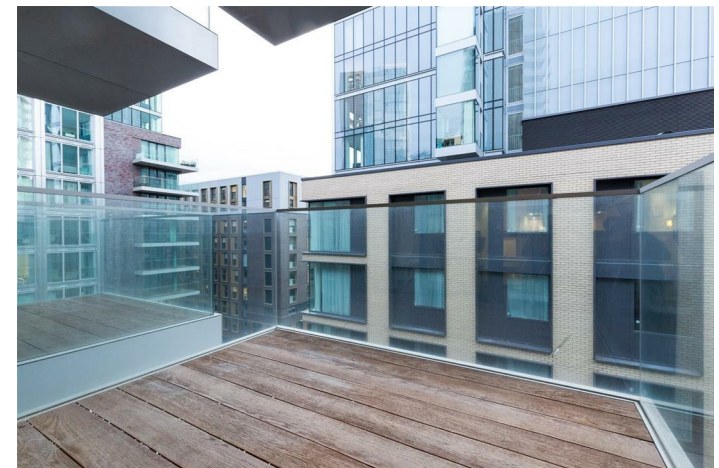
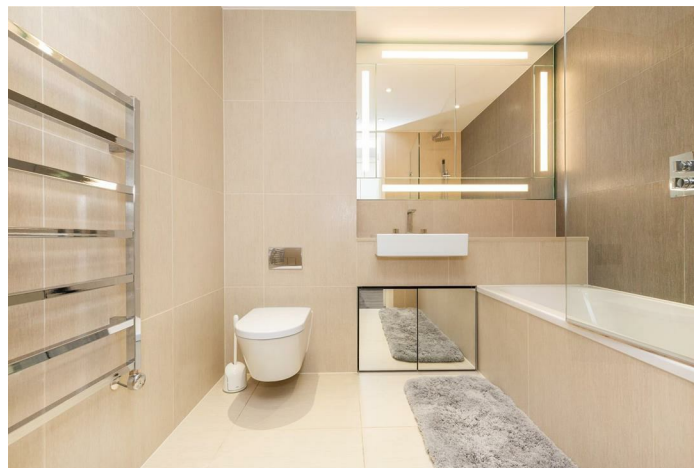
Located in the vibrant Goodman's Field area, residents can enjoy the convenience of city living with an array of amenities right at their doorstep. From trendy cafes to stylish boutiques, everything you need is just a stone's throw away.

Don't miss out on the opportunity to make Catalina House your new home. Book a viewing today and experience the charm and sophistication of this beautiful apartment for yourself.

Description

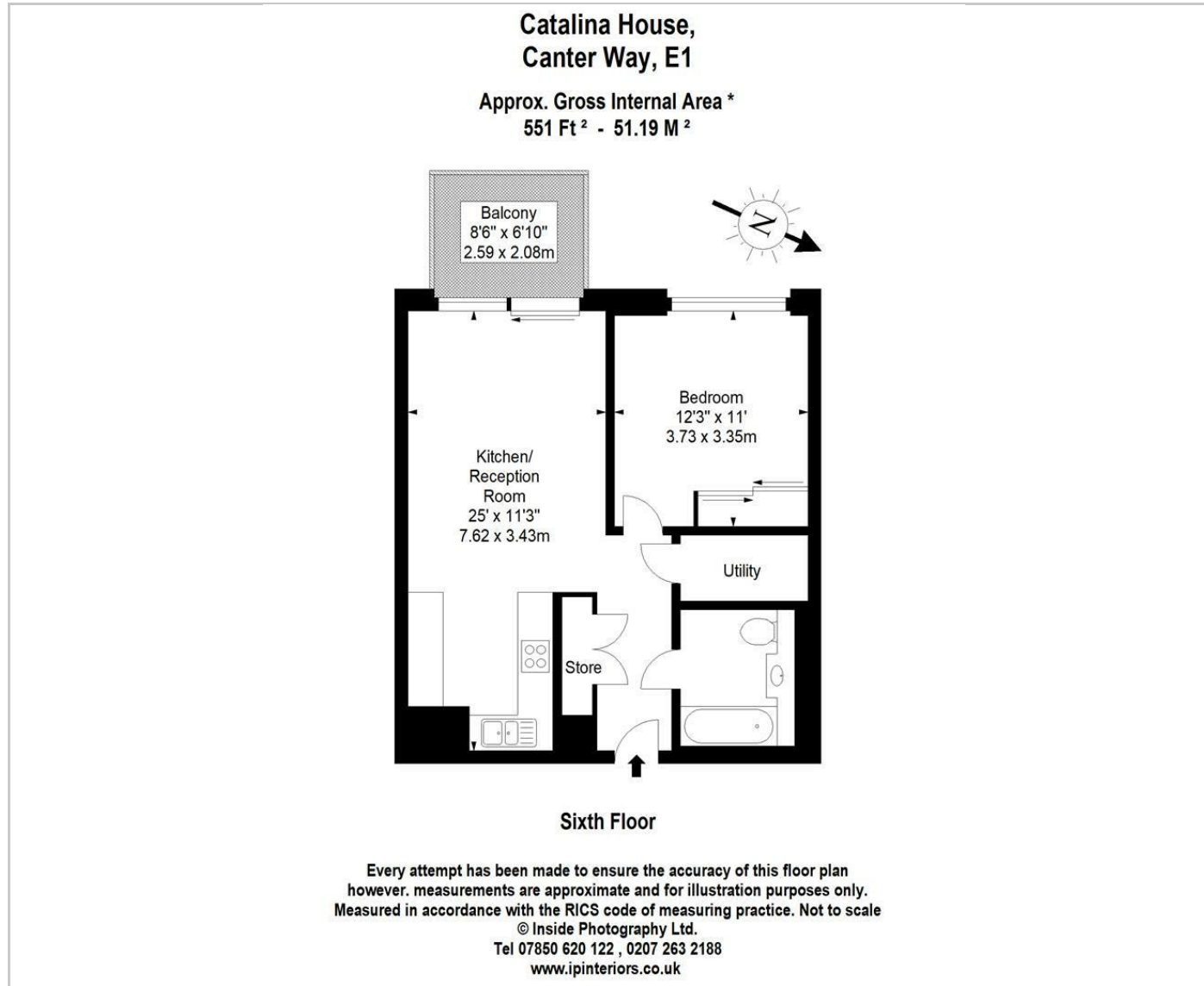


Situation

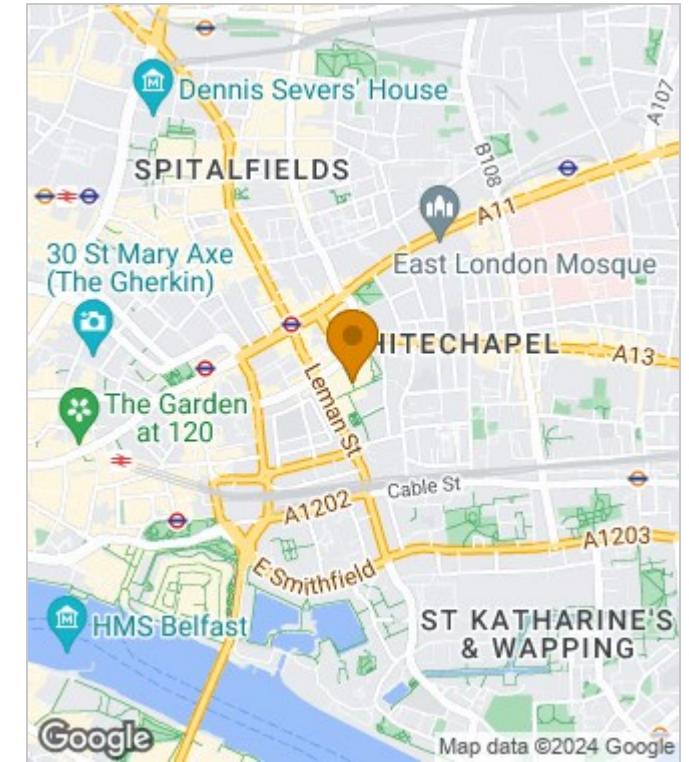


Furnished
Council Tax Band:
Available: 2nd July 2024

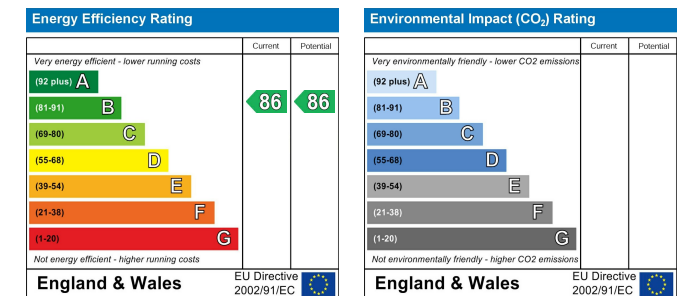
Floor Plans



Area Map



Energy Performance Graph



These particulars, whilst believed to be accurate are set out as a general outline only for guidance and do not constitute any part of an offer or contract. Intending purchasers should not rely on them as statements of representation of fact, but must satisfy themselves by inspection or otherwise as to their accuracy. No person in this firm's employment has the authority to make or give any representation or warranty in respect of the property.