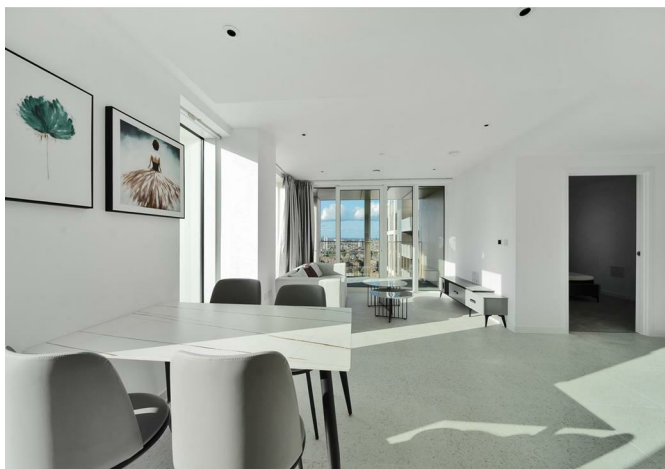
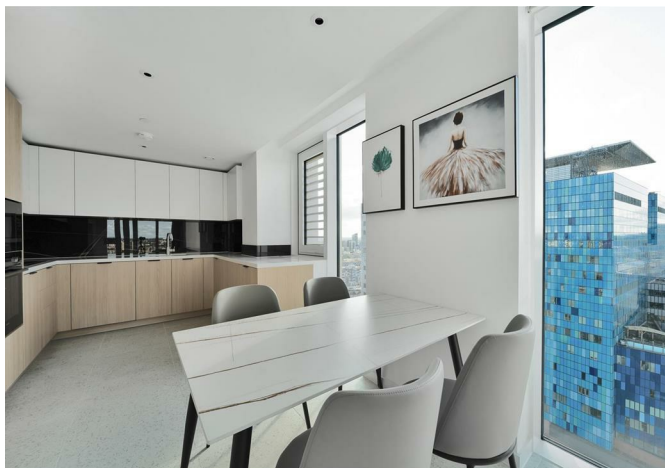




Apartment 1901 Bouchon Point 7 Cendal Crescent, London, E1 2FU

£795 Per Week



Apartment 1901 Bouchon Point 7 Cendal Crescent, London, E1 2FU

£795 Per Week

Welcome to this charming apartment located in the prestigious Bouchon Point area at 7 Cendal Crescent, London. This property boasts a delightful setting with 1 reception room, 2 bedrooms, and 2 bathrooms, making it an ideal space for comfortable living.

The apartment is thoughtfully designed to offer a perfect balance of style and functionality. The reception room provides a warm and inviting space to relax or entertain guests, while the 2 bedrooms offer a peaceful retreat for a good night's sleep. With 2 bathrooms, convenience is at your fingertips, ensuring a hassle-free morning routine for all residents.

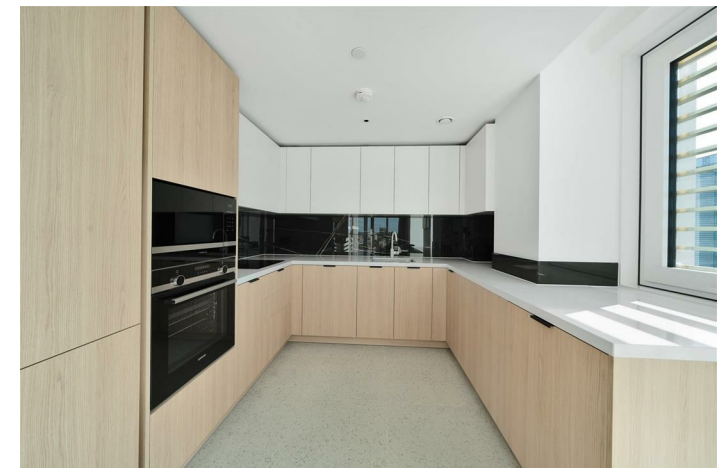
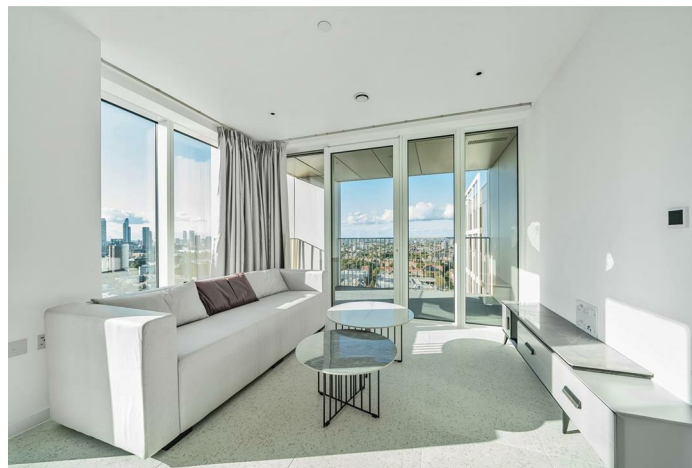
Situated in the heart of London, this apartment is surrounded by a wealth of amenities, including shops, restaurants, and parks, providing a vibrant lifestyle for its residents. The location also offers excellent transport links, making it easy to explore the city and beyond.

Don't miss the opportunity to make this apartment your new home. Embrace the comfort and convenience it offers in one of London's most sought-after neighbourhoods. Contact us today to arrange a viewing and take the first step towards living in this wonderful property at Bouchon Point.

Description



Situation

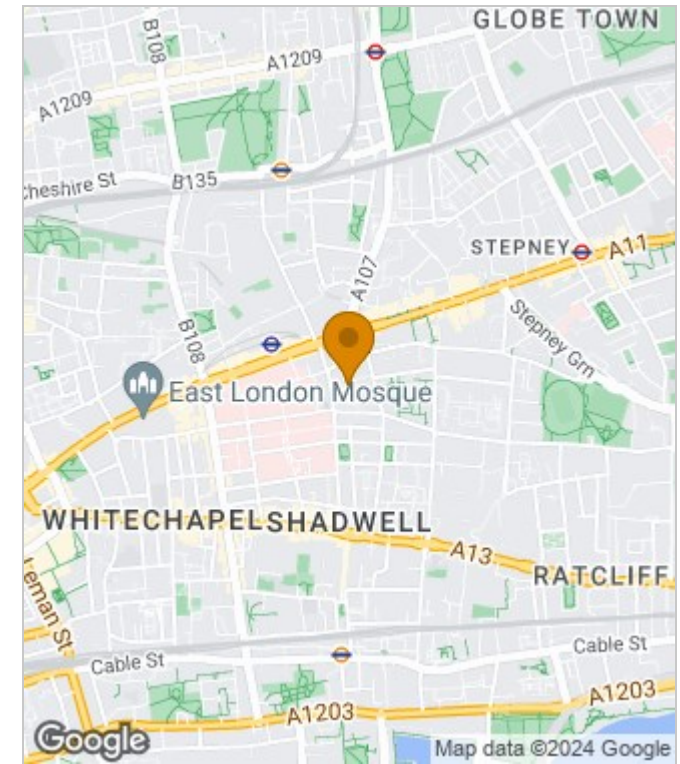


Furnished
Council Tax Band:
Available: 20th June 2024

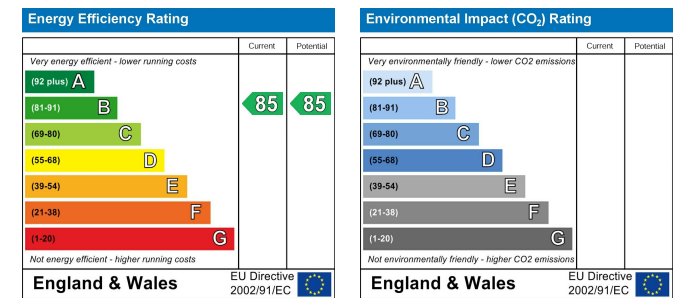
Floor Plans



Area Map



Energy Performance Graph



These particulars, whilst believed to be accurate are set out as a general outline only for guidance and do not constitute any part of an offer or contract. Intending purchasers should not rely on them as statements of representation of fact, but must satisfy themselves by inspection or otherwise as to their accuracy. No person in this firm's employment has the authority to make or give any representation or warranty in respect of the property.