



Flat 304 2 Triptych Place, London, SE1 9RD  
**£700 Per Week**



## Flat 304 2 Triptych Place, London, SE1 9RD

**£700 Per Week**

Triptych is a new mixed-use luxury development designed by renowned London architects Squire & Partners on the Southbank of London. Undulating curves of the façade present a fresh and distinct contrast to the homogeneous silhouette of symmetric towers marking London's skyline. The residences consist of two towers, 14 and 18 stories respectively, with all 169 open-plan, light-filled apartments uniquely benefit from private terraces with stunning views.

This property is a spacious one-bedroom flat located in the Eastern Building. It benefits from a spacious lounge, a modern open plan kitchen, one bedroom with fitted wardrobe, a bathroom and a balcony. Further benefits include underfloor heating, fob entry and a lift.

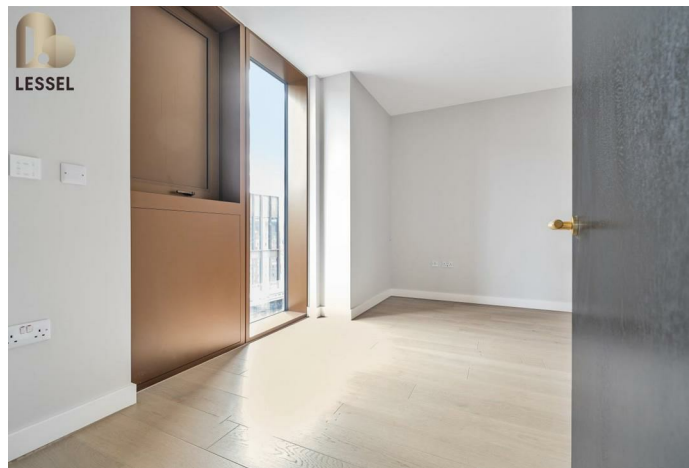
The location of the property is perfect for either working and studying in the City of London or enjoying London's artistic, cultural and social scene. The iconic Tate Modern and Shakespeare's Globe theatre are on your doorstep, while Somerset House and St Paul's Cathedral are just across the water, along with numerous galleries in the surrounding vicinity. Walk the scenic route into the City of London via the famous Millennium Bridge, or enjoy a leisurely riverside stroll along the Southbank. Alternatively, a number of key transport hubs (London Bridge, Blackfriars and Borough Station being the nearest) are within easy walking distance and offer seamless connectivity via bus, London Underground or National Rail.

Residents enjoy exclusive access to private amenities such as 24-hour Concierge, private Lounge, Workspace facilities, a Games room, and a private Cinema. These are complemented by a new externally operated bouldering facility.

## Description



## Situation

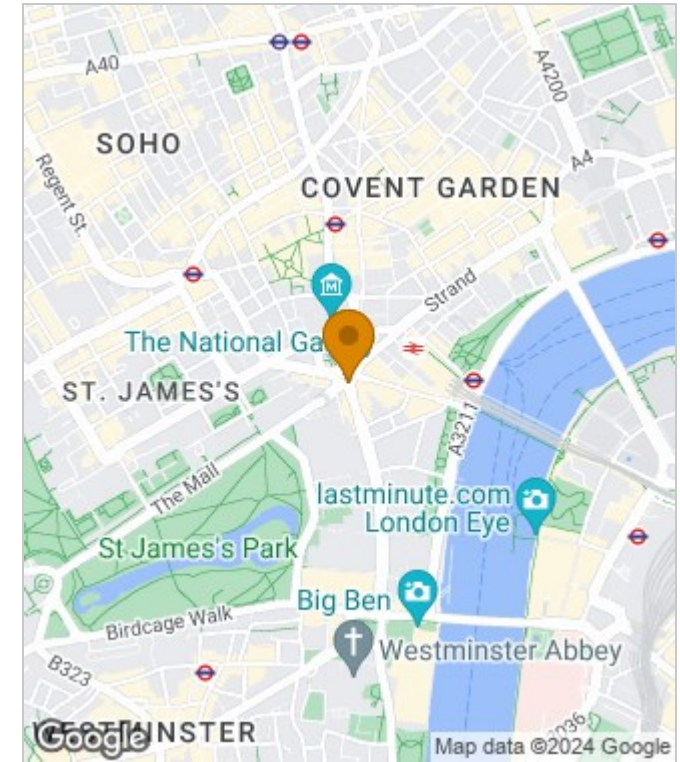


Furnished  
Council Tax Band:  
Available: 1st February 2024

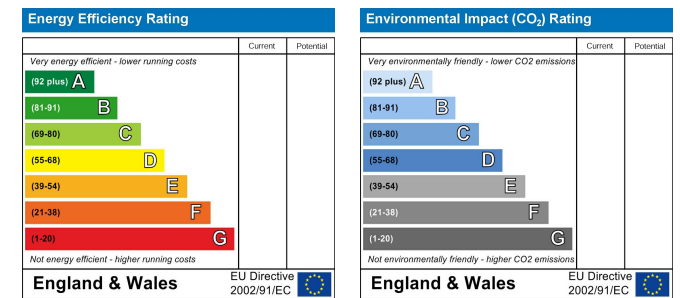
## Floor Plans



## Area Map



## Energy Performance Graph



These particulars, whilst believed to be accurate are set out as a general outline only for guidance and do not constitute any part of an offer or contract. Intending purchasers should not rely on them as statements of representation of fact, but must satisfy themselves by inspection or otherwise as to their accuracy. No person in this firm's employment has the authority to make or give any representation or warranty in respect of the property.